

# Human Services Planning Board of York Region

Town of Newmarket

June 23, 2014

**Presenter:** Adelina Urbanski, Commissioner  
York Region, Community & Health Services

## HSPB Overview

Who we are

Our mandate,  
vision, mission  
and values

Our approach



# Human Services Planning Board – York Region

“We at IBM live and work in York Region. Our new professionals that are joining us have a real struggle finding rental housing in York Region. Often having to live in the city and commute north” Pat Horgan, IBM

“ I’m a young professional that has just recently changed careers...Moved back to York Region and...I’m finding it difficult to find affordable housing.”

Kieran, Nurse

“On average, housing rental here in Newmarket for a 1 bedroom is: \$12-13 hundred, and that’s not including Hydro. I make between \$13-14 hundred a month ...I wonder where that leaves me to live if the rent is way beyond my Means” Terry , York Region Resident

“When it comes to having affordable housing, all Canadians deserve that right. It should not just be a luxury”

Carson Arthur - HGTV



.....

The **Reality**  
of the **Rental**  
and  
**Ownership**  
**Market** in  
*York Region*

.....

**York Region has the lowest proportion of Rental  
housing in the GTA**

York Region

**11.5%** 

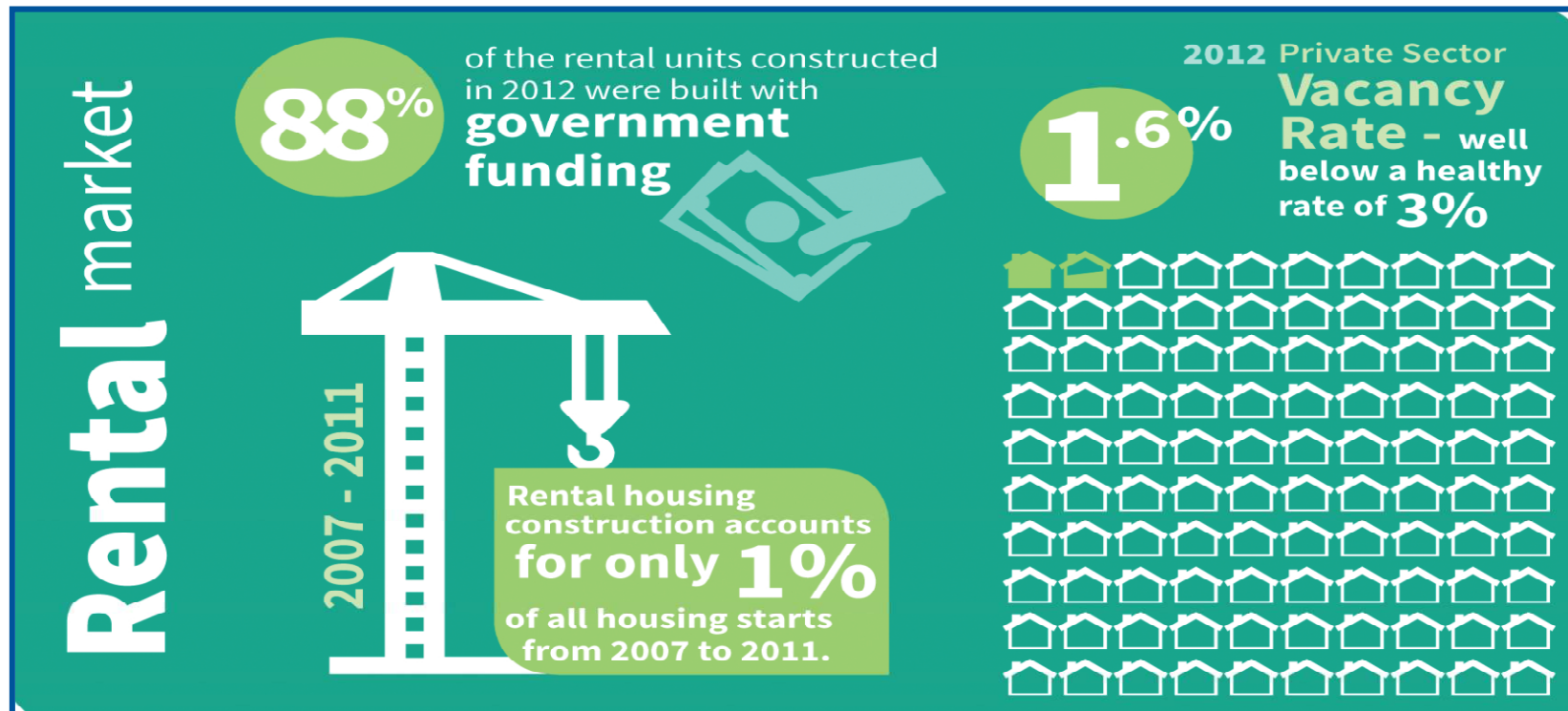
Province of Ontario

**28.4%** 

Canada

**30.6%** 

# Lack of Rental Options in York Region



## **“Make Rental Happen” Advocacy Plan**

**The Plan has three deliverables:**

- **Compelling York Region Rental Housing Story**
- **Collective Statement of Commitments**
- **Strategic Alliances**

**Who can implement change?**

- **All levels of Government**
- **The Building Industry**
- **Corporate Leaders**

## **Creating the Conditions to Build Private Market Rental Housing**

# **Make Rental Happen**



## Raising Awareness and Building Understanding

# HOW?



**Make Rental Happen  
Student Challenge**

**The Housing Symposium**

**[www.york.ca/makerentalthappen](http://www.york.ca/makerentalthappen)**

**#MakeRentalHappen**



# Fair Access Partnership

Improved Quality of Life

+

Healthy Community

=

Fair Access ROI

## The Decisions Made

- The Working Group

### The Collaborative Approach

- The Partners
- Neighbourhood Approach
- Planning Together
- Accessible & Affordable

## The MOU

- A Comprehensive Milestone

- The Program Concept
- The Selection Criteria
- 4 finalized school sites:

1. RL Graham PS (Prince of Peace, Our Lady of the Lake), Georgina
2. Alexander Muir PS (Canadian Martyrs), Newmarket
3. St. Benedict CES (Aldergrove), Markham
4. St. Charles Garnier CES (Roselawn), Richmond Hill





# The Collaborative Approach

## The Collaborative Approach

- **The Partners**
- **Neighbourhood Approach**
- **Planning Together**
- **Accessible & Affordable**

## Decisions Made

- **Established the Working Group**

# Decisions Made

- **The Program Concept**
- **The School Selection Criteria**
- **4 finalized school sites:**
  - RL Graham PS (Prince of Peace, Our Lady of the Lake), Georgina
  - Alexander Muir PS (Canadian Martyrs), Newmarket
  - St. Benedict CES (Aldergrove), Markham
  - St. Charles Garnier CES (Roselawn), Richmond Hill

# Decisions Made

## *A draft Memorandum of Understanding*

- **Comprehensive Milestone**

# The Return on Investment

**Improved Quality of life**

**+**

**Healthy Community**

**=**

**Fair Access ROI**

## The ASK

### Make Rental Happen

- Endorse the plan
- Contribute to the process
- Share the rental housing story

### Fair Access

- Continue to support Fair Access Partnership
- Build the program into your future planning