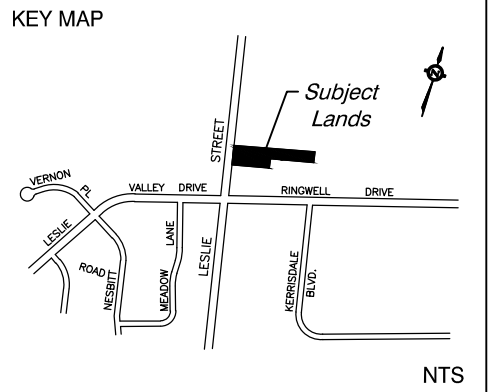


LESLIE STREET  
 ROAD ALLOWANCE BETWEEN CONCESSIONS 2 AND 3



Subject Lands - 2976 m<sup>2</sup>

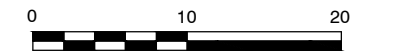
Required Parking

Accessory Office	4
Motor Vehicle Service Shop	20
<b>Total Parking</b>	<b>24</b>

Loading Space 1

Graveled Area - Motor Vehicle and Leisure Vehicle Storage Area

SCALE (m):



**PROPOSED DEVELOPMENT PLAN**  
Jason Hyatt

18095 & 18099 Leslie Street  
 Part of Lot 4  
 Concession 3  
 Town of Newmarket  
 Regional Municipality of York

Scale:	Approved By:	Drawn by:
Jan 29, 2017	MRES	VT
PLANNING CONSULTANTS DEVELOPMENT COORDINATORS LTD.		Drawing Number: 1124-00
REVISIONS: Apr 15, 2017		



PLAN 65M-2730