

York Region Rapid Transit Corporation



Davis Drive and Yonge Street Updates
Town of Newmarket, Committee of the Whole
April 28, 2014

vivanext
be moved

1. Opening/Introduction
2. Project update
3. Summary of 2014 milestones
4. Business Support
5. Yonge Street
6. Information sharing



- › Newmarket-Tay Power – 95% complete
 - › New pole installation, framing, stringing, old pole removals
- › Enbridge – 95% complete
- › Telecommunications – 55% complete
- › Utility relocation work will be complete by late 2014



construction status: retaining walls

- › 15 retaining walls constructed
 - › Coping and handrail installation underway
- › The last wall, on the southeast corner at Davis and Yonge, will be completed this summer



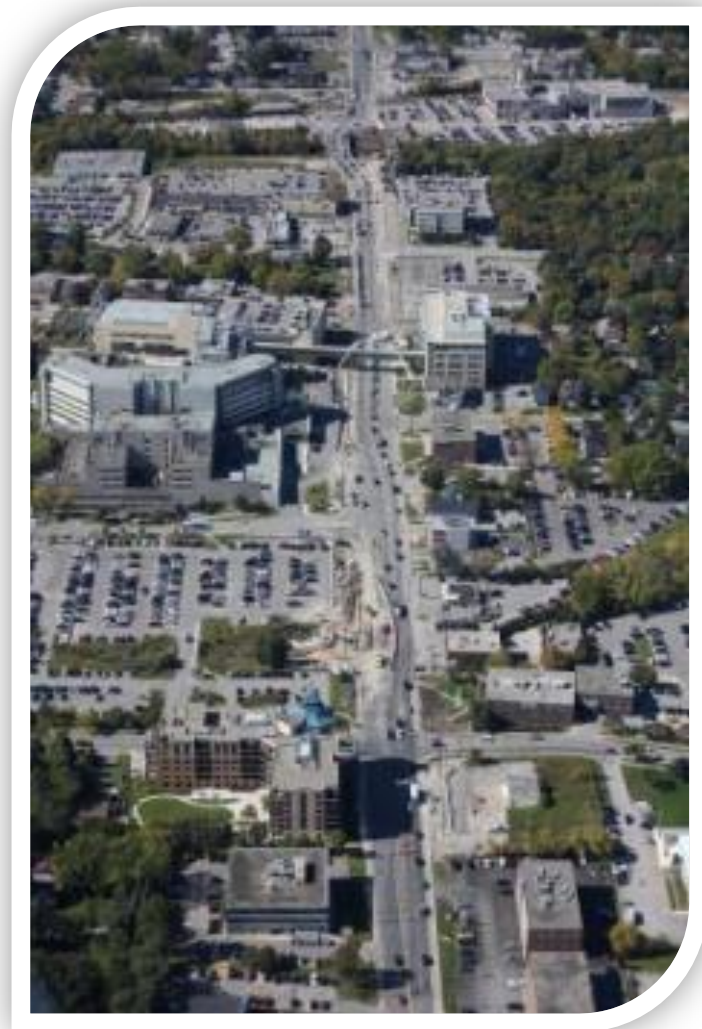
- › Keith Bridge
 - › Bridge construction scheduled for completion November 2014
 - › Number of traffic lanes will be dependent on the staging of other work in the vicinity of the bridge
 - › Tom Taylor Trail will re-open by the end of the year
- › Union Hotel
 - › Remobilizing this spring, construction of the new foundations will begin
 - › Move to permanent location scheduled for this summer



- › Eastern Creek
 - › Culvert construction completed
 - › Number of travel lanes will be dependent on traffic staging through the area
- › Western Creek
 - › South side widening will begin in July, completion scheduled for this fall
 - › North side completed



- › Road widening
 - › This year the following segments will be widened from:
 - › Yonge to Vincent on the north side
 - › Keith Bridge to Bolton on the north side
 - › Bolton to Roxborough on the south side
- › Base-layer paving
 - › Will follow road widening
- › Traffic staging
 - › There will continue to be one travel lane in each direction with a dedicated left turn lane [where possible] from Yonge to Roxborough for the remainder of the year



construction status: road work

› Boulevards

- › Planters with interlocking paving stones and concrete sidewalks will be installed in segments this year
- › A full boulevard will be constructed on the south side of Davis east of Parkside



construction status: vivastations

- › The canopies are coming!
 - › The first two canopies will be constructed at Longford and Davis on the eastbound and westbound platforms this year
 - › Construction of three other canopies will start later this year, including in front of the hospital
 - › Construction of the final canopy will start next year
 - › There will be three centre-lane vivastations [6 canopies]



minimizing disruption is a top priority



summary of 2014 milestones

- › A number of achievements will be reached this year:
 - › Utility completion
 - › Road widening
 - › Union Hotel move to permanent location
 - › Vivastation construction started and delivery of first canopy steel structure
 - › Keith Bridge completion
 - › Boulevards in sections
- › Completion of these milestones will be communicated using a variety of tactics



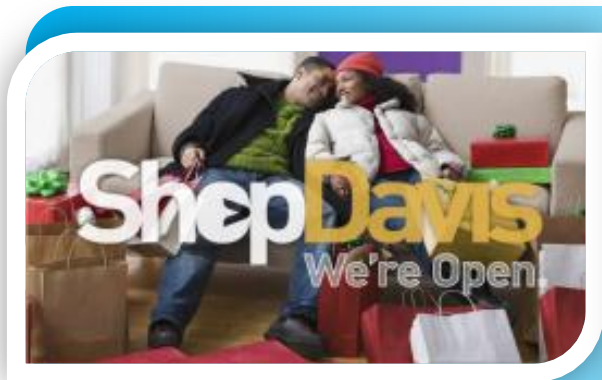
business support program

- › ShopDavis – Business Support Program
 - › Partner with the Newmarket Chamber of Commerce to help support businesses during construction
- › Campaigns include:
 - › Newspaper, radio, digital ads;
 - › On-street billboards;
 - › Community engagement;
 - › Social media posts;
 - › Website posts and online business profiles; and
 - › Education programs offered through the Chamber

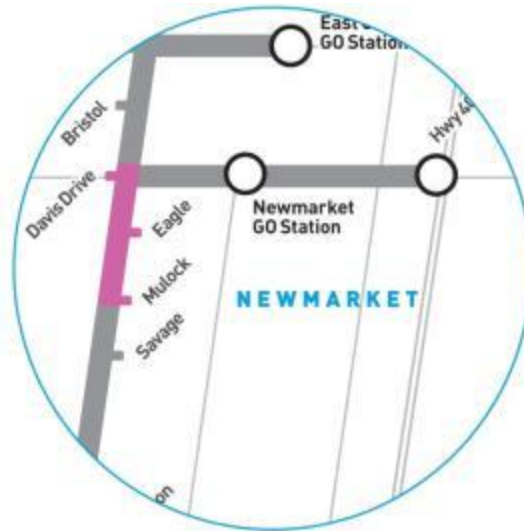
ShopDavis

Shop7

ShopYonge



yonge street bundle (Y2.1, Y2.2, Y3.2)



Y3.2

- › Mullock to Davis Dr
- › 2.4 km
- › 3 stations

Y2.2

- › Levendale Rd to 19th Ave
- › 2.9 km
- › 3 Stations



Y2.1

- › Hwy 7 to Major Mackenzie
- › 3.6 km
- › 4 stations



yonge street project update

- › Design Build Contract awarded
- › Next steps: work plans, schedule development and design work
- › Preliminary construction activities expected to begin later this year in Newmarket
- › Land acquisition completed in Newmarket, possession secured March 2014
- › Substantial completion by the end of 2018



information sharing

VIVAnext



Michelle Dudzik
Davis Drive Community Liaison



Leslie Pawlowski
Yonge Street Community Liaison

partnering with communities to manage growth

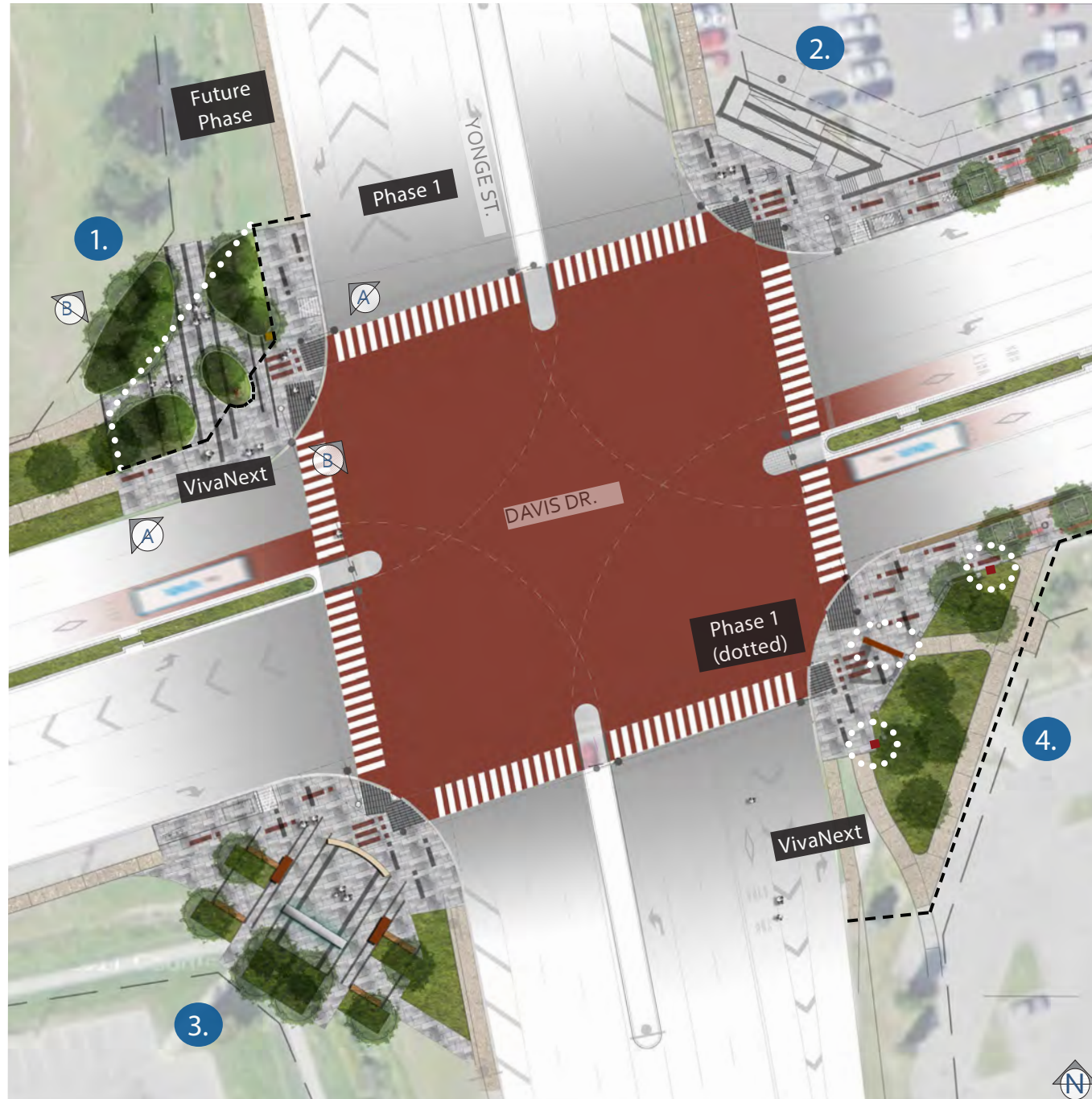
VIVAnext



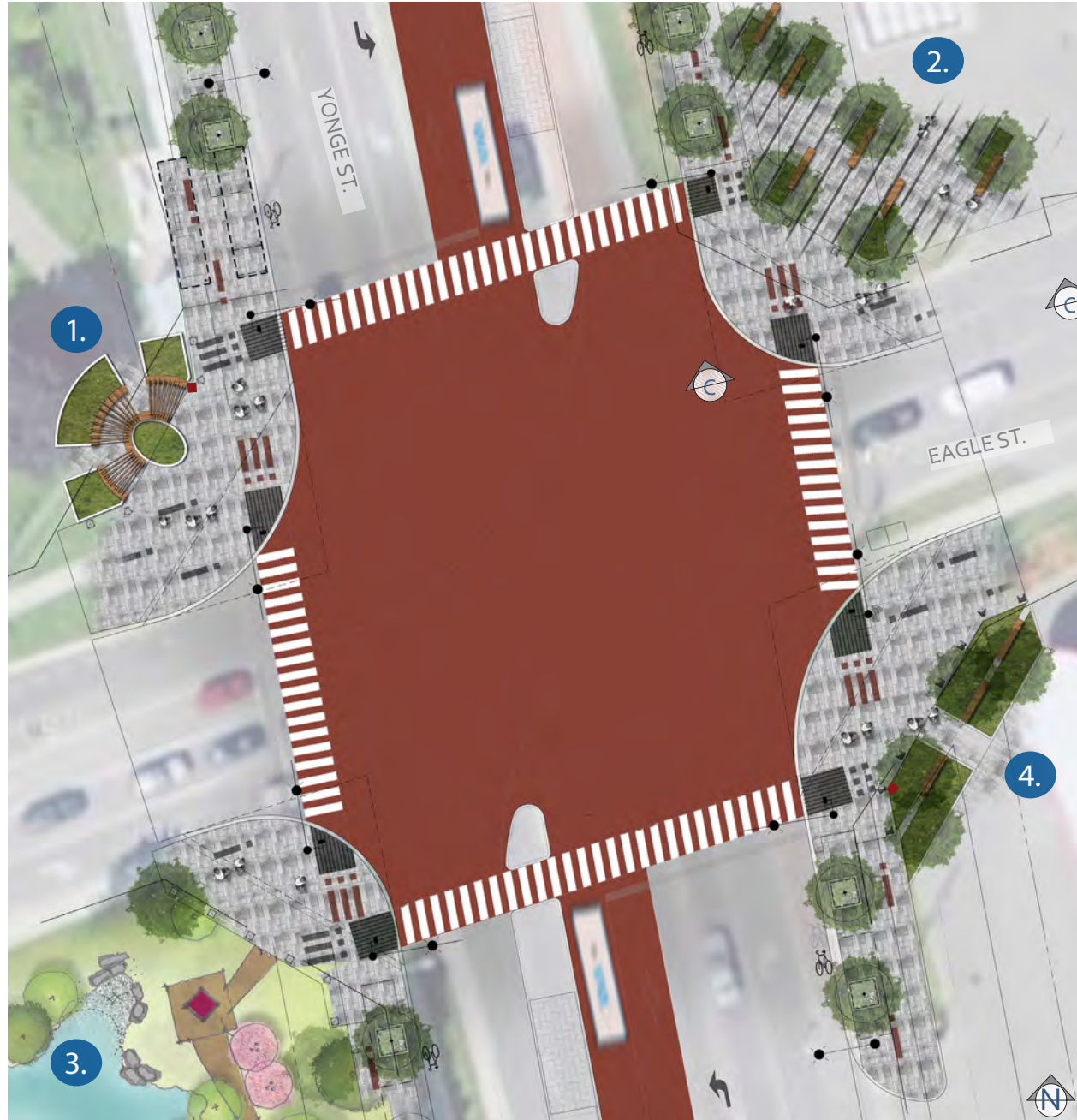
VIVAVIVAVIVAVIVAVIVAVIVAVIVAVIVAVIV

Thank you

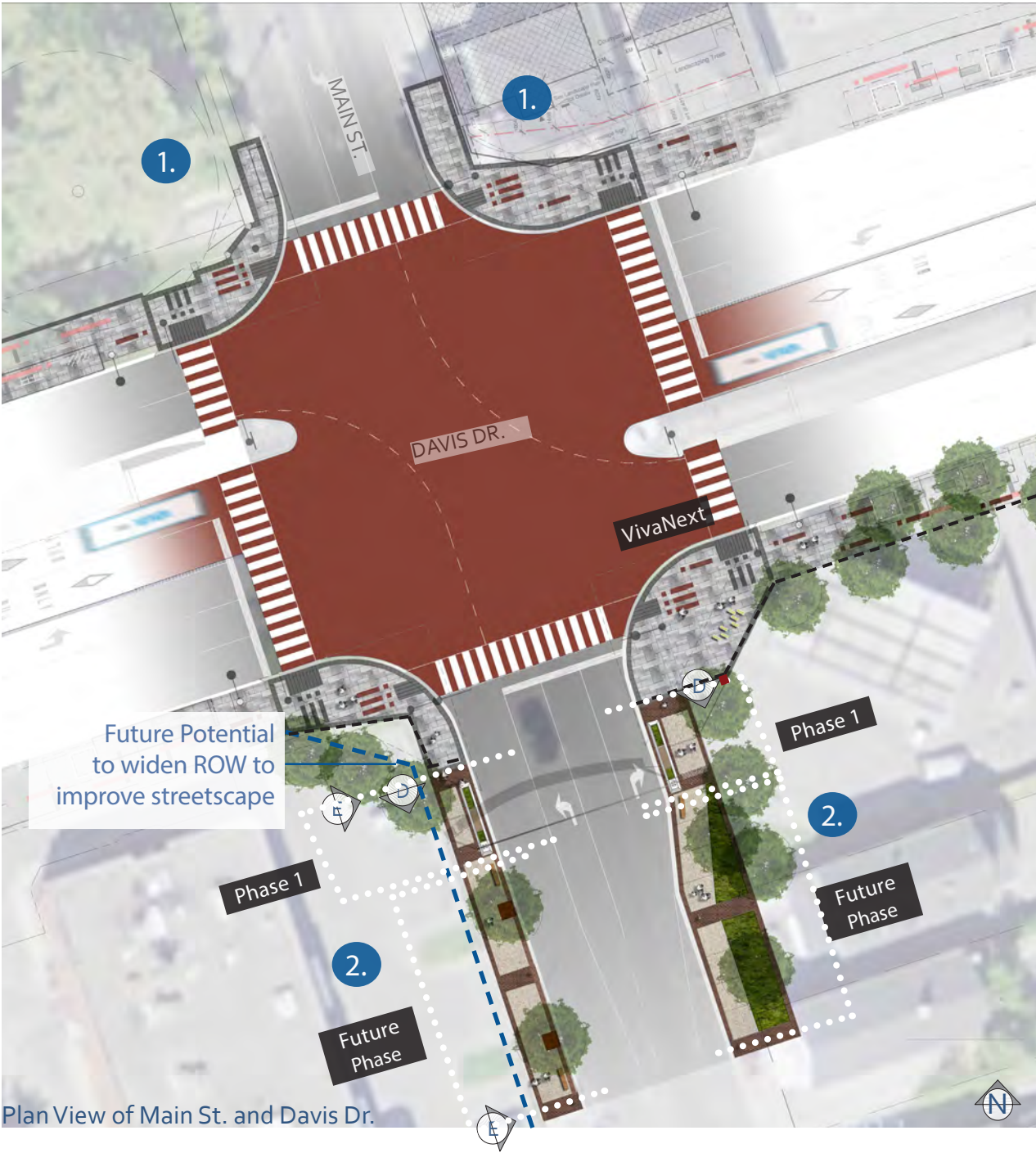
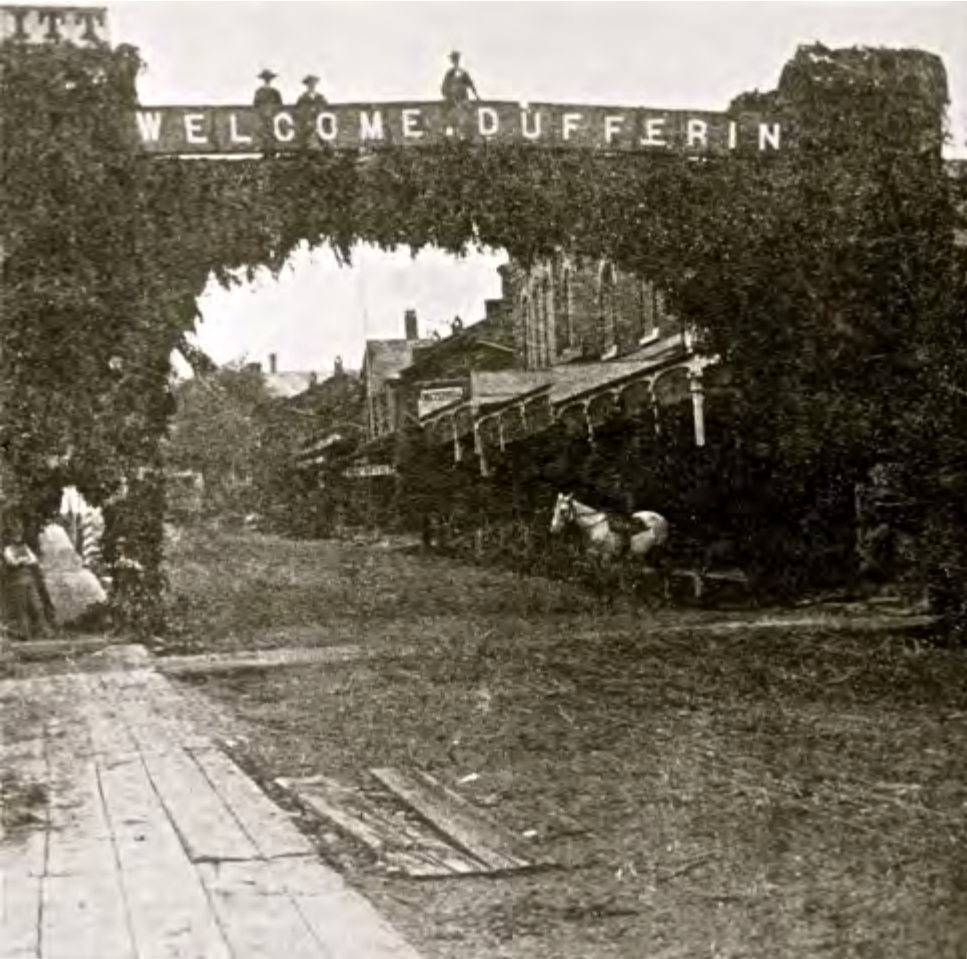




Plan View of Yonge St. and Davis Dr.



Plan view of Yonge St. and Eagle St.



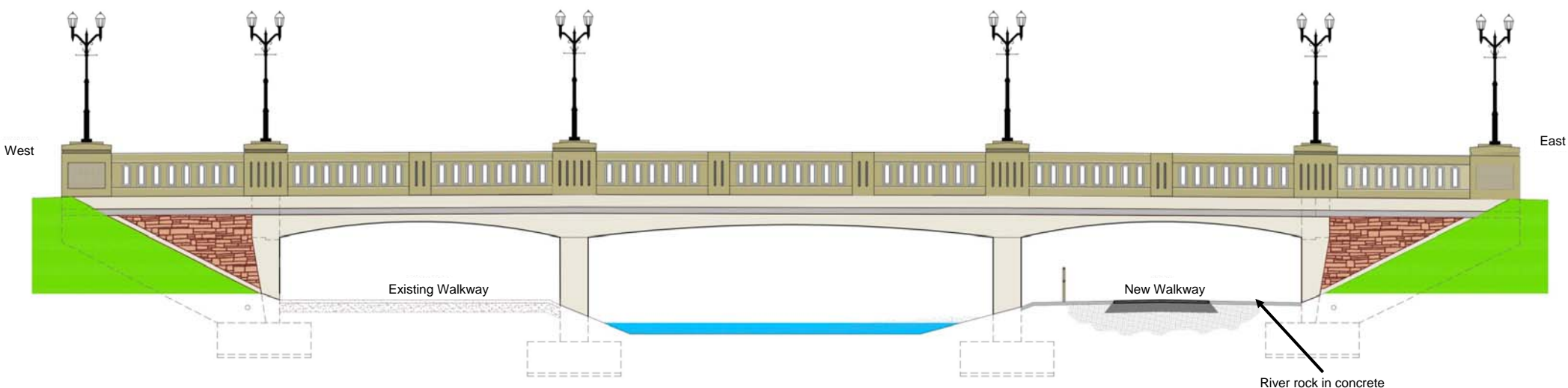


Elevation D - Southwest and Southeast Corner of Main St.



Perspective looking south along Main Street towards the future Urban Park

Cross Section under Keith Bridge



South Elevation