

Welcome...



# **Accessible Parking Signs and Parking Space On Main Street**

## **Agenda**

- 1. Improved Sideload Sign Request**
- 2. AODA Requirements**
- 3. Additional Accessible Parking Space on Main Street**
- 4. Questions**

# Sideloadable Van Sign

Existing



Proposed Improvement



## Issues:

1. Not a Regulatory Sign – Information Only (Enforceability)
2. Cost – larger and 2-tone colour

## Benefits:

1. Larger sign with more descriptive language
2. Iconology

## Action:

The Town should be able to support the sign upgrade with the approval of the Committee. This is an operational change and would not need to go to Council.

## Before we talk about new Accessible Parking on Main Street:

### Parking Contents within the AODA:

#### **Application, off-street parking**

**80.32** Obligated organizations shall ensure that when constructing new or redeveloping off-street parking facilities that they intend to maintain, the off-street parking facilities meet the requirements set out in this Part.

#### **Types of accessible parking spaces**

**80.34** Off-street parking facilities must provide the following two types of parking spaces for the use of persons with disabilities:

1. Type A, a wider parking space which has a minimum width of 3,400 mm and signage that identifies the space as “van accessible”.
2. Type B, a standard parking space which has a minimum width of 2,400 mm.

#### **Access aisles**

**80.35** (1) Access aisles, that is the space between parking spaces that allows persons with disabilities to get in and out of their vehicles, must be provided for all parking spaces for the use of persons with disabilities in off-street parking facilities. O. Reg. 413/12, s. 6.

(2) Access aisles may be shared by two parking spaces for the use of persons with disabilities in an off-street parking facility and must meet the following requirements:

1. They must have a minimum width of 1,500 mm.
2. They must extend the full length of the parking space.
3. They must be marked with high tonal contrast diagonal lines, which discourages parking in them, where the surface is asphalt, concrete or some other hard surface.

#### **On-street parking spaces**

**80.39** (1) When constructing or redeveloping existing on-street parking spaces, designated public sector organizations shall consult on the need, location and design of accessible on-street parking spaces and shall do so in the following manner:

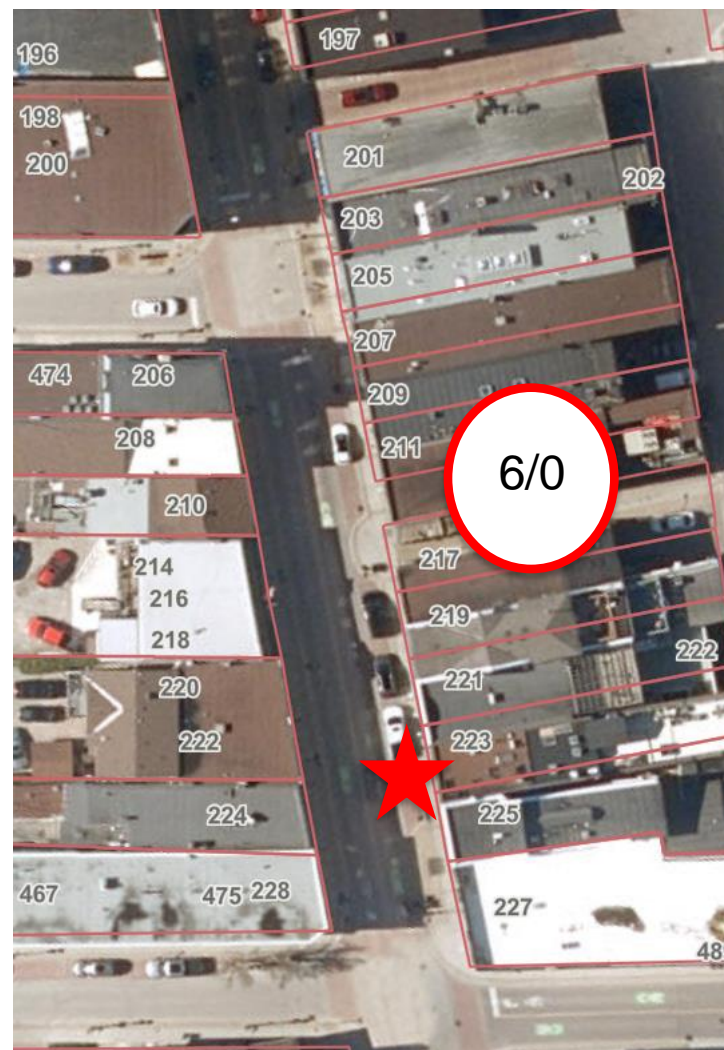
1. Designated public sector organizations must consult with the public and persons with disabilities.
2. Municipalities must also consult with their municipal accessibility advisory committees, where one has been established in accordance with subsection 29 (1) or (2) of the Act.

Timothy Street



Water Street

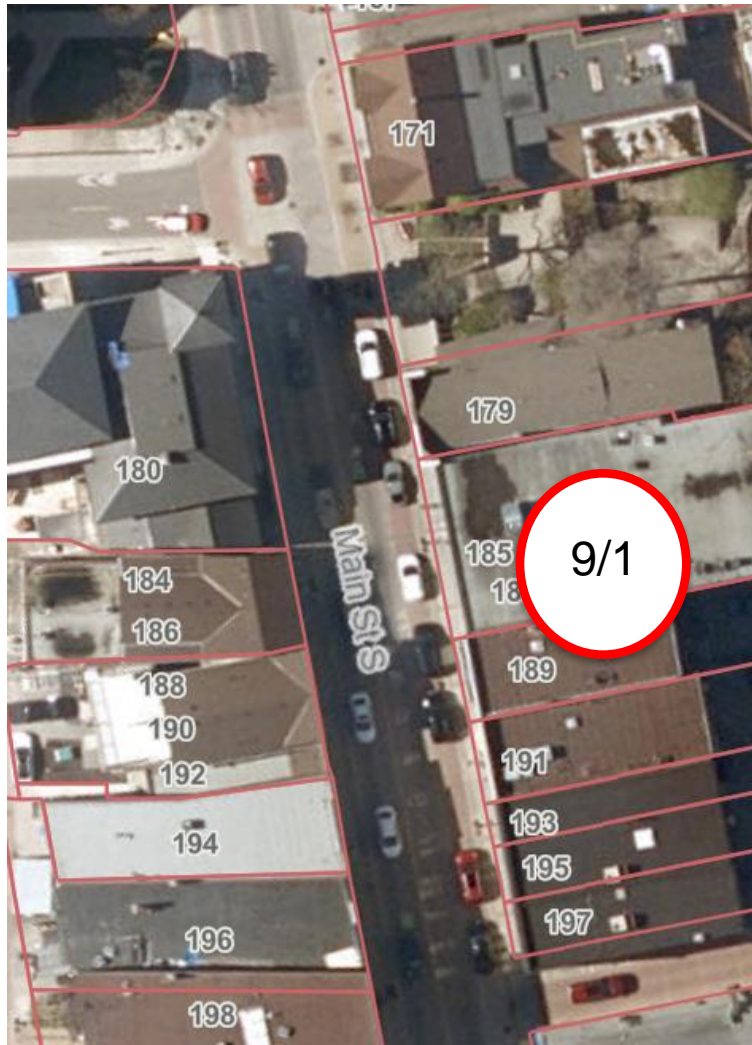
Laneway



Timothy Street

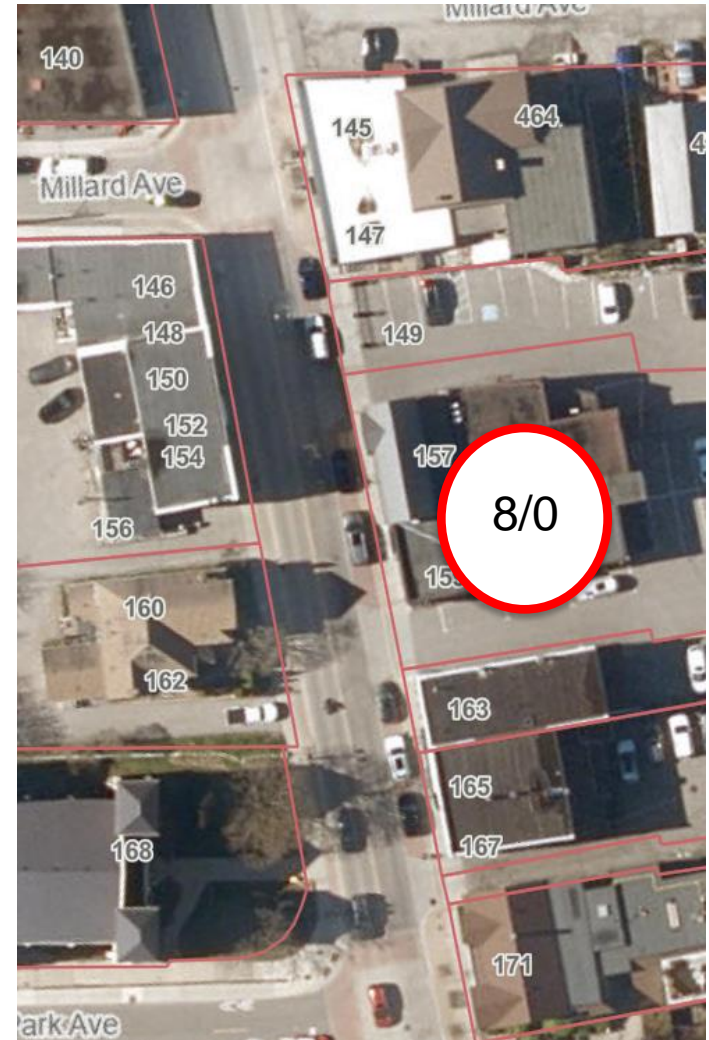


Park Avenue



Laneway

Millard Avenue



Park Avenue

## Assessment:

1. Similar amount of Accessible parking to other sections of Main Street.
2. Due to space limitations, the space would need to be a Type B parking space (smaller space).
3. Since this is an on-street parking space, section 80.39 of the AODA would apply:
  - a. Consult with BIA
  - b. Consult with the Ward Councillor
  - c. Seek Council approval
4. Note that the parking space (like others on Main Street) will not be considered fully accessible due to the street curbs.

# Questions?