

February 26, 2014

**DEVELOPMENT & INFRASTRUCTURE SERVICES REPORT  
ENGINEERING SERVICES 2014-20**

TO: Committee of the Whole

SUBJECT: Main Street – On-street Accessible Parking Spaces  
File No.: T08 T.30 Main Street

ORIGIN: Director, Engineering Services

---

**RECOMMENDATIONS**

**THAT Development & infrastructure Services Report – ES 2014-20, dated February 26, 2014 regarding Main Street – On-street Accessible Parking Spaces, be received and the following recommendation(s) be adopted:**

- 1. THAT accessible parking spaces on Main Street be approved at the following on-street locations:**
  - a. 127 Main Street**
  - b. 99 Main Street**
  - c. 71 Main Street**
  - d. 35 Main Street**
  - e. 48 Main Street**
  - f. 22 Main Street**
- 2. AND THAT the property owners fronting onto Main Street from Millard Avenue to Davis Drive be notified;**
- 3. AND THAT the necessary Bylaw be prepared and submitted to Council for its approval.**

**BACKGROUND**

At its regular meeting of Monday, January 21, 2013, Town Council adopted recommendations under New Business that stated:

- h) Councillor Sponga requested staff investigate the need for an accessible parking space on Main Street between Ontario Street and Davis Drive and report back by April 2013.*

Town staff decided to expand the area of review from Millard Avenue to Davis Drive. The southern part of Main Street, from Millard Avenue to Water Street, has 37 on-street parking spaces of which three (3) have been designated as accessible spaces. The northern part of Main Street from Millard Avenue to Davis Drive has 31 parking spaces with no designated accessible spaces, which is the subject of this review.



At its regular meeting of Monday April 15, 2013, Town Council adopted recommendations of Development & Infrastructure Report ES2013-18. The recommendations of that report outlined the location of the six (6) on-street accessible parking spaces and recommended soliciting comments from the Accessibility Advisory Committee and the Main Street District Business Improvement Area Board of Management (Main Street BIA).

## **COMMENTS**

The comments from both the Accessibility Advisory Committee and the Main Street BIA have been received. Both organizations are in support of the recommendations.

Therefore, it is recommended that on-street accessible parking spaces be located at:

1. 127 Main Street – the most northern parking space in the row of six parking spaces starting at the church
2. 99 Main Street – the most northern parking space in a row of two parking spaces south of Queen Street
3. 71 Main Street – the most southern parking space in a row of three parking spaces north of Queen Street
4. 35 Main Street – the most southern parking space in a row of three parking spaces north of Ontario Street
5. 48 Main Street – the most southern parking space in a row of two parking spaces north of Ontario Street
6. 22 Main Street – the most southern parking space in a row of four parking spaces north of Simcoe Street

The attached maps indicate the exact locations.

It is also recommended that the property owners fronting Main Street from Millard Avenue to Davis Drive be notified of the change and of the inclusion of on-street accessible parking spaces.

## **PUBLIC CONSULTATION**

The Accessibility Advisory Committee reviewed this issue as noted in their April 16, 2013 minutes. The Main Street District Improvement area Board of Management reviewed this issue at their November 2013 meeting, as noted in their February 18, 2014 minutes. Both groups were supportive of the proposal.

## **BUSINESS PLAN AND STRATEGIC PLAN LINKAGES**

Living Well

- Investigate and resolve bylaw complaints in a timely fashion, and promote voluntary compliance through regular dialogue with the public, thereby promoting health, education and a harmonious community.

## **IMPACT ON PUBLIC HEALTH AND SAFETY**

The proposed parking alterations may improve the community and promote safe and efficient operations on the street.

## **HUMAN RESOURCE CONSIDERATIONS**

No impact to current staffing levels.

## **IMPACT ON BUDGET**

### Operating Budget (Current and Future)

No impact to the Operating Budget.

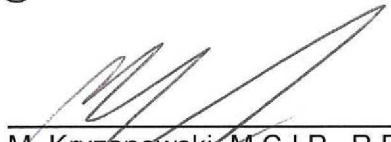
### Capital Budget


The cost of the signs and pavement marking would be in the range of \$500.00 to \$1,000.00 per location.

## **CONTACT**

For more information on this report, please contact Mark Kryzanowski at 905-895-5193 extension 2508; [mkryzanowski@newmarket.ca](mailto:mkryzanowski@newmarket.ca).

Prepared by:

  
M. Kryzanowski, M.C.I.P., R.P.P.  
Senior Transportation Coordinator

  
R. Prudhomme, M.Sc., P. Eng.  
Director, Engineering Services

  
R. Bingham, C.E.T.,  
Manager, Engineering & Technical Services

  
R. Prentice, Commissioner,  
Development & Infrastructure Services



## Millard Avenue to Queen Street



**Existing On-Street Parking Space**



**Proposed Accessible On-street Parking Space\***



**Private Accessible Parking Space**

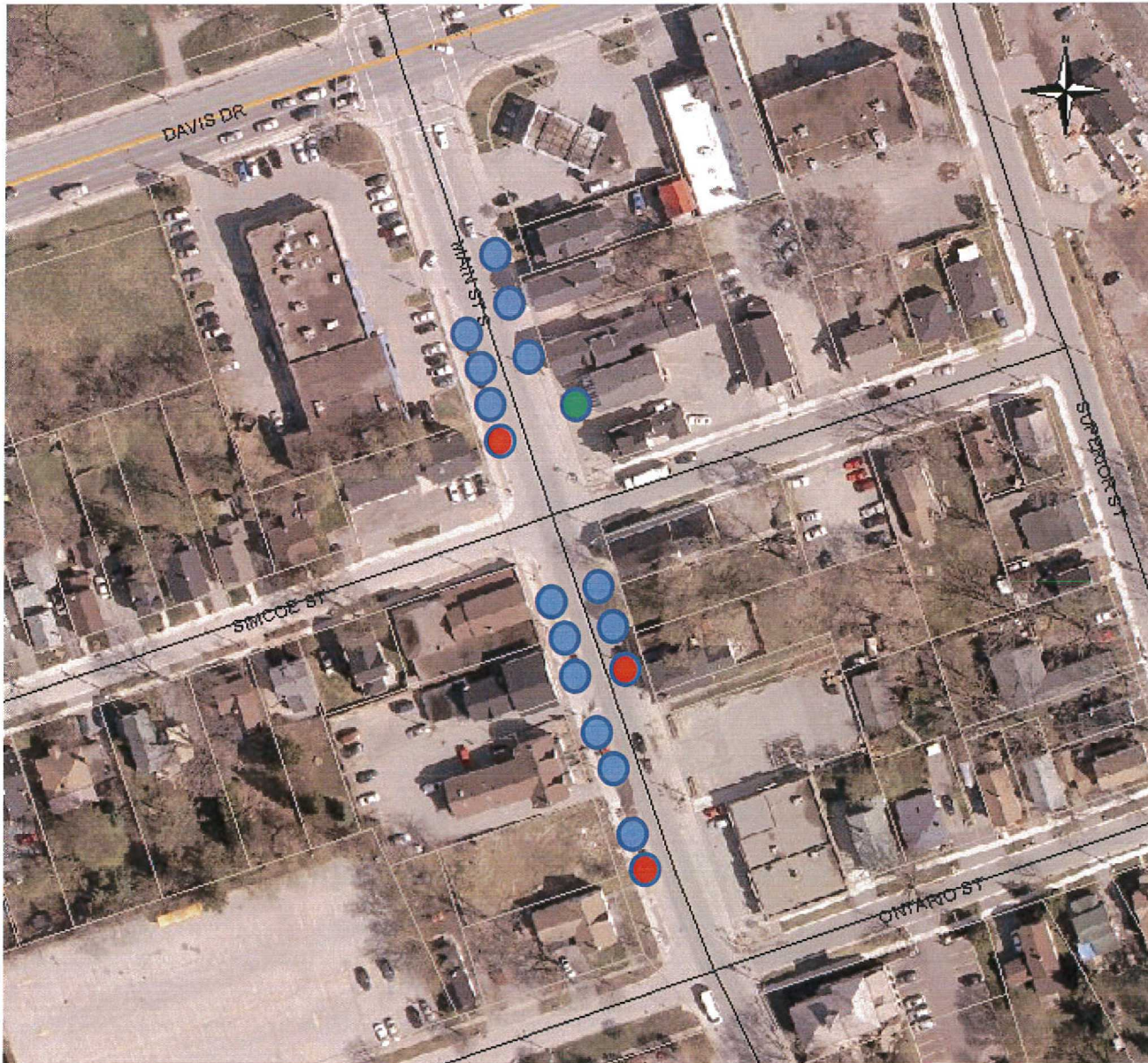
**\*These are existing parking spaces, not new parking spaces.**

## Queen Street to Ontario Street





## Ontario Street to Davis Drive



**Existing On-Street Parking Space**



**Proposed Accessible On-street Parking Space\***



**Private Accessible Parking Space**

**\*These are existing parking spaces, not new parking spaces.**