

October 4, 2016

**DEVELOPMENT & INFRASTRUCTURE SERVICES REPORT
ENGINEERING SERVICES 2016-39**

TO: Committee of the Whole
SUBJECT: Crossland Gate – Parking Review
File No.: T08 T.30 Crossland Gate
ORIGIN: Director, Engineering Services

RECOMMENDATIONS

THAT Development and Infrastructure Services Report – ES2016-39 dated October 4, 2016 entitled “Crossland Gate – Parking Review”, be received and the following recommendation be adopted:

- 1. THAT the existing parking restrictions remain as they are.**

COMMENTS

The Town received a request to review the parking conditions on Crossland Gate, just south of Alex Doner Drive. In accordance with the Town’s Corporate Parking Policy, staff reviewed the current parking situation and offered a proposal to the affected residents to provide additional parking on the south side (outer curve).

A survey was conducted in the community that would be affected. Results indicated a majority were not in support of the proposal for additional parking nor were they in favour of any changes to the existing parking restrictions. Therefore, it is recommended that the existing parking restrictions remain as they currently are.

PUBLIC CONSULTATION

On June 13, 2016, Engineering Services contacted the community on Crossland Gate south of Alex Doner Drive. Fifteen (15) households which directly front on, or flank, the proposed area of study were targeted by the mail-out. The Town received four (4) responses (27% return) within the study area, and one (1) response from outside the study area. Three households (75% of respondents) did not support any changes, and one household supported the proposal for change (25%). The single respondent residing outside the study area did not support any changes.

A copy of this report will be forwarded to the affected residents prior to the Committee of the Whole Meeting so that they may attend the meeting or present a deputation if they so wish.

BUSINESS PLAN AND STRATEGIC PLAN LINKAGES

- Well-planned and connected...strategically planning for the future to improve information access and enhance travel to, from and within Newmarket.

HUMAN RESOURCE CONSIDERATIONS

No impact on current staffing levels.

IMPACT ON BUDGET

Operating Budget (Current and Future)

No impact to the Operating Budget.

Capital Budget

No impact to the Capital Budget.

CONTACT

For more information on this report, please contact Mark Kryzanowski at 905-895-5193 extension 2508, or via e-mail at: mkryzanowski@newmarket.ca.

Prepared by:



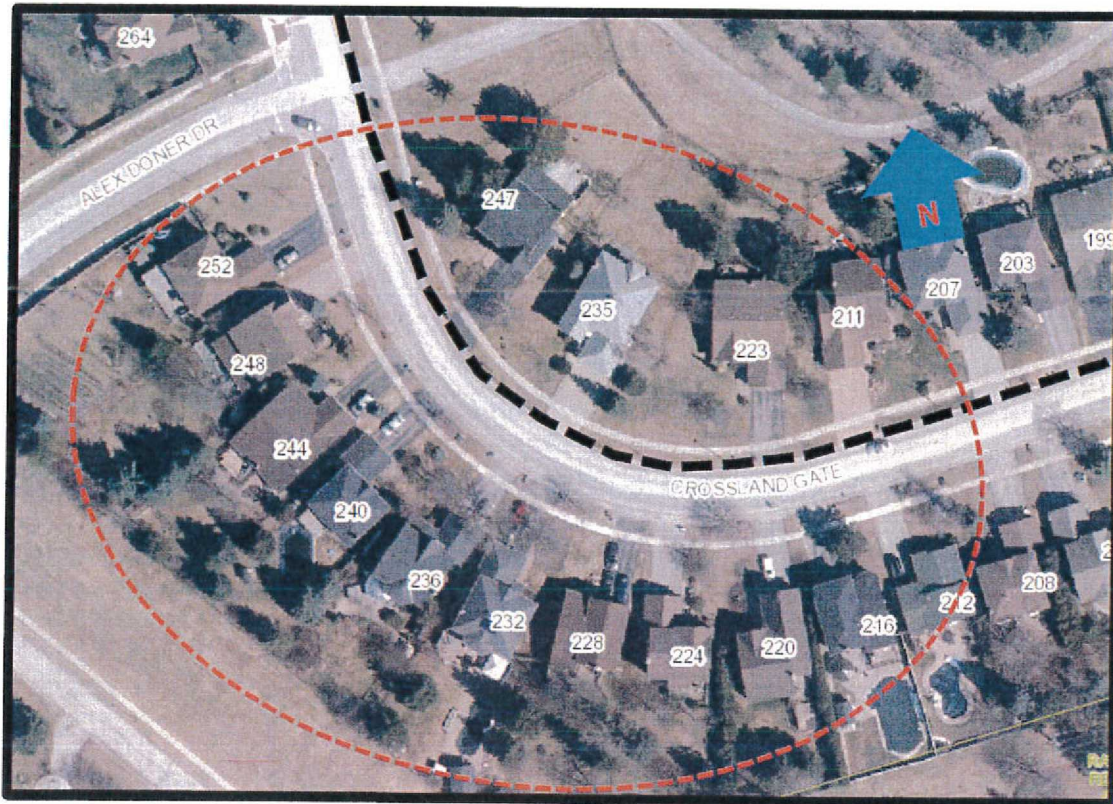
M. Kryzanowski, M.C.I.P., R.P.P.
Manager, Transportation Services



R. Prudhomme, M.Sc., P. Eng.
Director, Engineering Services



P. Noehammer, P. Eng., Commissioner,
Development & Infrastructure Services



- Maintain Existing No Parking Zone
- Proposed Study Area