

A low-angle photograph of a water tower against a blue sky with light clouds. The tower has a white upper section with a blue and green logo and the word 'Newmarket' in blue. Below this is a dark blue band, and at the bottom is a tan-colored section with various antennas. Bare tree branches are visible in the upper left corner.

Working Together

Presentation to
Town of Newmarket Committee of the Whole

Chris Kalimootoo




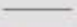

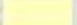

Roy Huetl

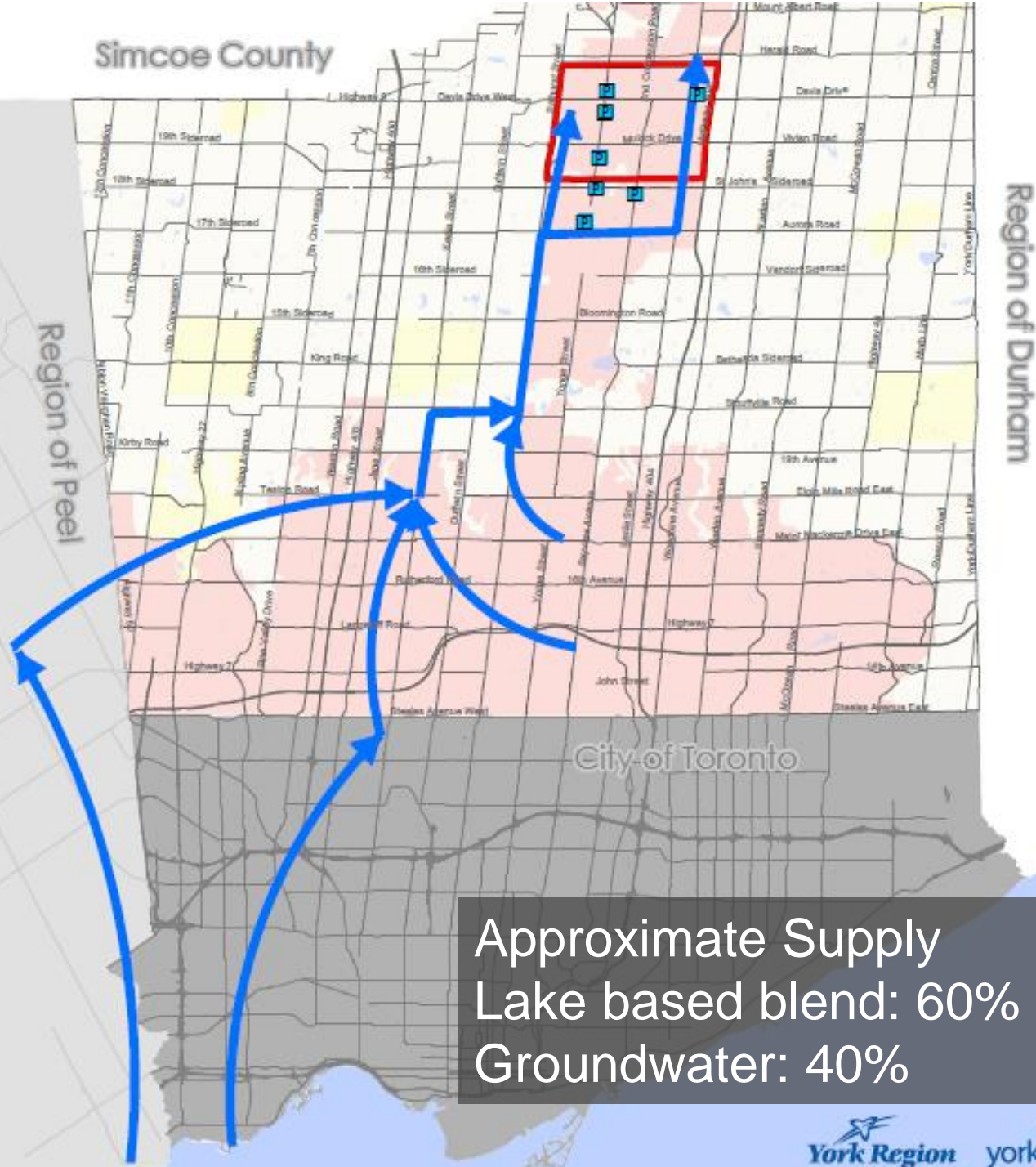
June 20, 2016

York Region Water System

Well & Lake Based Supply

Legend

-  Production Wells
-  Water Flow
-  Town of Newmarket
-  Regional Road
-  Rural Road
-  Waterbody
-  Towns and Villages
-  Urban

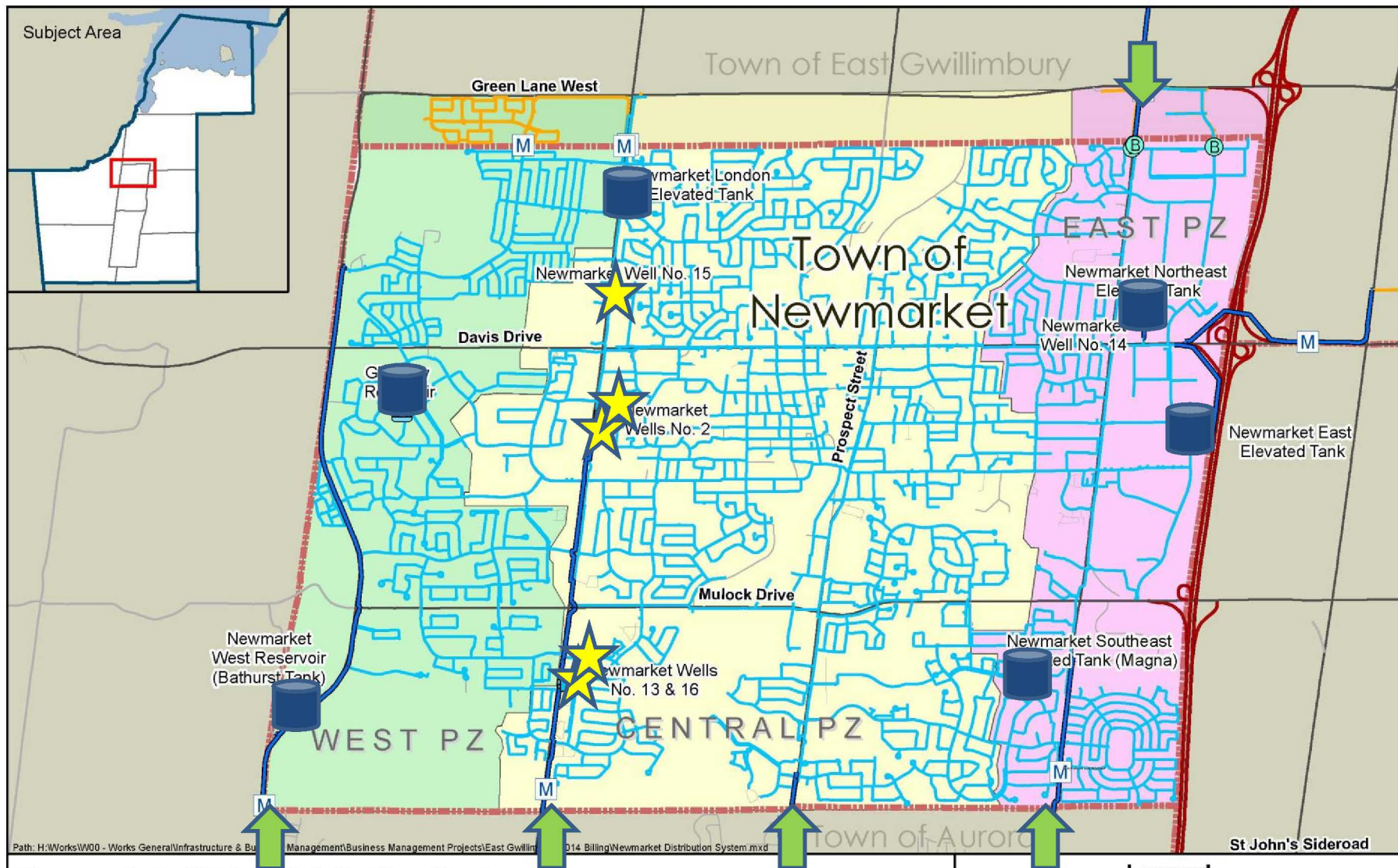


Approximate Supply
Lake based blend: 60%
Groundwater: 40%

Produced by:
The Regional Municipality of York
Strategy & Business Planning, Environmental Services
October 2015

Data Sources:
© Copyright, The Regional Municipalities of Durham
and Peel, County of Simcoe, City of Toronto
© Queen's Printer for Ontario 2003-2015

See York.ca for disclaimer information.



Newmarket - Water Distribution System



Produced by:
Strategy & Business Planning Branch
Environmental Services Department
© Copyright, The Regional Municipality of York, December, 2014
© Copyright, First Base Solutions Inc. 2013 Orthophotography
* Includes © Queen's Printer for Ontario 2003-2014

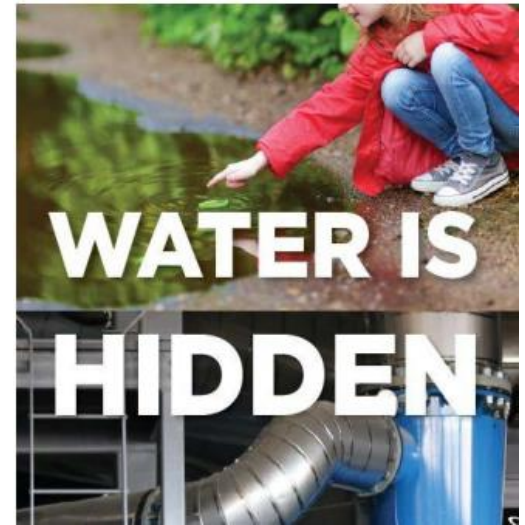
670 335 0 670 Meters

Legend

- Municipal Boundary
- Regional Boundary
- Newmarket Watermain
- East Gwillimbury Watermain
- Regional Watermain
- B Boundary Valves or Meters
- P Production Well
- M Flow Meter
- Water Storage

York Region Supporting Local Partners

- Programs designed to achieve seamless utility integration and collaboration
- Provide operational and technical support to local partners
 - To ensure sufficient water capacity
 - To achieve best water quality possible
- Linkages to the industry experts
 - University of Toronto Drinking Water Research, Water Tap, etc.





Region and Town shared responsibility to optimize and manage water systems

Town of Newmarket

- Delivers safe drinking water to residents and businesses in Newmarket
 - Maintaining local water infrastructure
 - Repairing watermain breaks
 - Monitoring water quality to meet regulatory requirements and inform operations
 - Over 7000 operational samples and 1400 bacterial samples taken in 2015

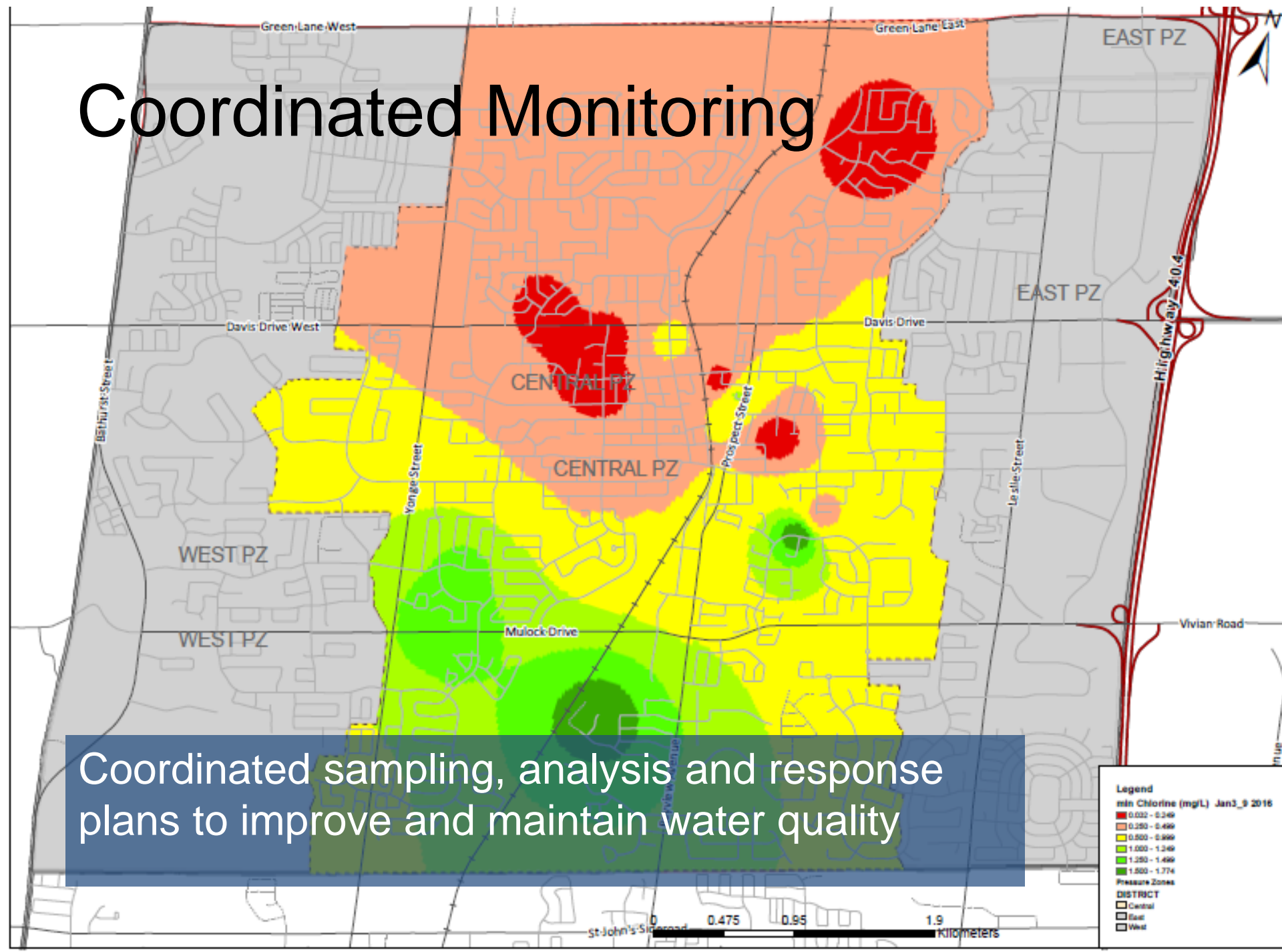
Integrated Operations

Optimization of operational activities:

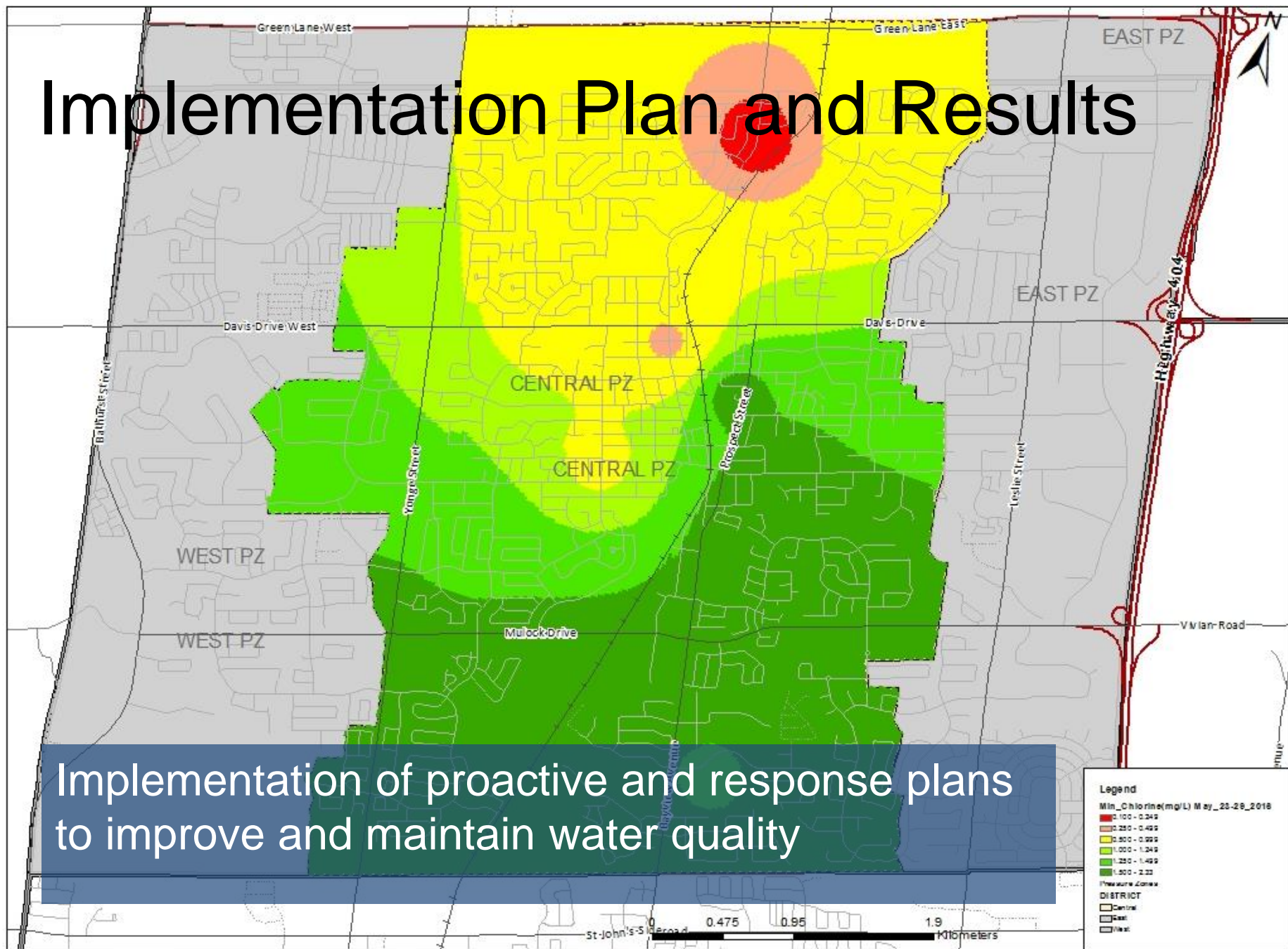
- Source water supply
 - Increased chlorine residuals
 - Optimization of treatment practices
- Hydraulics
 - Modelling and managing hydraulics and system dead ends
- Data Analytics

Coordinated Monitoring

Coordinated sampling, analysis and response plans to improve and maintain water quality



Implementation Plan and Results



Implementation of proactive and response plans to improve and maintain water quality

Strategic Maintenance



Watermain Cleaning

- Video link

Thank you

Roy Huetl

Chris Kalimootoo

