



CORPORATION OF THE TOWN OF NEWMARKET

BY-LAW NUMBER 2016-22

A BY-LAW TO EXEMPT CERTAIN LANDS FROM THE PART LOT CONTROL PROVISIONS OF THE PLANNING ACT.

(Country Wide Homes - Blocks 196, 197, 198 and 199, Plan 65M-4438)

WHEREAS it is deemed advisable to exempt certain lands from the provisions of Section 50(5) of the Planning Act, R.S.O. 1990, c.P.13;

AND WHEREAS the land use to be accommodated by the exemption, the parcel to be created, and any remaining parcel, are in conformity with the governing Official Plan and are permitted and in conformity with the Zoning By-law in effect for the area in question;

AND WHEREAS Plan 65M-4438 was registered on January 13, 2015 and the construction of the units have now advanced to a point where it is appropriate to enact the required by-law;

THEREFORE BE IT ENACTED by the Municipal Council of the Corporation of the Town of Newmarket as follows:

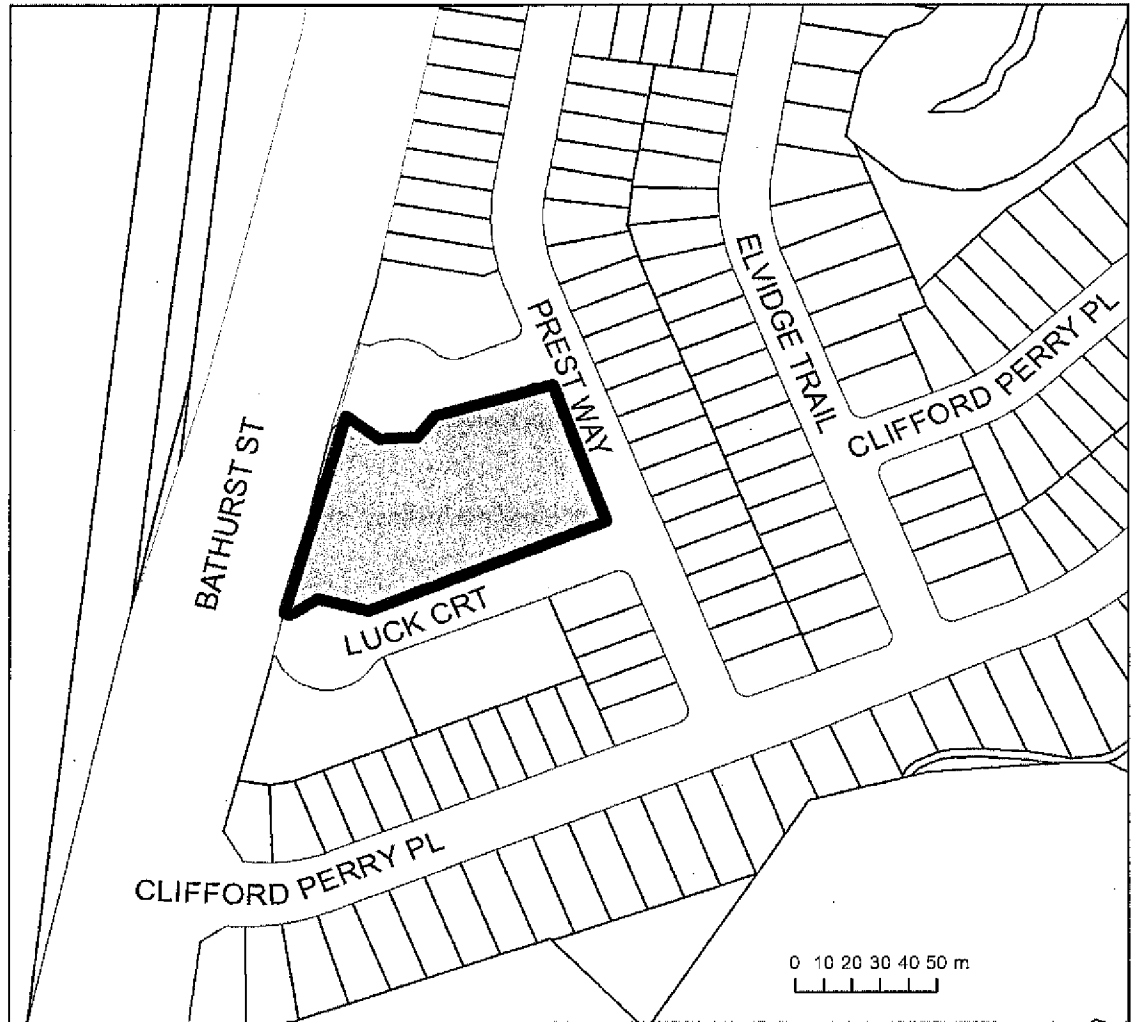
1. The provisions of Section 50(5) of the Planning Act, R.S.O. 1990, c.P. 13 do not apply to the lands described as Blocks 196, 197, 198 and 199 Registered Plan 65M-4438 and further described as Parts 1 through 48 inclusive, Plan 65R-36334 Town of Newmarket, Regional Municipality of York;
2. AND THAT the Municipal Solicitor or her designate be authorized and directed to electronically sign and register this by-law on title.
3. This By-law will lapse after a period of 2 years from the date of enactment.

ENACTED THIS 16TH DAY OF MAY, 2016.

Tony Van Bynen, Mayor

Andrew Brouwer, Town Clerk

LOCATION MAP
Blocks 196, 197, 1989, 199 Plan 65M-4438
Laker Court and Luck Court
East side of Bathurst Street north of Davis Drive
Lowton Phase 7



Subject Lands

TOWN OF NEWMARKET PLANNING DEPARTMENT

For information purposes only - does not form part of By-law 2016-22

Designed & Produced by Information Technology - GIS Printed: May, 2016. Land Parcel Boundaries - © Teramir Inc. and its suppliers. All rights reserved. NOT A PLAN OF SURVEY. 2015 Zoning - Town of Newmarket, 2015. **DISCLAIMER:** This mapping is based on the POLARIS geospatial products compiled using LiDAR and Mapbox/Google maps and control points where available. This mapping is a representation of the earth's surface and previous estimates of area and distance. This map has been produced for illustrative purposes only. It is not a substitute for a legal survey.

T:\D:\Services\Planning\Development-related documentation\Watus Phase 7\part let control exemption by-law\location map lowton 7 PL OE b... mxd