

Automated (Speed) Enforcement Program

**Introduction to
camera-based violations**

Presented By: Flynn Scott

Presented On: January 30, 2023

Introduce ASE



Develop
Program

Today's Purpose

THAT?

THIS?

OTHER?

Present Options



"We're
exploring
Option
X"





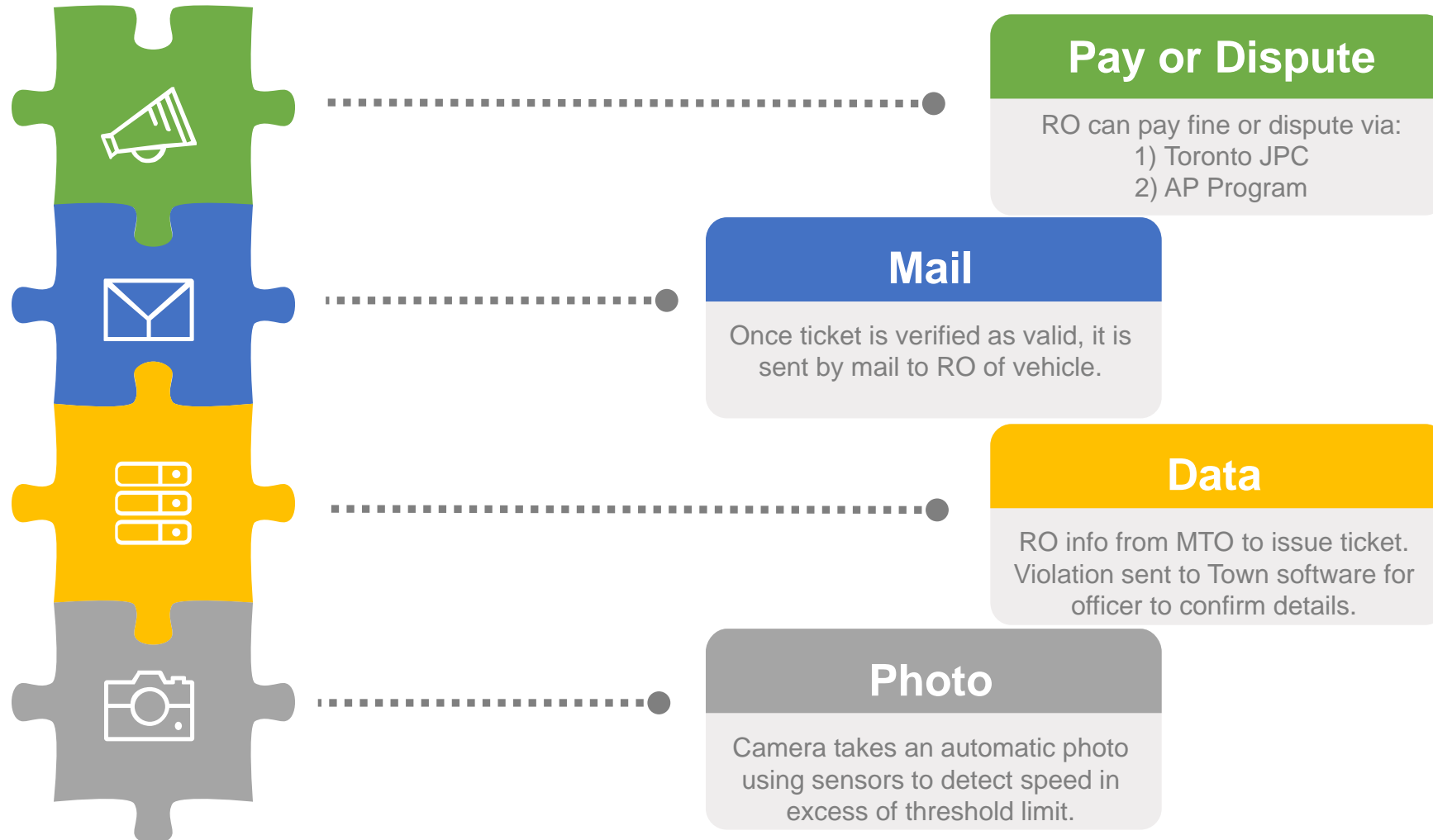
Introduction: ASE Program

What is ASE?

- Automated camera-based technology
- Detects speeding vehicles
- Issues citations to RO of those vehicles

How ASE Works

Town of Newmarket



Chronology

ASE in Ontario

July 2017

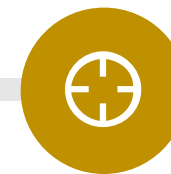
Information Report 2017-11

to provide additional information to Council on AMPS and future ASE opportunities.



May 2017

Province enacts **Bill 65: Safer Schools Act, 2017** to allow camera-based technology for speeding in school and community safety zones.



September 2019

Staff Report 2019-89 to introduce in-house AMPS program for parking-related offences.

Chronology

ASE in Ontario

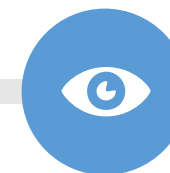
October 2019

Municipalities across Ontario lobby for the use of AMPS for ASE.



Sept – Dec 2019

City of Toronto pilots first ASE Program and establishes a JPC for shared services.
(under POA)



November 2019

O'Reg 389/19 prescribing the requirements for an ASE program.
(under POA)



Chronology

ASE in Ontario

February 2020

Launch of City of Toronto ASE program.

York Region announces intent to join two year ASE pilot program via Toronto's JPC.



July 2022

Province enacts **O'Reg 355/22** to allow for ASE programs to administer contraventions via **APs**

November 2022 - Current

Town staff conducts preliminary review of ASE to present options for Council's consideration.



Key Differences

Between AMPS & AP's

AMPS



ASE





Why Adopt an ASE Program?

- ✓ Improves compliance w/ posted speed limits
- ✓ Reduces vehicle-related accidents & fatalities
- ✓ Reduces congestion & improves traffic flow
- ✓ Enhances overall street safety for all users

Street Safety Facts

Town of Newmarket



33%

Fatal

Speed is a contributing factor in 1/3 of fatal collisions

61%

Volume

Specific school zone with the highest traffic volume to speeding rate

78%

Speeding

Specific school zone where vehicles are speeding at alarming rates

30%

Decrease

ASE programs have demonstrated an average 30% speed reduction

Town's Commitment

To Street Safety

Traffic-calming
measures



Improved lighting
& visibility



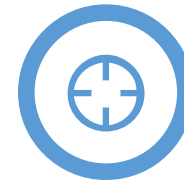
Street sweeping
program



Dedicated
bicycle lanes



Constructing
multi-use pathways



Public education
campaigns

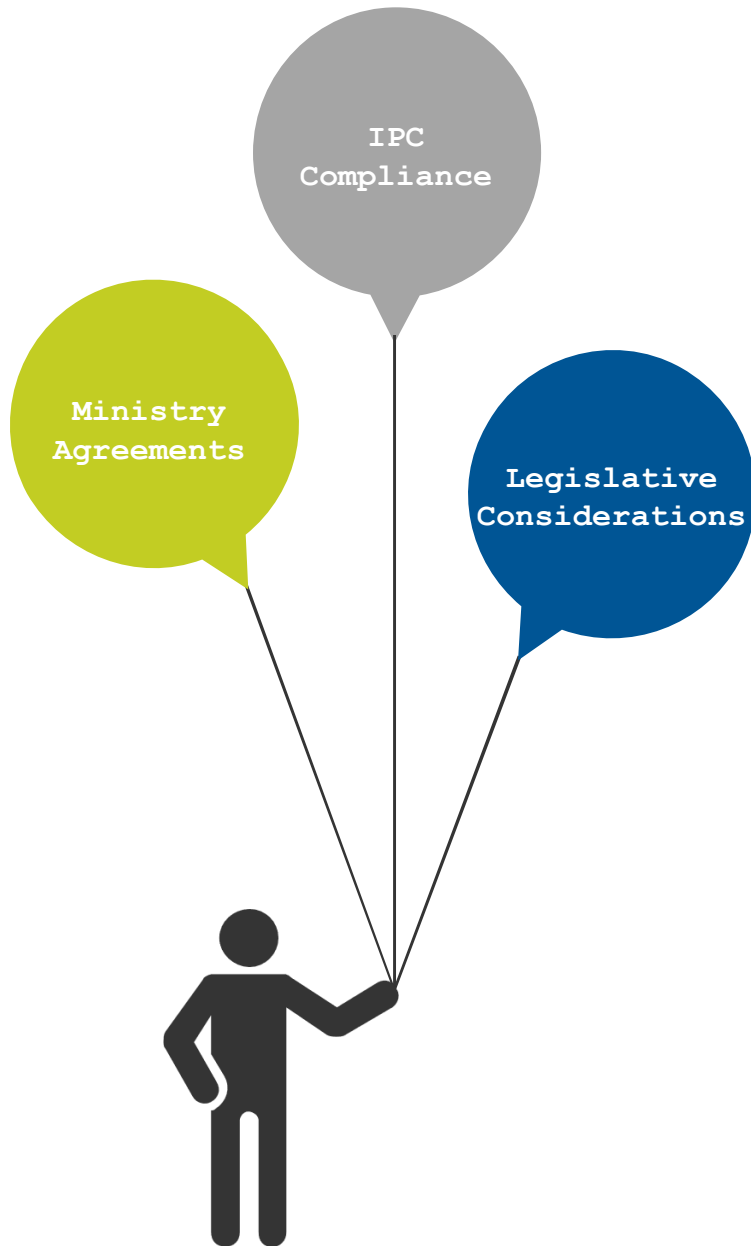
The Town continues its ongoing commitment to road (street) safety for all users.

Complete Streets Policy

2018-2022 Strategic Priority: Safe Transportation

■ Program Requirements





01 . ASE Program: Requirements

1

Ministry Compliance

- Request agreement with MTO
- Enact ASE By-law for AP Program
- Request officer training & designation from Ministry of Attorney General (MAG)

2

IPC Compliance

- Review requirements with ASE auditing, reporting, and retention
- Prepare PIA/policies/procedures

3

Legislative Compliance

Program must align with:

- Highway Traffic Act
- O'Reg. 355/22 (HTA)
- Municipal Act
- Provincial Offences Act*

Options to Consider

when adopting an ASE program



Toronto



Newmarket

20/50

90K

One-time fee to join TO's program & comply with limits.

01. Join Toronto's JPC

Toronto offers municipalities an option to join their JPC for both an upfront and ongoing cost to operate the program.



Newmarket



Others

100/?

100%

Town owns and operates ASE program with options to expand service in the future.

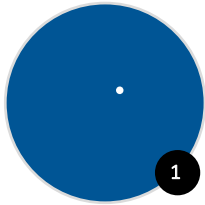
02. Newmarket Processing Centre

Town adopts Newmarket-specific ASE program.
Considers future opportunities to become a JPC.

OPTION #1

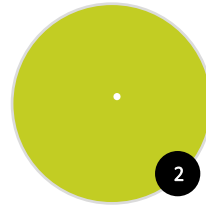
Join Toronto's JPC

02 . ASE Program: Requirements *(based on option)*



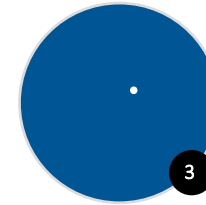
Council selects Toronto's Program

1. Provide direction to request to join City of Toronto's JPC



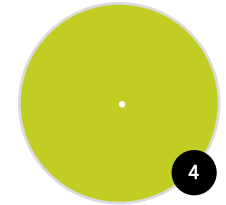
Agreement with MTO

1. Town requests agreement for City of Toronto to access Newmarket plate registrant info via ARIS



Contract with City of Toronto

1. Town signs contract with Toronto which specifies:
 - ☐ # of cameras placed
 - ☐ # of offences (annual)
 - ☐ start-up cost to join
 - ☐ \$ fee per ticket
 - ☐ additional dispute fees



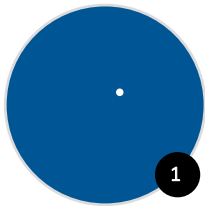
Program Development

1. Formation of working group
2. Consultation & creativity
3. Return to Council to present options on size and scope of program + neighbourhood input

OPTION #2

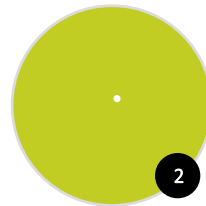
Newmarket-specific ASE program

02 . ASE Program: Steps Involved *(based on option)*



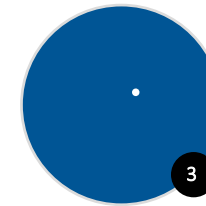
Council adopts AE framework

1. Provide direction to create Newmarket-specific PC
2. Approve requests in report
3. Adopt AE By-law



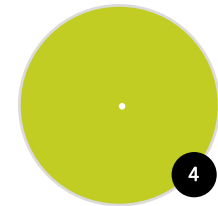
Agreement with MTO

1. Town requests agreement to access the plate registrant info via ARIS



Agreement with MAG

1. Town signs contract with MAG for VC surcharge
2. Reqs for sending plate denial requests to MTO via MAG interface

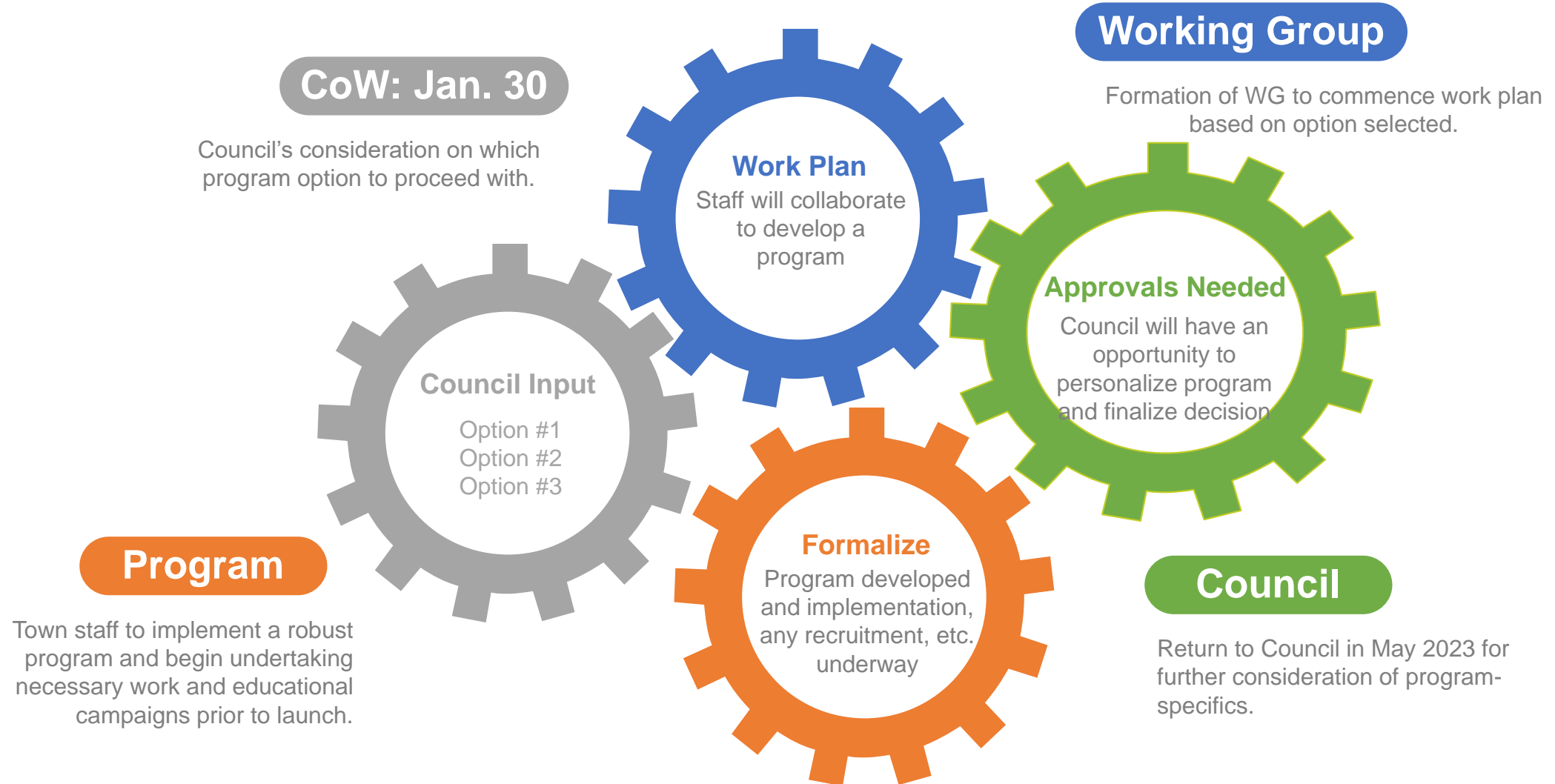


Program Development

1. Formation of working group
2. Consultation & creativity
3. Return to Council to present options on size and scope of program + neighbourhood input

What Happens Next?

Automated Enforcement



03. ASE Program: Approvals Needed **Today**



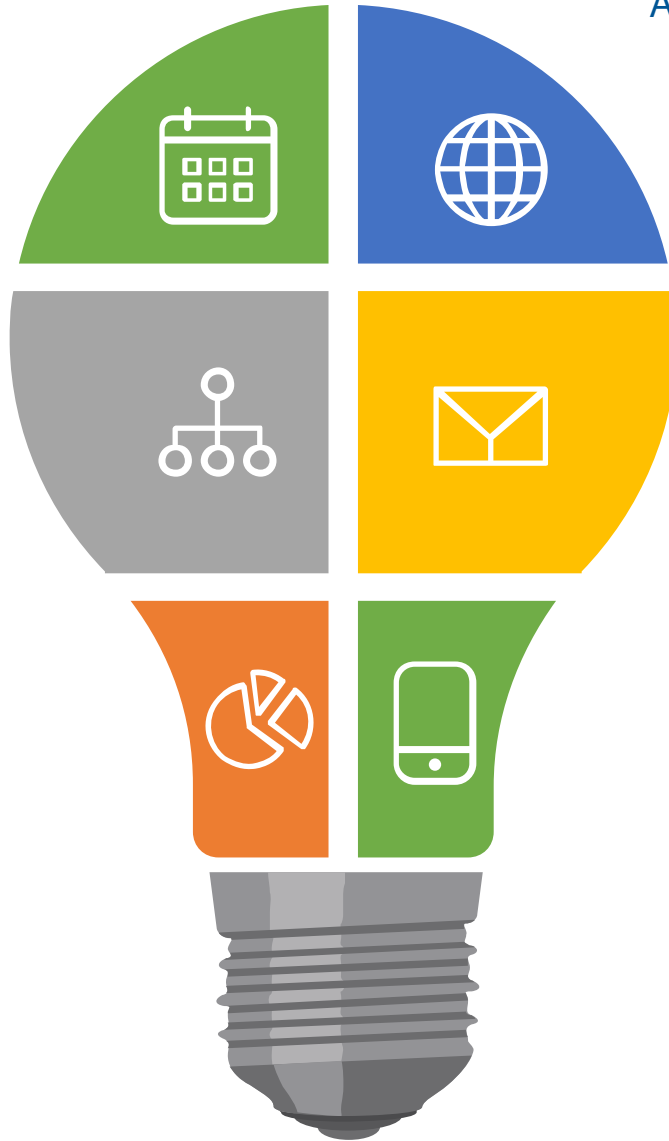
RFPs

Regardless of which option is selected, one RFP will still be required for case management software.

Staff will report back with camera-vendor selection based on option selected.

Questions?

Automated Enforcement



QUESTIONS?



COMMENTS?



CONCERNS?

