



We Merchandise Space Inc., and The Forrest Group are collectively, referred to as the Designer.

This drawing, as an instrument of service, is provided by and is the property of the Designer.

The Contractor must verify and accept responsibility for all dimensions and conditions on site and must notify the Designer of any variations from the supplied information.

This drawing is not to be scaled.

The Designer is not responsible for the accuracy of survey, mechanical, electrical, etc., information shown on this drawing. Refer to the appropriate Consultant's drawings before proceeding with the work.

Construction must conform to all applicable codes and requirements of authorities having jurisdiction.

The Contractor working from drawings not specifically marked "For Construction" must assume full responsibility and bear costs for any corrections or damages resulting from his work.

The Designer retains ownership of copyright in all drawings. You are granted a license to construct, reproduce, distribute, exhibit or otherwise use, said materials, which licence may be revoked for cause, including but not limited to, misuse of drawings or failure to pay accounts.

It is expressly understood and agreed that no action, lawsuit, or claim may be made against the employees, officers, or directors of We Merchandise Space Inc., and The Forrest Group for any reason whatsoever.

For greater clarity the Designer shall not be liable, directly or indirectly, in any manner whatsoever by any party by reason of the use of the drawings and materials referred to Herein.

ISSUES		
NO.	DATE	DESCRIPTION
1	07/25/2013	ZONING APPLICATION
2	02/02/2016	AMENDED ISSUE FOR ZONING
NO. DATE DESCRIPTION		
REVISIONS		



FORREST GROUP
ASSERTIVELY GREEN

We Merchandise Space Inc.
590 Alden Road, Suite 211 Markham, Ont. L3R 8N2
Tel. 905.752.6776 Fax. 905 752 6781
www.forrestgroup.ca

--	--

CLIENT:

MAIN STREET CLOCK INC.

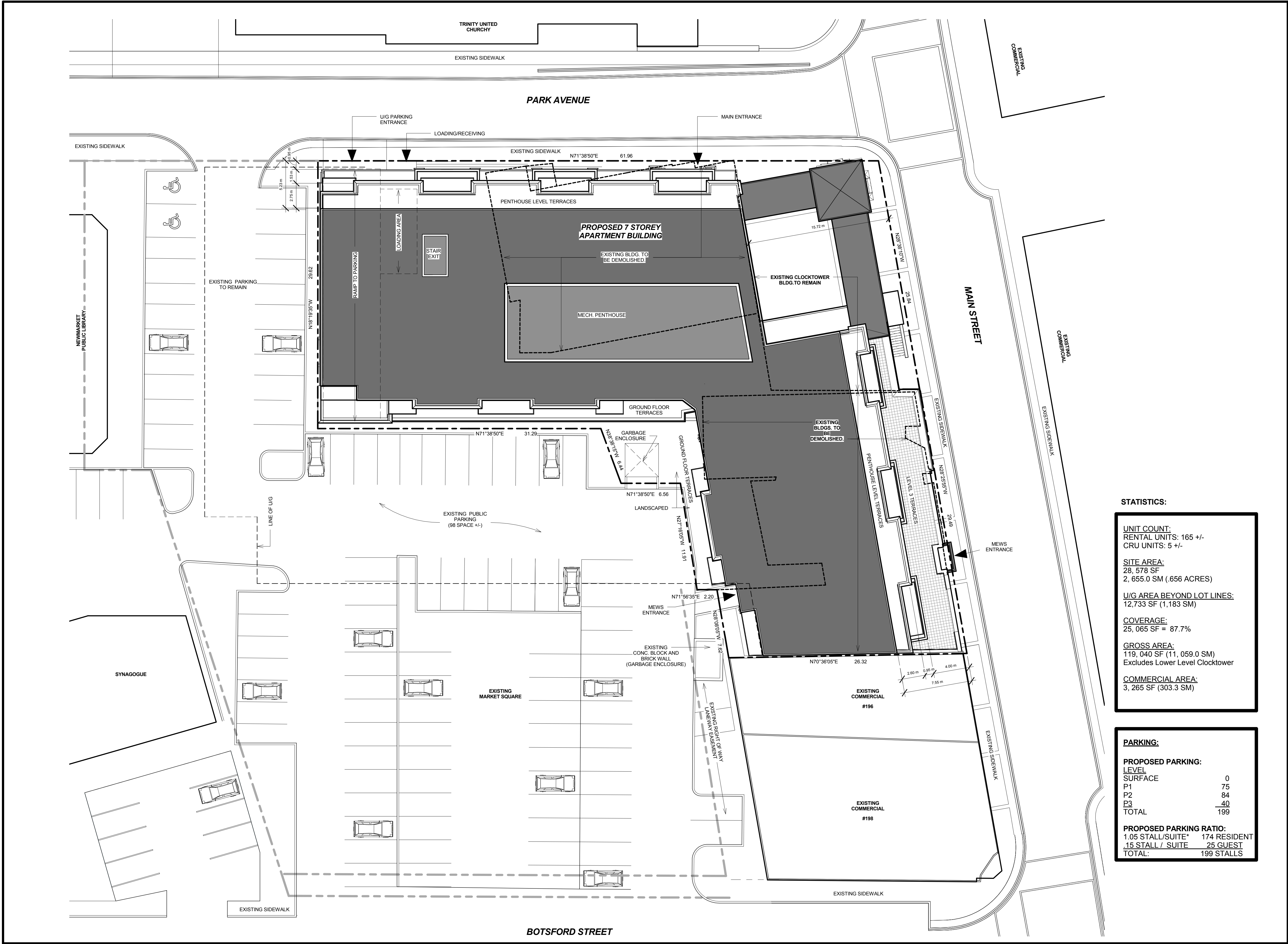
PROJECT:

PROPOSED
CLOCK TOWER REDEVELOPMENT
NEWMARKET, ONTARIO

DRAWING:

MAIN STREET PERSPECTIVE

Designer: PR	Project number: 6392	DRAWING NO: A0
Drawn by: FM	Date: JUNE 2015	
Checked by: PR	SCALE: N.T.S	



STATISTICS:

UNIT COUNT:
RENTAL UNITS: 165 +/-
CRU UNITS: 5 +/-

SITE AREA:
28,578 SF
2,655.0 SM (.656 ACRES)

U/G AREA BEYOND LOT LINES:
12,733 SF (1,183 SM)

COVERAGE:
25,065 SF = 87.7%

GROSS AREA:
119,040 SF (11,059.0 SM)
Excludes Lower Level Clocktower

COMMERCIAL AREA:
3,265 SF (303.3 SM)

PARKING:

PROPOSED PARKING:

LEVEL	
SURFACE	0
P1	75
P2	84
P3	40
TOTAL	199

PROPOSED PARKING RATIO:
1.05 STALL/SUITE* 174 RESIDENT
.15 STALL / SUITE 25 GUEST
TOTAL: 199 STALLS

We Merchandise Space Inc., and The Forrest Group are collectively, referred to as the Designer.

This drawing, as an instrument of service, is provided by and is the property of the Designer.

The Contractor must verify and accept responsibility for all dimensions and conditions on site and must notify the Designer of any variations from the supplied information.

This drawing is not to be scaled.

The Designer is not responsible for the accuracy of survey, mechanical, electrical, etc., information shown on this drawing. Refer to the appropriate Consultant's drawings before proceeding with the work.

Construction must conform to all applicable codes and requirements of authorities having jurisdiction.

The Contractor working from drawings not specifically marked 'For Construction' must assume full responsibility and bear costs for any corrections or damages resulting from his work.

The Designer retains ownership of copyright in all drawings. You are granted a license to construct, reproduce, distribute, exhibit or otherwise use, said materials, which licence may be revoked for cause, including but not limited to, misuse of drawings or failure to pay accounts.

It is expressly understood and agreed that no action, lawsuit, or claim may be made against the employees, officers, or directors of We Merchandise Space Inc., and The Forrest Group for any reason whatsoever.

For greater clarity the Designer shall not be liable, directly or indirectly, in any manner whatsoever by any party by reason of the use of the drawings and materials referred to Herein.

ISSUES

NO. DATE DESCRIPTION

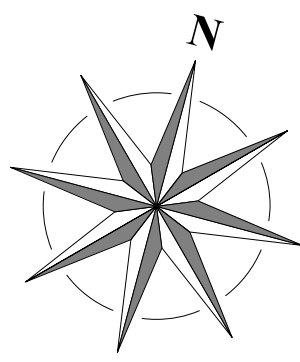
1	07/25/2013	ZONING APPLICATION
1	02/02/2016	AMENDED ISSUE FOR ZONING

NO. DATE DESCRIPTION

REVISIONS



We Merchandise Space Inc.
590 Alden Road, Suite 211 Markham, Ont. L3R 8N2
Tel. 905.752.6776 Fax. 905.752.6781
www.forrestgroup.ca



CLIENT:

MAIN STREET CLOCK INC.

PROJECT:

PROPOSED
CLOCK TOWER REDEVELOPMENT
NEWMARKET, ONTARIO

DRAWING:

SITE PLAN

Designer:

Project number:
6392

PR

Drawn by:

Date:
JULY 2013

FM

Checked by:

SCALE:
1 : 200

PR

DRAWING NO:

A1



Loft Area Schedule (Rentable)				
Number	Name	Area	Comments	Level
201	1+D-C	806 SF	Suite	Level 2
202	2+D-A	876 SF	Suite	Level 2
203	1-C	450 SF	Suite	Level 2
204	1-V	426 SF	Suite	Level 2
205	2+D-A	876 SF	Suite	Level 2
206	2+D-A	876 SF	Suite	Level 2
207	2+I+D	914 SF	Suite	Level 2
208	2+D-E	900 SF	Suite	Level 2
209	1-Z	605 SF	Suite	Level 2
210	2-T	727 SF	Suite	Level 2
211	1+D-W	564 SF	Suite	Level 2
212	2+D-D	1103 SF	Suite	Level 2
213	2+D-G	1078 SF	Suite	Level 2
214	1+D-X	662 SF	Suite	Level 2
215	1-G	675 SF	Suite	Level 2
Grand total: 15		11538 SF		

Gross Floor Area: 13, 594 SF (Exc. 4,266 SF 2nd Level of 2 storey units)
Includes: Elevators / Stairs / Shaft/ Corridor

We Merchandise Space Inc., and The Forrest Group are collectively, referred to as the Designer.

This drawing, as an instrument of service, is provided by and is the property of the Designer.

The Contractor must verify and accept responsibility for all dimensions and conditions on site and must notify the Designer of any variations from the supplied information.

This drawing is not to be scaled.

The Designer is not responsible for the accuracy of survey, mechanical, electrical, etc., information shown on this drawing. Refer to the appropriate Consultant's drawings before proceeding with the work.

Construction must conform to all applicable codes and requirements of authorities having jurisdiction.


The Contractor working from drawings not specifically marked "For Construction" must assume full responsibility and bear costs for any corrections or damages resulting from his work.

The Designer retains ownership of copyright in all drawings. You are granted a license to construct, reproduce, distribute, exhibit or otherwise use, said materials, which licence may be revoked for cause, including but not limited to, misuse of drawings or failure to pay accounts.

It is expressly understood and agreed that no action, lawsuit, or claim may be made against the employees, officers, or directors of We Merchandise Space Inc., and The Forrest Group for any reason whatsoever.

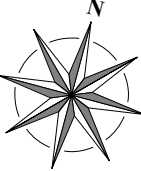
For greater clarity the Designer shall not be liable, directly or indirectly, in any manner whatsoever by any party by reason of the use of the drawings and materials referred to herein.

ISSUES		
NO.	DATE	DESCRIPTION
1	07/25/2013	ZONING APPLICATION
2	02/02/2016	AMENDED ISSUE FOR ZONING
REVISIONS		
NO.	DATE	DESCRIPTION



FORREST GROUP
ASSERTIVELY GREEN

We Merchandise Space Inc.
590 Alden Road, Suite 211 Markham, Ont. L3R 8N2
Tel. 905.752.6776 Fax. 905 752 6781
www.forrestgroup.ca



CLIENT: MAIN STREET CLOCK INC.		
PROJECT: PROPOSED 7 STOREY CLOCK TOWER REDEVELOPMENT		
DRAWING: 2nd Floor		
Designer: Designer	Project number: 6392	DRAWING NO: A3
Drawn by: Author	Date: JUNE 2015	
Checked by: Checker	SCALE: 1 : 125	



2nd Fl. Area Schedule (Rentable)				
Number	Name	Area	Comments	Level
301	1+D-C	806 SF	Suite	Level 3
302	1-V	426 SF	Suite	Level 3
303	1-C	450 SF	Suite	Level 3
304	1-C	450 SF	Suite	Level 3
305	1-V	426 SF	Suite	Level 3
306	2+D-A	876 SF	Suite	Level 3
307	2+D-A	876 SF	Suite	Level 3
308	2+D-1	914 SF	Suite	Level 3
309	2+D-E	900 SF	Suite	Level 3
310	1-I	663 SF	Suite	Level 3
311	1+D-K	781 SF	Suite	Level 3
312	1+D-K	781 SF	Suite	Level 3
313	1+D-K	781 SF	Suite	Level 3
314	1+D-K	781 SF	Suite	Level 3
315	1+D-G	790 SF	Suite	Level 3
316	1+D-Q	689 SF	Suite	Level 3
317	1+D-J	778 SF	Suite	Level 3
318	1-E	628 SF	Suite	Level 3
319	2-M	756 SF	Suite	Level 3
320	2-L	786 SF	Suite	Level 3
321	2+D-F	907 SF	Suite	Level 3
322	1+D-D	722 SF	Suite	Level 3
323	1+D-D	722 SF	Suite	Level 3
324	1-D	453 SF	Suite	Level 3
325	1-G	675 SF	Suite	Level 3
Grand total: 25		17816 SF		

Gross Floor Area: 19, 741 SF
Includes: Elevators / Stairs / Shaft/ Corridor

We Merchandise Space Inc., and The Forrest Group are collectively, referred to as the Designer.

This drawing, as an instrument of service, is provided by and is the property of the Designer.

The Contractor must verify and accept responsibility for all dimensions and conditions on site and must notify the Designer of any variations from the supplied information.

This drawing is not to be scaled.

The Designer is not responsible for the accuracy of survey, mechanical, electrical, etc., information shown on this drawing. Refer to the appropriate Consultant's drawings before proceeding with the work.

Construction must conform to all applicable codes and requirements of authorities having jurisdiction.

The Contractor working from drawings not specifically marked "For Construction" must assume full responsibility and bear costs for any corrections or damages resulting from his work.

The Designer retains ownership of copyright in all drawings. You are granted a license to construct, reproduce, distribute, exhibit or otherwise use, said materials, which licence may be revoked for cause, including but not limited to, misuse of drawings or failure to pay accounts.

It is expressly understood and agreed that no action, lawsuit, or claim may be made against the employees, officers, or directors of We Merchandise Space Inc., and The Forrest Group for any reason whatsoever.

For greater clarity the Designer shall not be liable, directly or indirectly, in any manner whatsoever by any party by reason of the use of the drawings and materials referred to Herein.

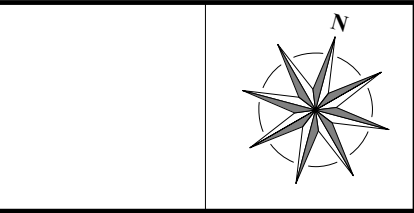
ISSUES		
NO.	DATE	DESCRIPTION
1	07/25/2013	ZONING APPLICATION
2	02/02/2016	AMENDED ISSUE FOR ZONING

NO.	DATE	DESCRIPTION
REVISIONS		



FORREST GROUP
ASSERTIVELY GREEN

We Merchandise Space Inc.
590 Alden Road, Suite 211 Markham, Ont. L3R 8N2
Tel. 905.752.6776 Fax. 905 752 6781
www.forrestgroup.ca



CLIENT:

MAIN STREET CLOCK INC.

PROJECT:

**PROPOSED
CLOCK TOWER REDEVELOPMENT
NEWMARKET, ONTARIO**

DRAWING:

3rd Floor

Designer:	Project number:	DRAWING NO:
Designer	6392	A4
Drawn by:	Date:	
Author	JUNE 2015	
Checked by:	SCALE:	
Checker	1 : 125	



4th Fl. Area Schedule (Rentable)				
Number	Name	Area	Comments	Level
401	1+D-C	804 SF	Suite	Level 4
402	1-V	426 SF	Suite	Level 4
403	1-C	450 SF	Suite	Level 4
404	1-C	450 SF	Suite	Level 4
405	1-V	426 SF	Suite	Level 4
406	2+D-A	876 SF	Suite	Level 4
407	2+D-A	876 SF	Suite	Level 4
408	2+D-1	914 SF	Suite	Level 4
409	2+D-E	900 SF	Suite	Level 4
410	1-I	663 SF	Suite	Level 4
411	1+D-K	781 SF	Suite	Level 4
412	1+D-K	781 SF	Suite	Level 4
413	1+D-K	781 SF	Suite	Level 4
414	1+D-K	781 SF	Suite	Level 4
415	1+D-G	790 SF	Suite	Level 4
416	1+D-V	835 SF	Suite	Level 4
417	1+D-P	768 SF	Suite	Level 4
418	1+D-H	792 SF	Suite	Level 4
419	1+D-Q	689 SF	Suite	Level 4
420	1+D-J	778 SF	Suite	Level 4
421	1-E	628 SF	Suite	Level 4
422	2-M	755 SF	Suite	Level 4
423	2-L	785 SF	Suite	Level 4
424	2+D-F	907 SF	Suite	Level 4
425	1+D-D	722 SF	Suite	Level 4
426	1+D-D	722 SF	Suite	Level 4
427	1-D	453 SF	Suite	Level 4
428	1-G	678 SF	Suite	Level 4
Grand total: 28		20211 SF		

Gross Floor Area: 21, 955 SF
Includes: Elevators / Stairs / Shaft.

We Merchandise Space Inc., and The Forrest Group are collectively, referred to as the Designer.

This drawing, as an instrument of service, is provided by and is the property of the Designer.

The Contractor must verify and accept responsibility for all dimensions and conditions on site and must notify the Designer of any variations from the supplied information.

This drawing is not to be scaled.

The Designer is not responsible for the accuracy of survey, mechanical, electrical, etc., information shown on this drawing. Refer to the appropriate Consultant's drawings before proceeding with the work.

Construction must conform to all applicable codes and requirements of authorities having jurisdiction.


The Contractor working from drawings not specifically marked "For Construction" must assume full responsibility and bear costs for any corrections or damages resulting from his work.

The Designer retains ownership of copyright in all drawings. You are granted a license to construct, reproduce, distribute, exhibit or otherwise use, said materials, which licence may be revoked for cause, including but not limited to, misuse of drawings or failure to pay accounts.

It is expressly understood and agreed that no action, lawsuit, or claim may be made against the employees, officers, or directors of We Merchandise Space Inc., and The Forrest Group for any reason whatsoever.

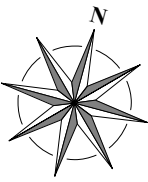
For greater clarity the Designer shall not be liable, directly or indirectly, in any manner whatsoever by any party by reason of the use of the drawings and materials referred to herein.

ISSUES		
NO.	DATE	DESCRIPTION
1	07/25/2013	ZONING APPLICATION
2	02/02/2016	AMENDED ISSUE FOR ZONING
NO. DATE DESCRIPTION		
REVISIONS		



FORREST GROUP
ASSERTIVELY GREEN

We Merchandise Space Inc.
590 Alden Road, Suite 211 Markham, Ont. L3R 8N2
Tel. 905.752.6776 Fax. 905 752 6781
www.forrestgroup.ca



CLIENT: MAIN STREET CLOCK INC.		
PROJECT: PROPOSED CLOCK TOWER REDEVELOPMENT NEWMARKET, ONTARIO		
DRAWING: 4th Floor		
Designer: Designer	Project number: 6392	DRAWING NO: A5
Drawn by: Author	Date: JUNE 2015	
Checked by: Checker	SCALE: 1 : 125	



4th and 5th. Fl. Area Schedule (Rentable)				
Number	Name	Area	Comments	Level
501	1+D-C	804 SF	Suite	Level 5
502	1-V	426 SF	Suite	Level 5
503	1-C	450 SF	Suite	Level 5
504	1-C	450 SF	Suite	Level 5
505	1-V	426 SF	Suite	Level 5
506	2+D-A	876 SF	Suite	Level 5
507	2+D-A	876 SF	Suite	Level 5
508	2+D-1	914 SF	Suite	Level 5
509	2+D-E	900 SF	Suite	Level 5
510	1-R	575 SF	Suite	Level 5
511	1+D-S	693 SF	Suite	Level 5
512	1+D-S	693 SF	Suite	Level 5
513	1+D-S	693 SF	Suite	Level 5
514	1+D-S	693 SF	Suite	Level 5
515	1+D-N	756 SF	Suite	Level 5
516	1+D-L	662 SF	Suite	Level 5
517	1+D-A	714 SF	Suite	Level 5
518	1-B	562 SF	Suite	Level 5
519	2-K	693 SF	Suite	Level 5
520	1-F	649 SF	Suite	Level 5
521	2+D-F	907 SF	Suite	Level 5
522	1+D-D	722 SF	Suite	Level 5
523	1+D-D	722 SF	Suite	Level 5
524	1-D	453 SF	Suite	Level 5
525	1-G	675 SF	Suite	Level 5
Grand total: 25		16986 SF		

Gross Floor Area: 18, 916 SF
Includes: Elevators / Stairs / Shaft.

We Merchandise Space Inc., and The Forrest Group are collectively, referred to as the Designer.

This drawing, as an instrument of service, is provided by and is the property of the Designer.

The Contractor must verify and accept responsibility for all dimensions and conditions on site and must notify the Designer of any variations from the supplied information.

This drawing is not to be scaled.

The Designer is not responsible for the accuracy of survey, mechanical, electrical, etc., information shown on this drawing. Refer to the appropriate Consultant's drawings before proceeding with the work.

Construction must conform to all applicable codes and requirements of authorities having jurisdiction.

The Contractor working from drawings not specifically marked "For Construction" must assume full responsibility and bear costs for any corrections or damages resulting from his work.

The Designer retains ownership of copyright in all drawings. You are granted a license to construct, reproduce, distribute, exhibit or otherwise use, said materials, which licence may be revoked for cause, including but not limited to, misuse of drawings or failure to pay accounts.

It is expressly understood and agreed that no action, lawsuit, or claim may be made against the employees, officers, or directors of We Merchandise Space Inc., and The Forrest Group for any reason whatsoever.

For greater clarity the Designer shall not be liable, directly or indirectly, in any manner whatsoever by any party by reason of the use of the drawings and materials referred to herein.

ISSUES		
NO.	DATE	DESCRIPTION
1	07/25/2013	ZONING APPLICATION
2	02/02/2016	AMENDED ISSUE FOR ZONING
NO. DATE DESCRIPTION		
REVISIONS		

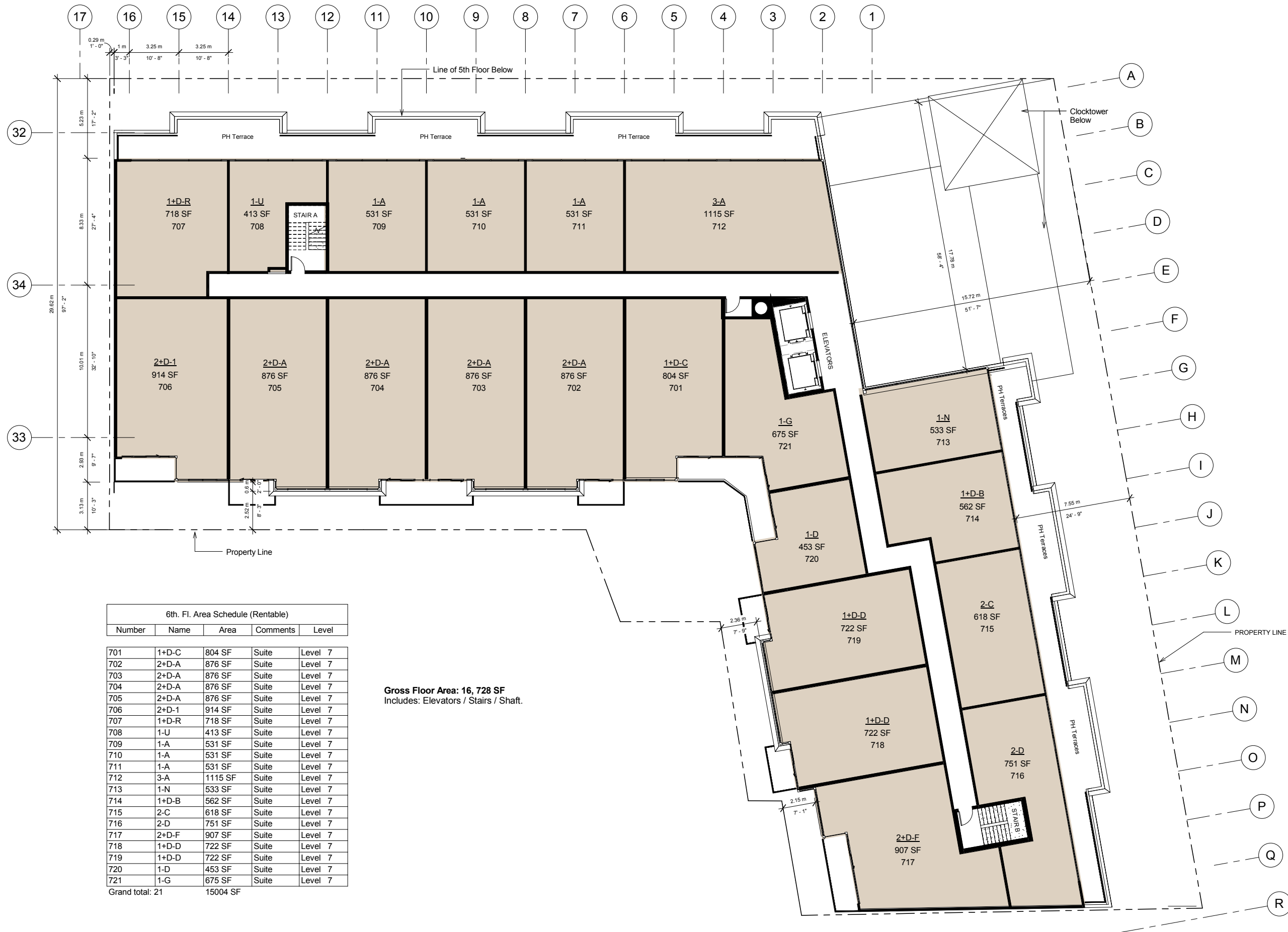


FORREST GROUP
ASSERTIVELY GREEN

We Merchandise Space Inc.
590 Alden Road, Suite 211 Markham, Ont. L3R 8N2
Tel. 905.752.6776 Fax. 905 752 6781
www.forrestgroup.ca



CLIENT: MAIN STREET CLOCK INC.		
PROJECT: PROPOSED CLOCK TOWER REDEVELOPMENT NEWMARKET, ONTARIO		
DRAWING: 5th and 6th Floor (Typical)		
Designer: Designer	Project number: 6392	DRAWING NO: A6
Drawn by: Author	Date: JUNE 2015	
Checked by: Checker	SCALE: 1 : 125	



6th. Fl. Area Schedule (Rentable)				
Number	Name	Area	Comments	Level
701	1+D-C	804 SF	Suite	Level 7
702	2+D-A	876 SF	Suite	Level 7
703	2+D-A	876 SF	Suite	Level 7
704	2+D-A	876 SF	Suite	Level 7
705	2+D-A	876 SF	Suite	Level 7
706	2+D-1	914 SF	Suite	Level 7
707	1+D-R	718 SF	Suite	Level 7
708	1-U	413 SF	Suite	Level 7
709	1-A	531 SF	Suite	Level 7
710	1-A	531 SF	Suite	Level 7
711	1-A	531 SF	Suite	Level 7
712	3-A	1115 SF	Suite	Level 7
713	1-N	533 SF	Suite	Level 7
714	1+D-B	562 SF	Suite	Level 7
715	2-C	618 SF	Suite	Level 7
716	2-D	751 SF	Suite	Level 7
717	2+D-F	907 SF	Suite	Level 7
718	1+D-D	722 SF	Suite	Level 7
719	1+D-D	722 SF	Suite	Level 7
720	1-D	453 SF	Suite	Level 7
721	1-G	675 SF	Suite	Level 7
Grand total: 21		15004 SF		

Gross Floor Area: 16, 728 SF
Includes: Elevators / Stairs / Shaft.

We Merchandise Space Inc., and The Forrest Group are collectively, referred to as the Designer.

This drawing, as an instrument of service, is provided by and is the property of the Designer.

The Contractor must verify and accept responsibility for all dimensions and conditions on site and must notify the Designer of any variations from the supplied information.

This drawing is not to be scaled.

The Designer is not responsible for the accuracy of survey, mechanical, electrical, etc., information shown on this drawing. Refer to the appropriate Consultant's drawings before proceeding with the work.

Construction must conform to all applicable codes and requirements of authorities having jurisdiction.

The Contractor working from drawings not specifically marked "For Construction" must assume full responsibility and bear costs for any corrections or damages resulting from his work.

The Designer retains ownership of copyright in all drawings. You are granted a license to construct, reproduce, distribute, exhibit or otherwise use, said materials, which licence may be revoked for cause, including but not limited to, misuse of drawings or failure to pay accounts.

It is expressly understood and agreed that no action, lawsuit, or claim may be made against the employees, officers, or directors of We Merchandise Space Inc., and The Forrest Group for any reason whatsoever.

For greater clarity the Designer shall not be liable, directly or indirectly, in any manner whatsoever by any party by reason of the use of the drawings and materials referred to Herein.

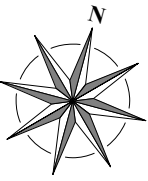
ISSUES		
NO.	DATE	DESCRIPTION
1	07/25/2013	ZONING APPLICATION
2	02/02/2016	AMENDED ISSUE FOR ZONING

NO.	DATE	DESCRIPTION
REVISIONS		



FORREST GROUP
ASSERTIVELY GREEN

We Merchandise Space Inc.
590 Alden Road, Suite 211 Markham, Ont. L3R 8N2
Tel. 905.752.6776 Fax. 905 752 6781
www.forrestgroup.ca



CLIENT:

MAIN STREET CLOCK INC.

PROJECT:

**PROPOSED
CLOCK TOWER REDEVELOPMENT
NEWMARKET, ONTARIO**

DRAWING:

7th Floor (Penthouse)

Designer:	Project number:	DRAWING NO:
PR	6392	A6a
Drawn by:	Date:	
FM	JUNE 2015	
Checked by:	SCALE:	
PR	1 : 125	



We Merchandise Space Inc., and The Forrest Group are collectively, referred to as the Designer.

This drawing, as an instrument of service, is provided by and is the property of the Designer.

The Contractor must verify and accept responsibility for all dimensions and conditions on site and must notify the Designer of any variations from the supplied information.

This drawing is not to be scaled.

The Designer is not responsible for the accuracy of survey, mechanical, electrical, etc., information shown on this drawing. Refer to the appropriate Consultant's drawings before proceeding with the work.

Construction must conform to all applicable codes and requirements of authorities having jurisdiction.

The Contractor working from drawings not specifically marked 'For Construction' must assume full responsibility and bear costs for any corrections or damages resulting from his work.

The Designer retains ownership of copyright in all drawings. You are granted a license to construct, reproduce, distribute, exhibit or otherwise use, said materials, which licence may be revoked for cause, including but not limited to, misuse of drawings or failure to pay accounts.

It is expressly understood and agreed that no action, lawsuit, or claim may be made against the employees, officers, or directors of We Merchandise Space Inc., and The Forrest Group for any reason whatsoever.

For greater clarity the Designer shall not be liable, directly or indirectly, in any manner whatsoever by any party by reason of the use of the drawings and materials referred to Herein.

ISSUES

[illegible]

NO.	DATE	DESCRIPTION
-----	------	-------------

REVISIONS



We Merchandise Space Inc.
590 Alden Road, Suite 211 Markham, Ont. L3R 8N2
Tel. 905.752.6776 Fax. 905 752 6781
www.forrestgroup.ca

CLIENT:

MAIN STREET CLOCK INC.

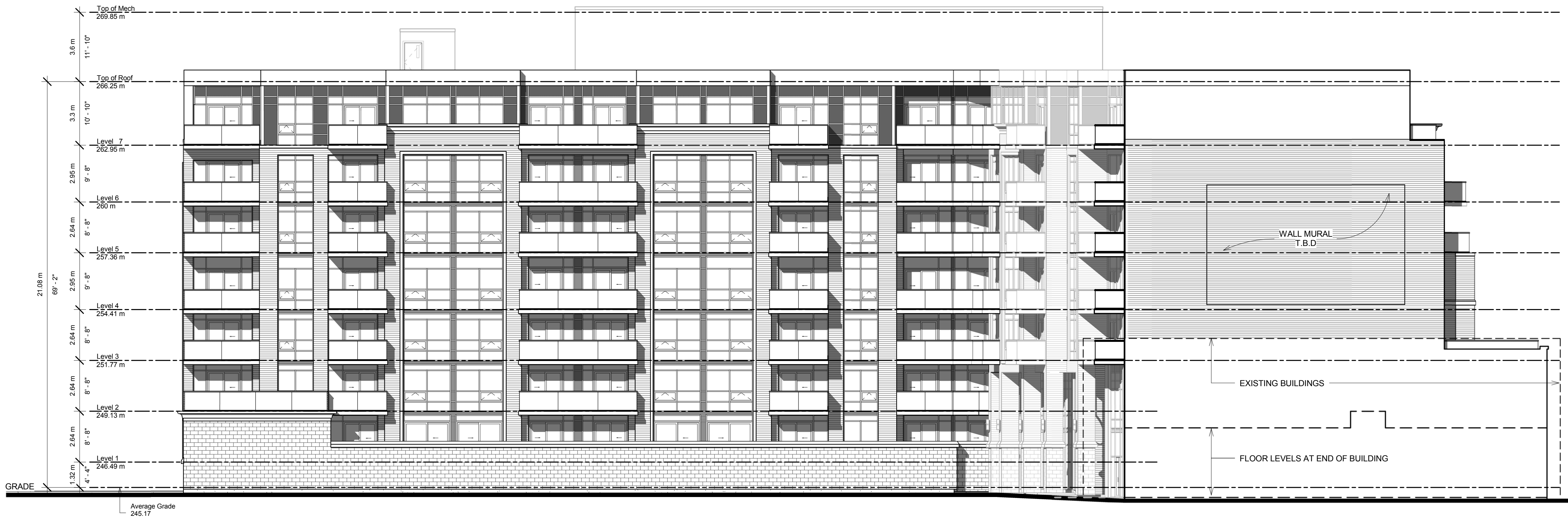
PROJECT:

PROJECT: **PROPOSED
CLOCK TOWER REDEVELOPMENT
NEWMARKET, ONTARIO**

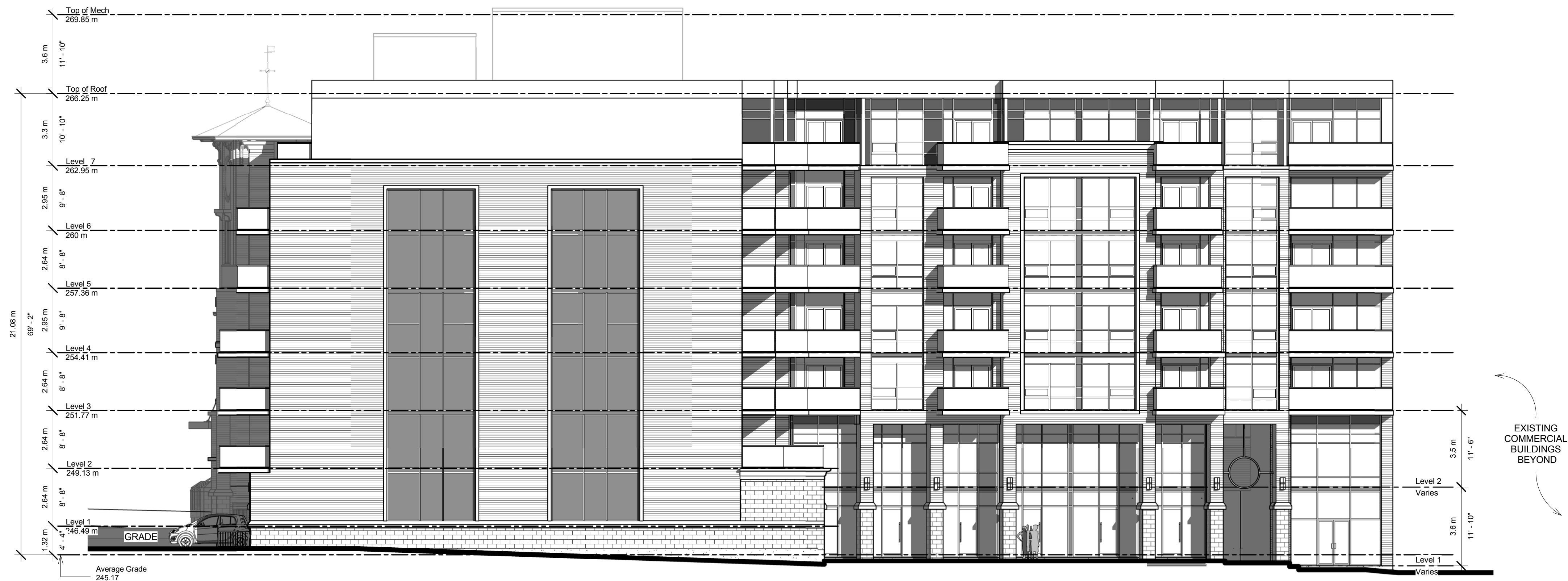
DRAWING:

MAIN STREET ELEVATION & PARK AVENUE ELEVATION

Designer: PR	Project number: 6392	DRAWING NO: A9
Drawn by: FM	Date: JUNE 2015	
Checked by: PR	SCALE: 1 : 125	



① MARKET SQUARE - SOUTH ELEVATION
1 : 125



② MARKET SQUARE - WEST ELEVATION
1 : 125

We Merchandise Space Inc., and The Forrest Group are collectively, referred to as the Designer.

This drawing, as an instrument of service, is provided by and is the property of the Designer.

The Contractor must verify and accept responsibility for all dimensions and conditions on site and must notify the Designer of any variations from the supplied information.

This drawing is not to be scaled.

The Designer is not responsible for the accuracy of survey, mechanical, electrical, etc., information shown on this drawing. Refer to the appropriate Consultant's drawings before proceeding with the work.

Construction must conform to all applicable codes and requirements of authorities having jurisdiction.

The Contractor working from drawings not specifically marked 'For Construction' must assume full responsibility and bear costs for any corrections or damages resulting from his work.

The Designer retains ownership of copyright in all drawings. You are granted a license to construct, reproduce, distribute, exhibit or otherwise use, said materials, which license may be revoked for cause, including but not limited to, misuse of drawings or failure to pay accounts.

It is expressly understood and agreed that no action, lawsuit, or claim may be made against the employees, officers, or directors of We Merchandise Space Inc., and The Forrest Group for any reason whatsoever.

For greater clarity the Designer shall not be liable, directly or indirectly, in any manner whatsoever by any party by reason of the use of the drawings and materials referred to herein.

ISSUES

NO.	DATE	DESCRIPTION
1	07/25/2013	ZONING APPLICATION
2	02/02/2016	AMENDED ISSUE FOR ZONING

NO. DATE DESCRIPTION

REVISIONS



We Merchandise Space Inc.
590 Alden Road, Suite 211 Markham, Ont. L3R 8N2
Tel. 905.752.6776 Fax. 905.752.6781
www.forrestgroup.ca

CLIENT:

MAIN STREET CLOCK INC.

PROJECT:

PROPOSED
CLOCK TOWER REDEVELOPMENT
NEWMARKET, ONTARIO

DRAWING:

SOUTH & WEST
MARKET SQUARE ELEVATIONS

Designer:

Project number:
PR 6392

DRAWING NO:

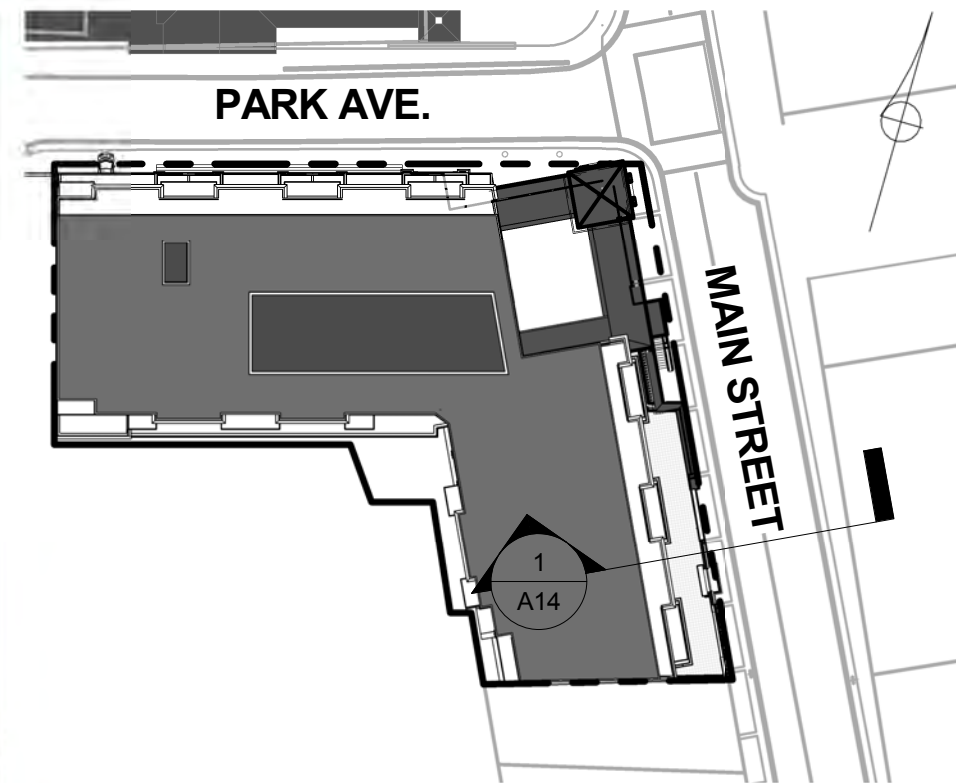
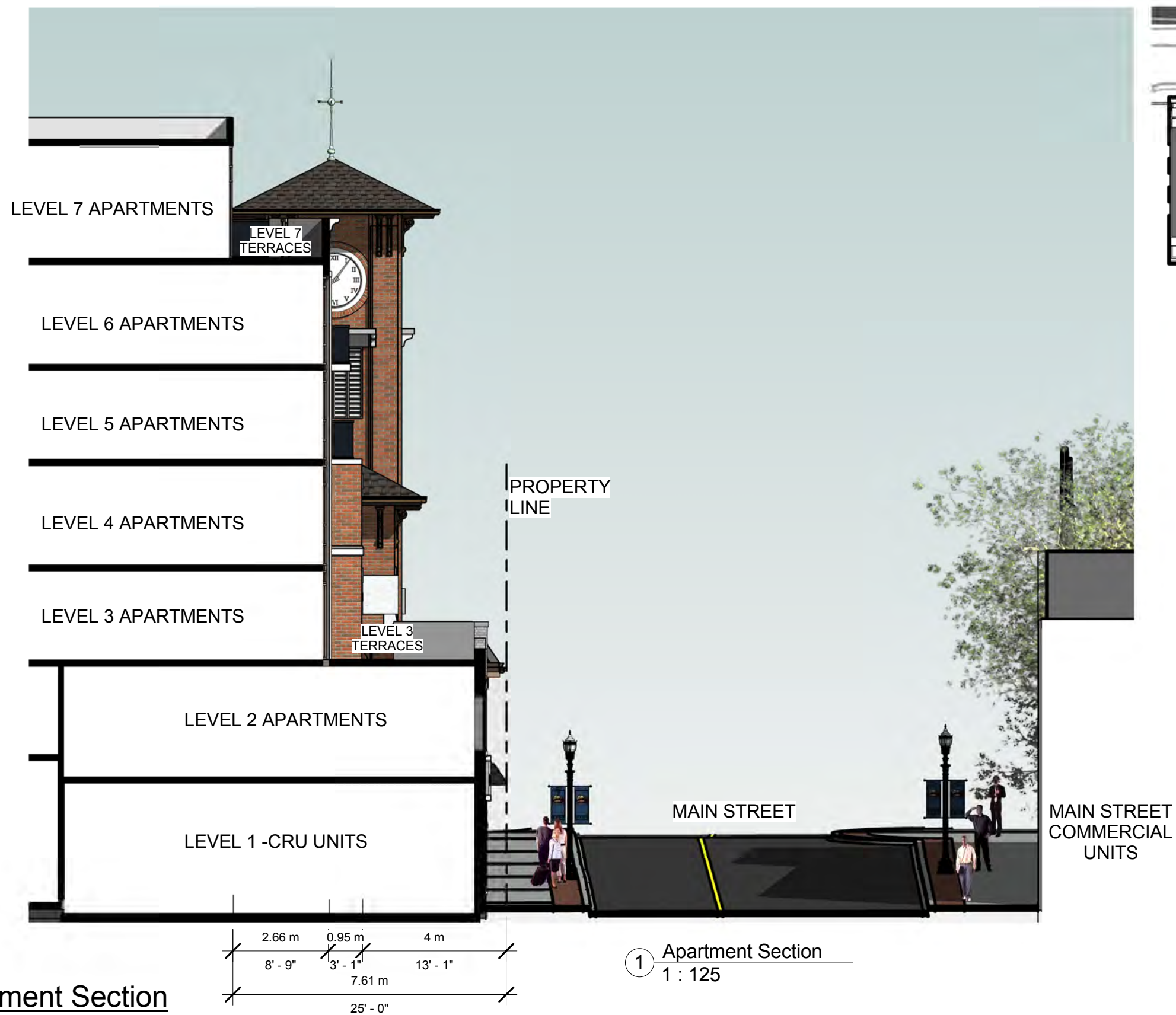
Drawn by:

FM JUNE 2015

Checked by:

PR SCALE: 1 : 125

A10



② KEY PLAN 1
1 : 800

① Apartment Section
1 : 125

Version 1.0

A-14 Apartment Section

PROPOSED 7 STOREY CLOCK TOWER REDEVELOPMENT

Client: MAIN STREET CLOCK INC.

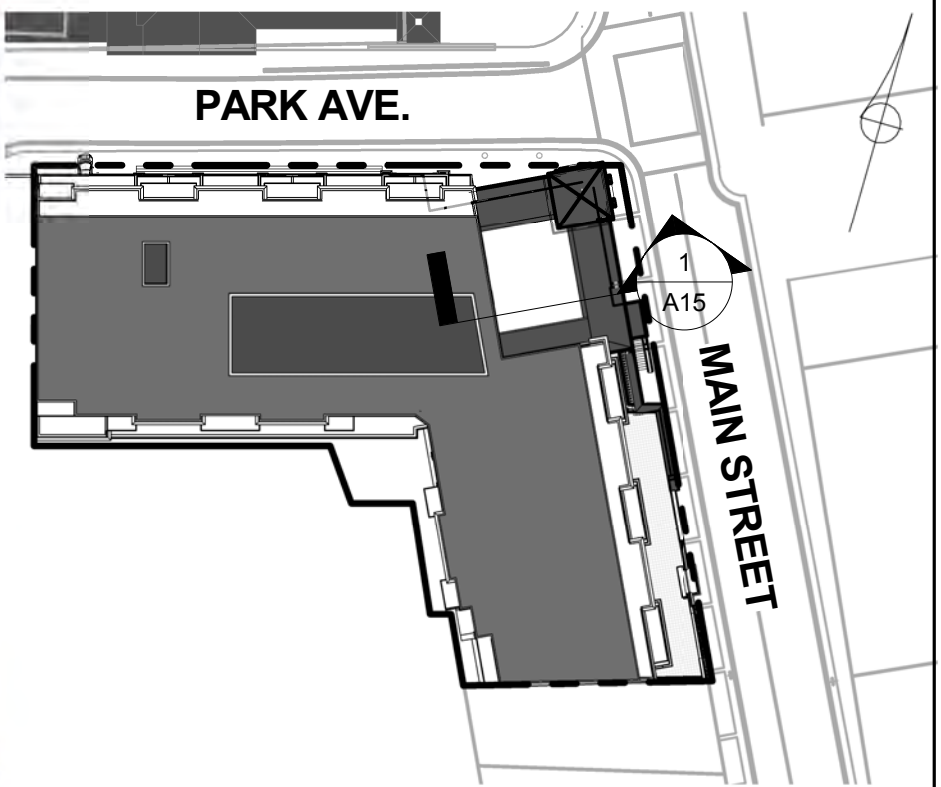
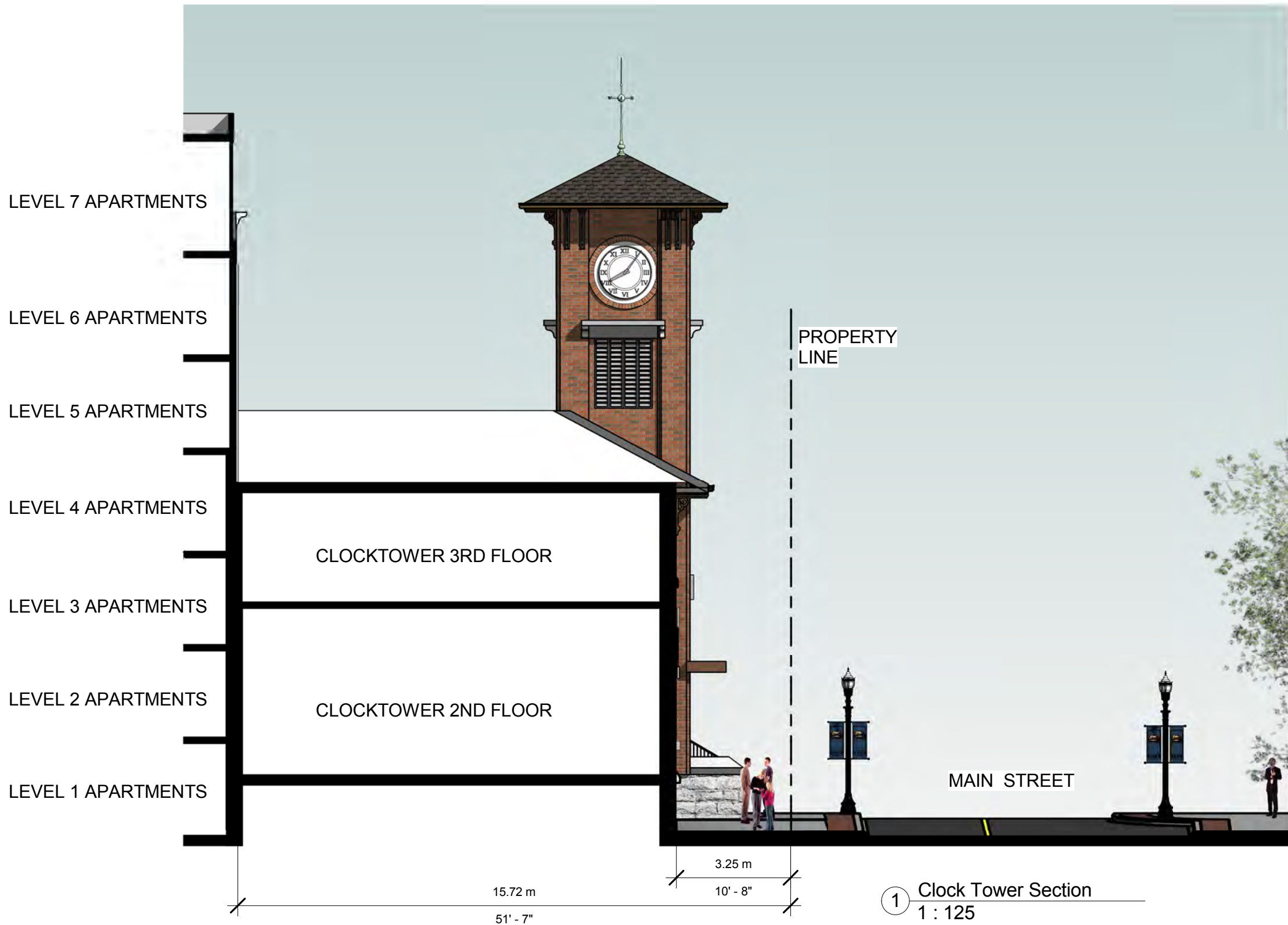
Date: 16/02/02 - NO. 2 AMENDED ISSUE FOR ZONING

Project number: 6392 Scale: As indicated



We Merchandise Space Inc.

www.forrestgroup.ca



② KEY PLAN 2
1 : 800

① Clock Tower Section
1 : 125

Version 1.0
A-15 Clock Tower Section
PROPOSED 7 STOREY CLOCK TOWER REDEVELOPMENT

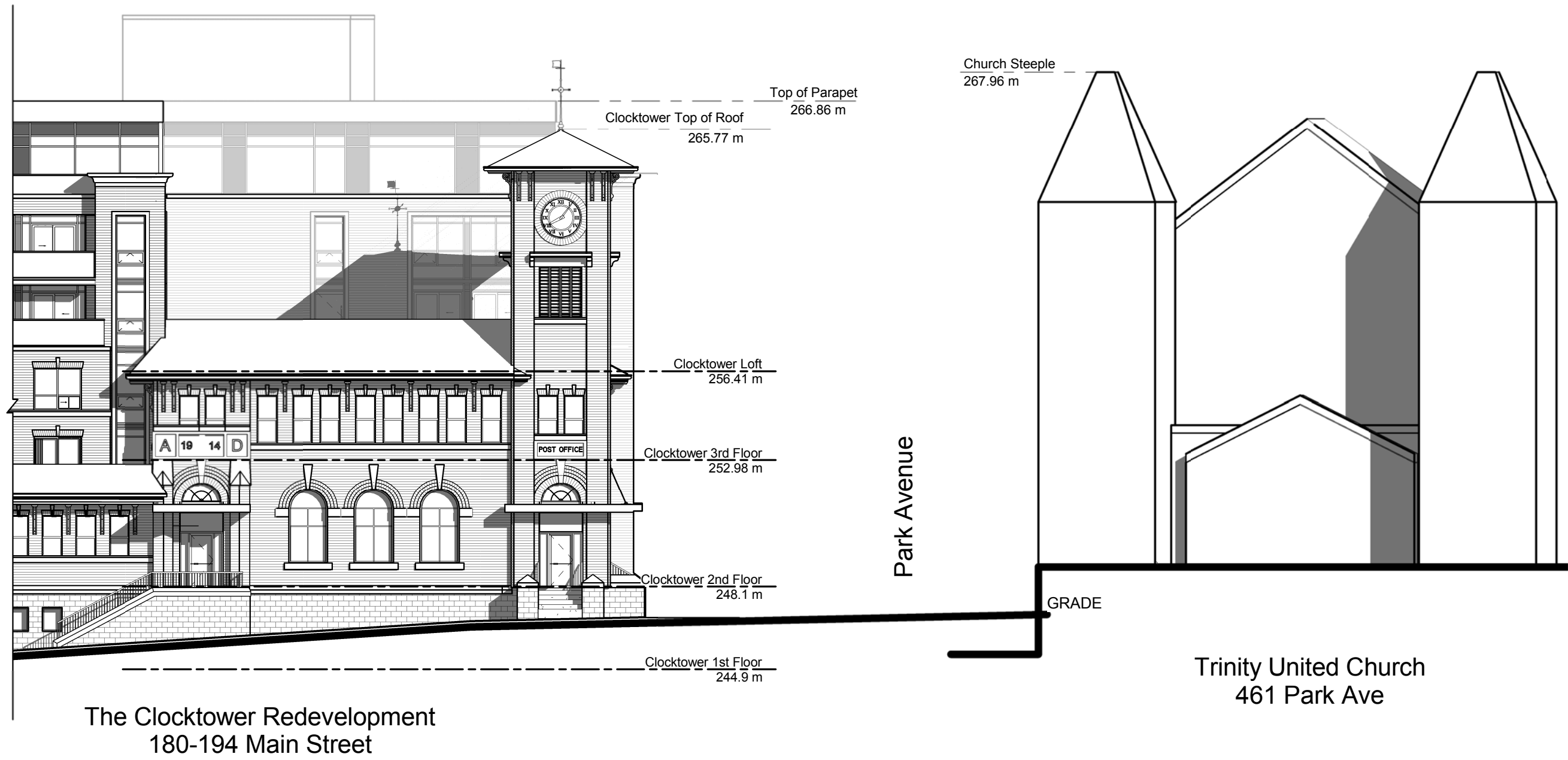
Client: MAIN STREET CLOCK INC.
Date: 16/02/02 - NO. 2 AMENDED ISSUE FOR ZONING
Project number: 6392 Scale: As indicated



We Merchandise Space Inc.
www.forrestgroup.ca

We Merchandise Space Inc., and The Forrest Group are collectively, referred to as the Designer. This drawing, is provided by and is the property of the Designer. The Designer is not responsible for the accuracy of survey. The Designer retains ownership of copyright in all drawings. You are granted a license to reproduce, distribute, exhibit or otherwise use, said materials, which licence may be revoked for cause, including but not limited to, misuse of drawings or failure to pay accounts. It is expressly understood and agreed that no action, lawsuit, or claim may be made against the employees, officers, or directors of We Merchandise Space Inc., and The Forrest Group for any reason whatsoever. For greater clarity the Designer shall not be liable, directly or indirectly, in any manner whatsoever by any party by reason of the use of the drawings and materials referred to herein.

TOP OF PARAPET FOR THE PROPOSED DEVELOPMENT IS 1M BELOW
THE NEIGHBOURING CHURCH STEEPLE.



Version 1.0
A-16 HEIGHT STUDY

PROPOSED CLOCK TOWER REDEVELOPMENT
NEWMARKET, ONTARIO
Client: MAIN STREET CLOCK INC.
Date: 16/02/02 - NO. 2 AMENDED ISSUE FOR ZONING
Project number: 6392 Scale: 1 : 175

FORREST GROUP
ASSERTIVELY GREEN
We Merchandise Space Inc.
www.forrestgroup.ca

We Merchandise Space Inc., and The Forrest Group are collectively, referred to as the Designer. This drawing, is provided by and is the property of the Designer. The Designer is not responsible for the accuracy of survey. The Designer retains ownership of copyright in all drawings. You are granted a license to reproduce, distribute, exhibit or otherwise use, said materials, which licence may be revoked for cause, including but not limited to, misuse of drawings or failure to pay accounts. It is expressly understood and agreed that no action, lawsuit, or claim may be made against the employees, officers, or directors of We Merchandise Space Inc., and The Forrest Group for any reason whatsoever. For greater clarity the Designer shall not be liable, directly or indirectly, in any manner whatsoever by any party by reason of the use of the drawings and materials referred to herein.



We Merchandise Space Inc., and The Forrest Group are collectively, referred to as the Designer.

This drawing, as an instrument of service, is provided by and is the property of the Designer.

The Contractor must verify and accept responsibility for all dimensions and conditions on site and must notify the Designer of any variations from the supplied information.

This drawing is not to be scaled.

The Designer is not responsible for the accuracy of survey, mechanical, electrical, etc., information shown on this drawing. Refer to the appropriate Consultant's drawings before proceeding with the work.

Construction must conform to all applicable codes and requirements of authorities having jurisdiction.

The Contractor working from drawings not specifically marked "For Construction" must assume full responsibility and bear costs for any corrections or damages resulting from his work.

The Designer retains ownership of copyright in all drawings. You are granted a license to construct, reproduce, distribute, exhibit or otherwise use, said materials, which licence may be revoked for cause, including but not limited to, misuse of drawings or failure to pay accounts.

It is expressly understood and agreed that no action, lawsuit, or claim may be made against the employees, officers, or directors of We Merchandise Space Inc., and The Forrest Group for any reason whatsoever.

For greater clarity the Designer shall not be liable, directly or indirectly, in any manner whatsoever by any party by reason of the use of the drawings and materials referred to Herein.

ISSUES		
NO.	DATE	DESCRIPTION
1	07/25/2013	ZONING APPLICATION
2	02/02/2016	AMENDED ISSUE FOR ZONING
NO. DATE DESCRIPTION		
REVISIONS		



FORREST GROUP
ASSERTIVELY GREEN

We Merchandise Space Inc.
590 Alden Road, Suite 211 Markham, Ont. L3R 8N2
Tel. 905.752.6776 Fax. 905 752 6781
www.forrestgroup.ca

CLIENT: MAIN STREET CLOCK INC.		
PROJECT: PROPOSED CLOCK TOWER REDEVELOPMENT NEWMARKET, ONTARIO		
DRAWING: View from Market Square		
Designer: Designer	Project number: 6392	DRAWING NO: R2
Drawn by: Author	Date: JUNE 2015	
Checked by: Checker	SCALE:	



We Merchandise Space Inc., and The Forrest Group are collectively, referred to as the Designer.

This drawing, as an instrument of service, is provided by and is the property of the Designer.

The Contractor must verify and accept responsibility for all dimensions and conditions on site and must notify the Designer of any variations from the supplied information.

This drawing is not to be scaled.

The Designer is not responsible for the accuracy of survey, mechanical, electrical, etc., information shown on this drawing. Refer to the appropriate Consultant's drawings before proceeding with the work.

Construction must conform to all applicable codes and requirements of authorities having jurisdiction.

The Contractor working from drawings not specifically marked "For Construction" must assume full responsibility and bear costs for any corrections or damages resulting from his work.

The Designer retains ownership of copyright in all drawings. You are granted a license to construct, reproduce, distribute, exhibit or otherwise use, said materials, which licence may be revoked for cause, including but not limited to, misuse of drawings or failure to pay accounts.

It is expressly understood and agreed that no action, lawsuit, or claim may be made against the employees, officers, or directors of We Merchandise Space Inc., and The Forrest Group for any reason whatsoever.

For greater clarity the Designer shall not be liable, directly or indirectly, in any manner whatsoever by any party by reason of the use of the drawings and materials referred to Herein.

ISSUES		
NO.	DATE	DESCRIPTION
1	07/25/2013	ZONING APPLICATION
2	02/02/2016	AMENDED ISSUE FOR ZONING
NO. DATE DESCRIPTION		
REVISIONS		



FORREST GROUP
ASSERTIVELY GREEN

We Merchandise Space Inc.
590 Alden Road, Suite 211 Markham, Ont. L3R 8N2
Tel. 905.752.6776 Fax. 905 752 6781
www.forrestgroup.ca

CLIENT: MAIN STREET CLOCK INC.		
PROJECT: PROPOSED CLOCK TOWER REDEVELOPMENT NEWMARKET, ONTARIO		
DRAWING: Park Avenue		
Designer: Designer	Project number: 6392	DRAWING NO: R3
Drawn by: Author	Date: JUNE 2015	
Checked by: Checker	SCALE:	



We Merchandise Space Inc., and The Forrest Group are collectively, referred to as the Designer.

This drawing, as an instrument of service, is provided by and is the property of the Designer.

The Contractor must verify and accept responsibility for all dimensions and conditions on site and must notify the Designer of any variations from the supplied information.

This drawing is not to be scaled.

The Designer is not responsible for the accuracy of survey, mechanical, electrical, etc., information shown on this drawing. Refer to the appropriate Consultant's drawings before proceeding with the work.

Construction must conform to all applicable codes and requirements of authorities having jurisdiction.

The Contractor working from drawings not specifically marked "For Construction" must assume full responsibility and bear costs for any corrections or damages resulting from his work.

The Designer retains ownership of copyright in all drawings. You are granted a license to construct, reproduce, distribute, exhibit or otherwise use, said materials, which licence may be revoked for cause, including but not limited to, misuse of drawings or failure to pay accounts.

It is expressly understood and agreed that no action, lawsuit, or claim may be made against the employees, officers, or directors of We Merchandise Space Inc., and The Forrest Group for any reason whatsoever.

For greater clarity the Designer shall not be liable, directly or indirectly, in any manner whatsoever by any party by reason of the use of the drawings and materials referred to Herein.

ISSUES		
NO.	DATE	DESCRIPTION
1	07/25/2013	ZONING APPLICATION
2	02/02/2016	AMENDED ISSUE FOR ZONING
NO. DATE DESCRIPTION		
REVISIONS		



FORREST GROUP
ASSERTIVELY GREEN

We Merchandise Space Inc.
590 Alden Road, Suite 211 Markham, Ont. L3R 8N2
Tel. 905.752.6776 Fax. 905 752 6781
www.forrestgroup.ca

CLIENT: MAIN STREET CLOCK INC.		
PROJECT: PROPOSED CLOCK TOWER REDEVELOPMENT NEWMARKET, ONTARIO		
DRAWING: NW Corner of Water St. & Prospect St.		
Designer: Designer	Project number: 6392	DRAWING NO: R6
Drawn by: Author	Date: JUNE 2015	
Checked by: Checker	SCALE:	



We Merchandise Space Inc., and The Forrest Group are collectively, referred to as the Designer.

This drawing, as an instrument of service, is provided by and is the property of the Designer.

The Contractor must verify and accept responsibility for all dimensions and conditions on site and must notify the Designer of any variations from the supplied information.

This drawing is not to be scaled.

The Designer is not responsible for the accuracy of survey, mechanical, electrical, etc., information shown on this drawing. Refer to the appropriate Consultant's drawings before proceeding with the work.

Construction must conform to all applicable codes and requirements of authorities having jurisdiction.


The Contractor working from drawings not specifically marked "For Construction" must assume full responsibility and bear costs for any corrections or damages resulting from his work.

The Designer retains ownership of copyright in all drawings. You are granted a license to construct, reproduce, distribute, exhibit or otherwise use, said materials, which licence may be revoked for cause, including but not limited to, misuse of drawings or failure to pay accounts.

It is expressly understood and agreed that no action, lawsuit, or claim may be made against the employees, officers, or directors of We Merchandise Space Inc., and The Forrest Group for any reason whatsoever.

For greater clarity the Designer shall not be liable, directly or indirectly, in any manner whatsoever by any party by reason of the use of the drawings and materials referred to Herein.

ISSUES		
NO.	DATE	DESCRIPTION
1	07/25/2013	ZONING APPLICATION
2	02/02/2016	AMENDED ISSUE FOR ZONING
NO. DATE DESCRIPTION		
REVISIONS		



FORREST GROUP
ASSERTIVELY GREEN

We Merchandise Space Inc.
590 Alden Road, Suite 211 Markham, Ont. L3R 8N2
Tel. 905.752.6776 Fax. 905 752 6781
www.forrestgroup.ca

CLIENT: MAIN STREET CLOCK INC.		
PROJECT: PROPOSED CLOCK TOWER REDEVELOPMENT NEWMARKET, ONTARIO		
DRAWING: Church St. & Park Ave		
Designer: Designer	Project number: 6392	DRAWING NO: R9
Drawn by: Author	Date: JUNE 2015	
Checked by: Checker	SCALE:	



We Merchandise Space Inc., and The Forrest Group are collectively, referred to as the Designer.

This drawing, as an instrument of service, is provided by and is the property of the Designer.

The Contractor must verify and accept responsibility for all dimensions and conditions on site and must notify the Designer of any variations from the supplied information.

This drawing is not to be scaled.

The Designer is not responsible for the accuracy of survey, mechanical, electrical, etc., information shown on this drawing. Refer to the appropriate Consultant's drawings before proceeding with the work.

Construction must conform to all applicable codes and requirements of authorities having jurisdiction.

The Contractor working from drawings not specifically marked "For Construction" must assume full responsibility and bear costs for any corrections or damages resulting from his work.

The Designer retains ownership of copyright in all drawings. You are granted a license to construct, reproduce, distribute, exhibit or otherwise use, said materials, which licence may be revoked for cause, including but not limited to, misuse of drawings or failure to pay accounts.

It is expressly understood and agreed that no action, lawsuit, or claim may be made against the employees, officers, or directors of We Merchandise Space Inc., and The Forrest Group for any reason whatsoever.

For greater clarity the Designer shall not be liable, directly or indirectly, in any manner whatsoever by any party by reason of the use of the drawings and materials referred to Herein.

ISSUES		
NO.	DATE	DESCRIPTION
1	07/25/2013	ZONING APPLICATION
2	02/02/2016	AMENDED ISSUE FOR ZONING
NO. DATE DESCRIPTION		
REVISIONS		



FORREST GROUP
ASSERTIVELY GREEN

We Merchandise Space Inc.
590 Alden Road, Suite 211 Markham, Ont. L3R 8N2
Tel. 905.752.6776 Fax. 905 752 6781
www.forrestgroup.ca

CLIENT: MAIN STREET CLOCK INC.		
PROJECT: PROPOSED CLOCK TOWER REDEVELOPMENT NEWMARKET, ONTARIO		
DRAWING: View Main Street North Looking South 1		
Designer: Designer	Project number: 6392	DRAWING NO: R10
Drawn by: Author	Date: JUNE 2015	
Checked by: Checker	SCALE:	