



Council Workshop Mulock Property

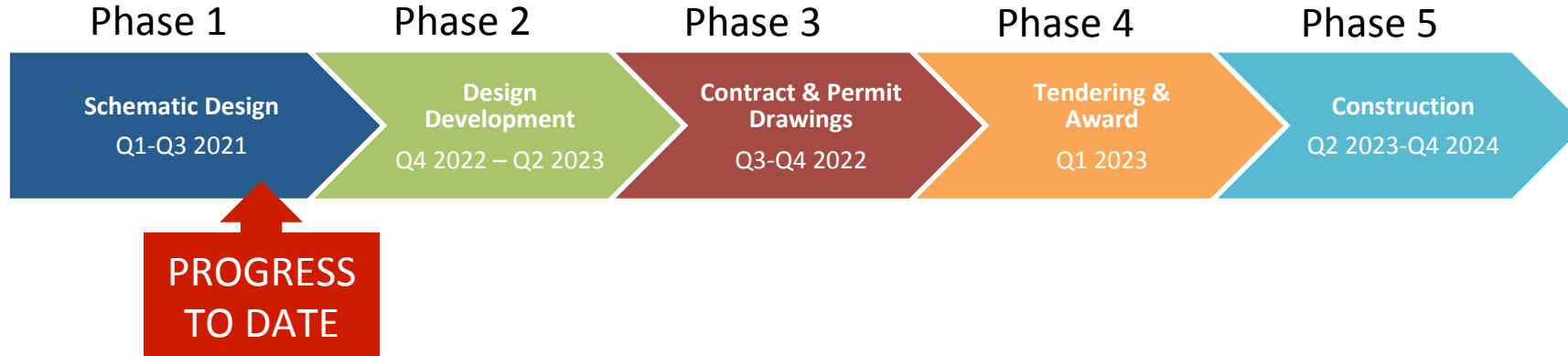
Peter Noehammer & Bill White
Development & Infrastructure Services
October 19, 2021

Workshop Topics

- Key consultation
- Further site investigations
- Site plan schematic design progress
- Key schematic design features
- Questions and next steps

Several pauses will be provided for questions.

Present Status



- Schematic design near completion.
- Public Information Centre tentatively late November or early December 2021.

Consultant Introduction

- Lisa Rapoport, OAA, FRAIC
PLANT Architect Inc.
- Rebecca Carbin, MA
Art + Public Unltd



MULOCK PROPERTY

Council Workshop
October 19, 2021

P L A N T

ARCHITECT INC.

Mulock Dr

Jordanray Blvd

Jordanray Blvd

nozel Cres

Jordanray Blvd

Osler Crt

Agenda

6

Public Consultation Plan

Art Plan

Site Findings

- Ecological
- Archaeological

Site Plan Updates

Detail Plan Updates

- Bridge/Riverine Fountain
- House access landscape
- Skate Pavilion
- Maintenance Building

Questions/Next Steps

Consultant team

7

- Architecture and Landscape Architecture – PLANT Architect Inc.
- Heritage – GBCA
- Public Consultation/ Indigenous – PROCESS
- Civil – Walter Fedy
- Fountain – Dew Inc
- Ice – Custom Ice Inc
- Lighting/ Communications IT/ Security– Mulvey and Banani (MBL and MBII)
- Costing – A.W. Hooker
- Movement/Traffic – BA Group
- Code – CodeNext
- AM Archaeology Associates
- New members of the TEAM:
- Structural Engineering – Blackwell and Associates
- Mechanical/Electrical – Crossey Engineering
- Geotechnical – Soils Engineering
- Ecology/Arborist– Dougan and Associates
- A+P Arts – Art consultancy
- Irrigation – CSI
- Specs – Specifx

Public Consultations

Mulock Phase 2 - Implementation Consultation Objectives and Tactics

August 12 2021
Updated October 8 2021



Objectives

10

1. **Continue to share the process and project that is already underway;**
2. **Continue to build community capacity and sense of stewardship** over (by gaining buy-in and growing enthusiasm amongst local neighbours and the Town more broadly);
3. **Collect feedback and focus on what's in scope and open for influence;**
4. **Prioritize Indigenous engagement with First Nations and urban Indigenous community;**
5. **Focus on making the public engagement process more equitable** (consider target audiences and groups typically not engaged such as equity deserving communities; and
6. Demonstrate **transparency and accountability** throughout the project.

Key Questions to Explore

11

Establish what's open for influence and questions for engagement moving into implementation.

Key themes to consider:

- Public art
- Building, landscape design and programming
 - Indigenous placekeeping and stewardship
 - Ecological restoration
 - Diverse garden opportunities
- Construction, phasing and noise
- Environmental considerations
- Inclusive and equitable opportunities
- Diverse perspectives on safety

Who to Engage:

- General Public, with focus on diverse residents and perspectives
- Indigenous involvement and partnerships
- Potential Partners (public art, gardens, etc.)

Engagement Tactics- Focus Groups

12

Description	Objectives (Key Questions for Engagement / Level of engagement)	Timeline
Diverse Thinkers and Local Resident Working Group	<p>Include a range of residents, diverse thinkers and/or potential partners (to support continued relationship building, support, and feedback).</p> <p>Revisit 'Diverse Thinkers' and 'Local Residents' Working Groups for attendees.</p>	November 2021
Exploratory Garden Focus Group and Interviews	<p>Exploration with potential partners to learn about and discuss possible opportunities for thematic gardens and partnerships, both within Newmarket and outside of the Town.</p> <p>Discussion 1: Local Newmarket Groups</p> <p>Discussion 2: Explorations and research with broader partners</p>	November 2021

Engagement Tactics - Broader Public Engagement

13

Description	Objectives (Key Questions for Engagement / Level of engagement)	Timeline
Facilitation of PICs (x2)	Share detailed design with the public and request feedback, likely through Facebook Live event. Develop outreach techniques that reach diverse residents and partners, beyond ‘the usual suspects’.	Early December
Website and content support	PROCESS to work with the Communications team to support website and social media updates in order to keep residents and community members informed, engaged and excited about the project.	Late October - Ongoing

Engagement Tactics - Indigenous Engagement

14

Description	Objectives (Key Questions for Engagement / Level of engagement)	Timeline
Indigenous Engagement and Design	<p>Meet with Indigenous engagement experts to develop a meaningful approach to consultation.</p> <p>Begin initial conversations relationships with nearby First Nations communities, specifically Chief Big Canoe of the Chippewas of Georgina Island to understand their interest and ideas for the Mulock Property.</p> <p>Invite local Indigenous artists, gardeners and educators to discuss the project and explore potential social procurement opportunities.</p> <p>Consider a 'First Nations Advisory Circle' (Parks Canada has developed a First Nations Advisory Circle as part of the development of Rouge Urban National Park). This could be established as an opportunity for longer-term relationship building with the Town.</p>	September 2021 - 2022

Engagement Tactics - Optional

Description	Objectives (Key Questions for Engagement / Level of engagement)	Timeline
Optional: Online Survey	<ul style="list-style-type: none">• Inclusive approach to engage people who cannot attend public meetings and working groups.	TBD
Optional: Creative passive or active Engagement on-site / storytelling	<ul style="list-style-type: none">• Pilot ideas on-site (re-launch picnic?) to keep the community engaged and excited, and collect data on how people experience the park as well as their ideas for the future.• Better understand experiences of the park	TBD

Questions

Art Plan

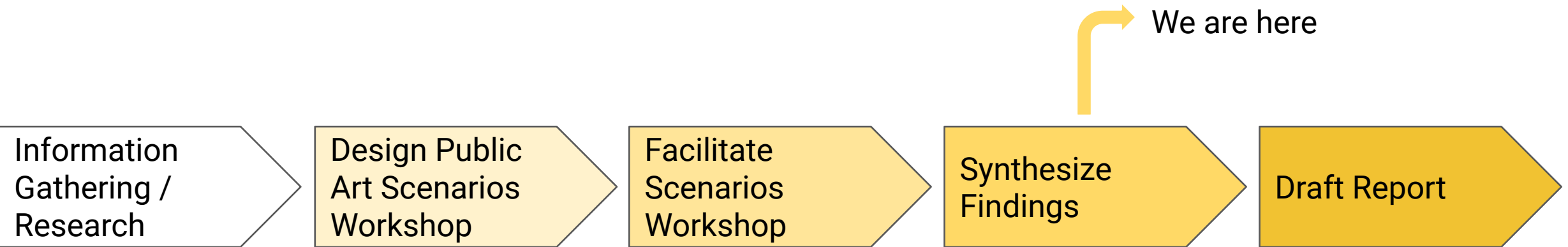
MULOCK PARK: Public Art Scenarios Council Workshop

10.19.21

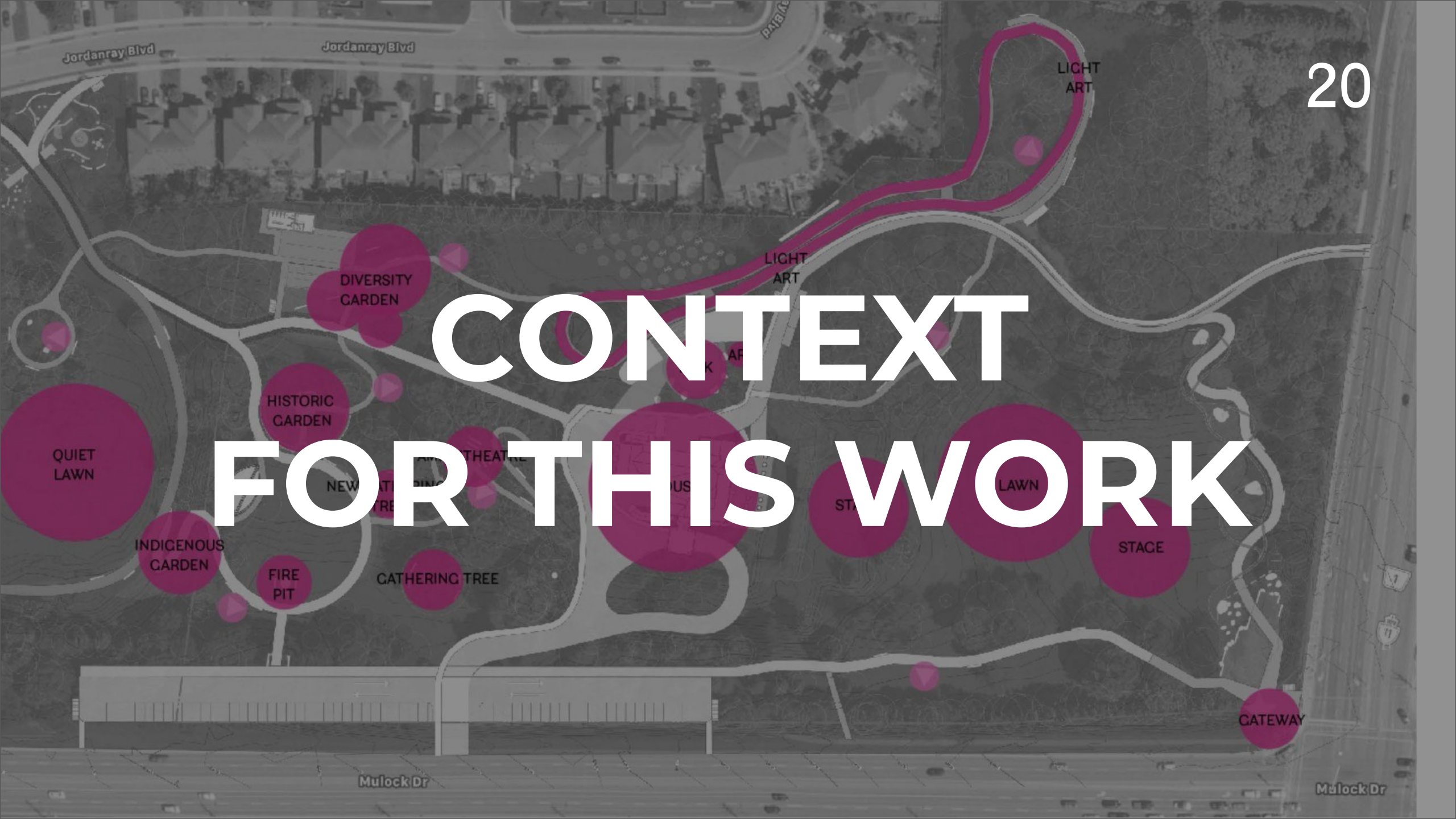
ART+PUBLIC UnLtd

Overview of Our Process

19



CONTEXT FOR THIS WORK



Two Public Art Program Fixtures

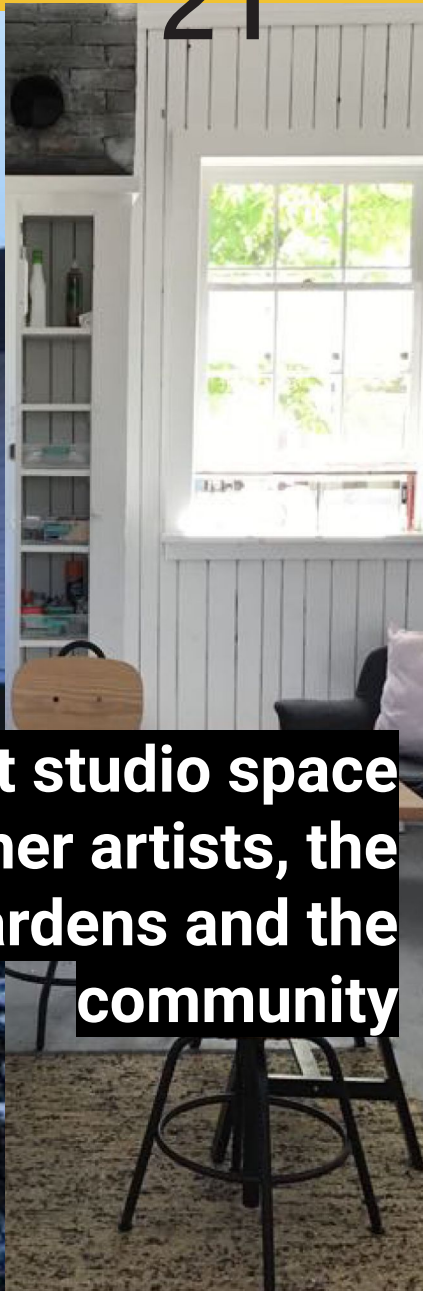
21



**A permanent artwork
(and bridge over wetlands)
near the entrance**



**An artist studio space
To bring together artists, the
historical gardens and the
community**



SCENARIOS WORKSHOP RECAP

13 Participants Across 2 Sessions

23

- **Colin Service**, Director of Recreation & Culture, Town of Newmarket
- **Kate Wivell**, Associate, Development, Toronto Biennial of Art
- **Laura Schembri**, Supervisor, Culture Services, Town of Newmarket
- **Linda Welch**, President of Society of York Region Artists
- **Lisa Dietrich**, Senior Associate, PLANT Architect Inc.
- **Lisa Rapoport**, Founding Partner, PLANT Architect Inc.
- **Lou Sheppard**, Artist
- **Mark Agnoletto**, Director of Public Works Services, Town of Newmarket
- **Penelope Kokkinos**, Art Centre Programmer: Community Galleries & Exhibition Spaces, Artist Studio Program, City of Ottawa
- **Rob Wilson**, Manager, Culture and Community Events, Town of Newmarket
- **Robin Burnett**, Artist
- **Ted Fullerton**, Artist
- **Tracy Cresswell**, Head of Marketing, Sponsorship & Special Events, Town of Newmarket

Format: 1.5 hr Scenarios Workshop

24

- Scenarios walkthrough
- Activity #1: Scenarios pros and cons
- Activity #2: Preferred scenarios

Goals for the workshops:

- Explore aspirations for Public Art at Mulock Park
- Create an opportunity to share ideas and work collaboratively
- Be creative, think big, and have fun

PUBLIC ART PROGRAM SCENARIOS

Living Library

Mulock bridges art and learning through production and hands-on experiences, creating greater access to art in the community. An Artist-in-Residence program brings an interdisciplinary mix of artists to Mulock in a sustained way. They share their practice, perform and/or exhibit, run workshops and perhaps design community engagement initiatives.

Keywords: *Educational, Hands-on, Artist-Led, Interactive*

Programming examples: Partnerships:

- Artist Residency
- Workshops with community members
- Artist talks
- Art camps
- Local galleries
- Archives (Newmarket Public Library)
- Indigenous Knowledge groups
- Museums (Elman W Campbell Museum, Aga Khan, AGO)

Precedents

26



**Artscape Gibraltar Point
Toronto Island**



**Critical Mass AiR
Port Hope, ON**



**Harbourfront Centre Craft & Design
Studios AiR
Toronto, ON**

Landmark Destination

Mulock is a destination for experiencing renowned artists' work. It becomes a tourist destination like other 'must-see' sites in the surrounding area. Major public art commissions by international artists attract global art and culture audiences.

Key words: *Established, revered, impressive, high-quality*

Programming examples:

- Permanent sculpture
- Temporary exhibition space and program
- Artist Talks

Partnerships:

- Town of Newmarket
- Local development community
- Local galleries
- MOCA
- Foundations

Precedents

27



Face of Liberty, Zachary Landsberg, Governor's Island Interactive Sculpture Garden



Digital Orca, Douglas Coupland Vancouver



Love, Robert Indiana New York City

Social Playground

Mulock is a platform for immersive, multi-discipline festival experiences that span all 4 seasons. The events-based program focus creates spectacles and opportunities for social connection. The calendar of happenings drive audiences back to the site, time and time again.

Key words: *Fun, must-see, social, spectacle*

Programming examples:

- Winter light festival
- Outdoor Film Festival
- Musical performances
- Thematic temporary installations

Partnerships:

- Luminato
- Caribana
- Pride
- Winter Stations
- Reel Asian Film Festival

Precedents

28



Lumiere - Light Festival
London, UK



Winter Stations
Toronto



Deer Valley Concert Series
Utah

Landscape Oasis

Mulock is a place to escape to, a retreat. Renowned artists work to create site-specific land or earth art utilizing natural materials and enhancing the beauty of the site. Permanent commissions work directly with the landscape and temporary works are embedded in the landscape. The program is sustainable and ecologically conscious.

Keywords: *Naturalistic, temporal, sustainable*

Programming examples:

- Land art permanent commission
- Land art exhibition
- Temporary installations
- Small, intimate performances
- Storytelling events
- Art camp

Partnerships:

- Jardin Métis
- Botanical gardens for touring exhibitions such as Brooklyn Botanic Garden
- Toronto Biennial of Art
- Evergreen Brickworks

Precedents

29



VanDusen Gardens (Vancouver)



**Pamela Callender - artist
"Grass Braiding"**



**Patrick Dougherty - artist
Stick structures**

Innovation Lab

Mulock creates opportunities for new technologies and natural sciences to merge through art. New media art is celebrated such as video, audio, light projection and sound-based works. The program is dynamic and ever-changing. It's experimental and pushes the boundaries of public art and intersections between art, science and tech.

Keywords: *Futuristic, innovative, new, captivating*

Programming examples:

- Audio tours
- Augmented reality exhibition
- Sound installation
- Art project App
- Virtual workshops
- Robotics classes

Partnerships:


- Ontario Science Centre
- The ROM
- Vector Festival
- Interaccess

Precedents


30



Village of Islington, augmented reality tour
Arts Etobicoke, Toronto



WATERLICHT, Daan Roosegaarde
The Bentway



Site-specific sound compositions
(various artists)
Brooklyn Botanic Gardens, NY

LANDSCAPE OASIS

31

PROS

Very cohesive
purpose-driven
vision for site

lots of
changes
with
seasons

This would
make the
space stand
out as unique
and worthy of
driving to

foregrounds
the natural
environment

can be
exciting
and
unusual

could be a draw for
both local and
international artists
(varied scale of
projects)

exciting to think
about an art
program that is
made of the natural
materials of the
landscape

may require more
explanation/education
for people to
understand - this is an
interesting
opportunity

we could still
corporate
many of the
existing Library
concept. They
could blend.

wide variety of
potential partners:
horticultural,
natural history,
science, education,
indigenous insights
on land

could also
blend with
certain
landmark
pieces

Very "green"
which is of
interest to
Council.

could include
intergenerational
exchange and
mentorship

community
supported
idea

there would be
regional artists that
could step up this
way and appreciate
this opportunity

could be landmark
destination as well
(international and
art artists)

there are select
funders that are
deeply committed
to environmental
initiatives (few, but
fund deeply)

CONS

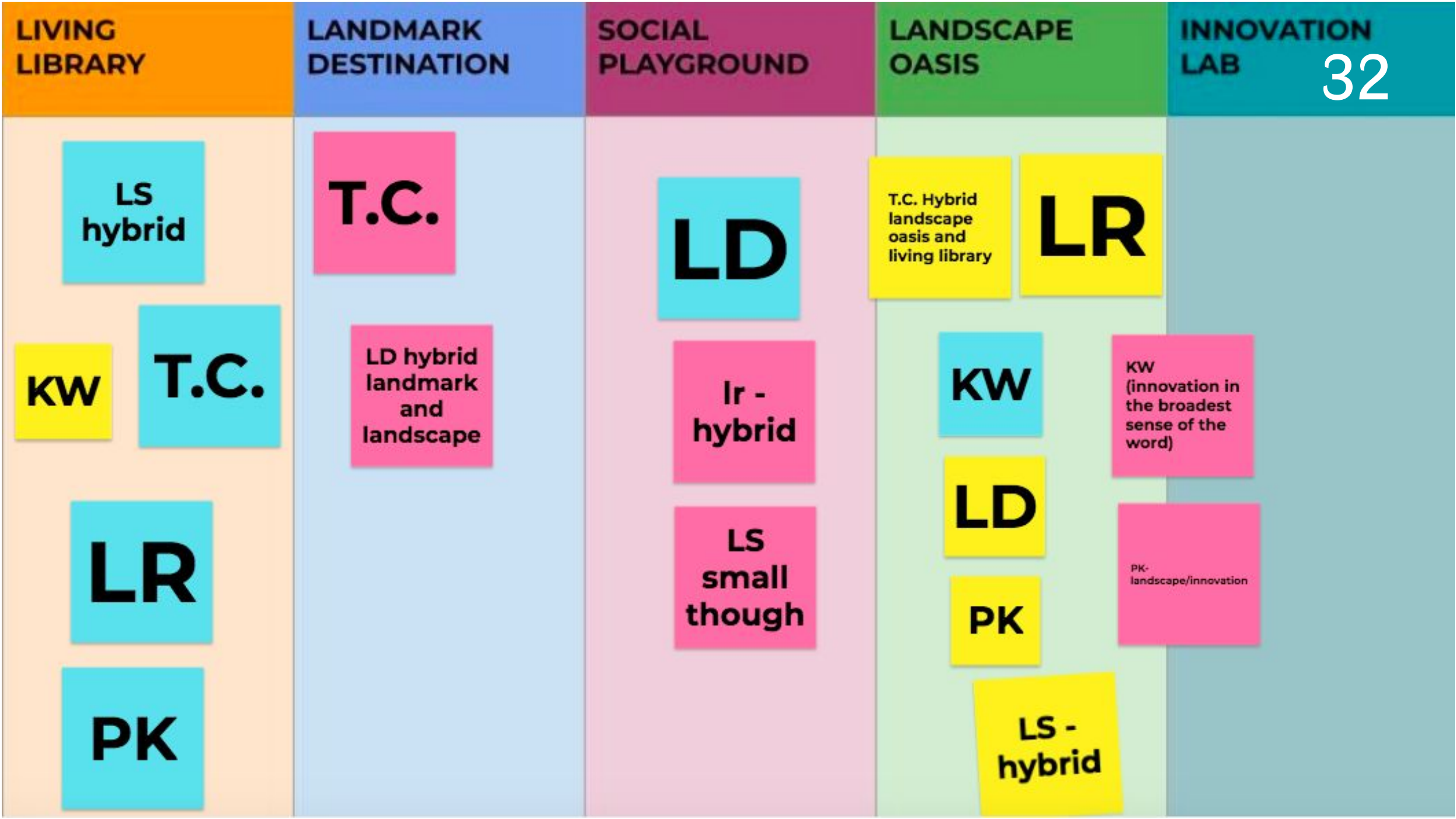
work is
ephemeral so
maybe harder
to get
funding?

how do
you set a
site up for
this?

does this typological
focus limit how
much local artists
may participate?
laura says hell no! it
is a great
opportunity

a lot of
maintenance?

work might be
difficult to
maintain (if
that's the
objective)



DRAFT INSIGHTS

1

**Create a dynamic
program that
focuses on the
landscape**

34

2

**Support the site's
destination factor**

3

36

**Embed innovation
in the program
approach**

4

**Connect with
local community
through
Artist-in-Residence
program**

37

5

38

**Bring together
a mix of local,
regional and
international artists**

Is there something you feel is important that's missing? What else needs to be carried forward in the next phase of our work?

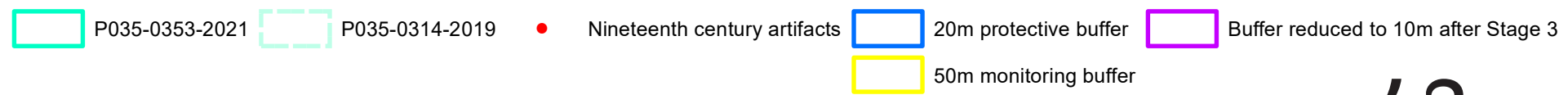
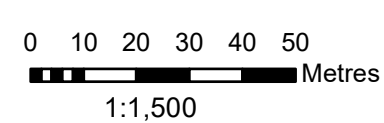
NEXT STEPS

Site Findings

Archaeological Findings & Next Steps

42





43

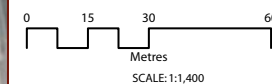


Soil Samples (D&A, 2021)

- A: Loam
- A: Silt Loam
- A: Silt Loam, B: Loam
- A: Silt Loam, B: Silt

- Silty loam to 60-70cm depth, little differentiation across site
- Did not hit water table at 70cm even at cattail marsh
- Quality of soil to support different types of plant communities – infiltration / moisture, soil composition tested

Orthoimagery Source: Maxar, Microsoft, Town of Oakville, Maxar



Disclaimer:
The information displayed on this map has been compiled from various sources. While every effort has been made to accurately depict the information, this map should not be relied on as being a precise indicator of locations, features, or roads, nor as a guide to navigation.



Ecology - plant findings

45

Notable native species:

- Field Pussytoes, Ivory Sedge or Bristle-leaved Sedge
- Calico Aster, Arrow-leaved Aster, Black Raspberry, Chokecherry



Ivory Sedge



Arrow-leaved Aster



Field Pussytoes



Field Pussytoes



Calico Aster



Black Raspberry

Ecology - plant findings

46

Problematic species -
invasive

- Lily-of-the-Valley
- Colt's Foot
- Garlic Mustard
- Garden escapees like
Lungwort

Problematic species with
bare feet!

- Bull thistle



Lungwort



Garlic Mustard



Colt's Foot (bottom left)

Ecological Findings

PLANT and DOUGAN & ASSOCIATES

Ecological Findings

48

- Main take-aways from site visit
 - Mature vegetation is an asset but also a liability (age of trees, maintenance)
 - Some canopy and understory is invasive and/or introduced species (Norway maple, Norway spruce, honeysuckle, buckthorn, European mountain-ash etc.)
 - This is a remnant anthropogenic landscape (little 'natural' ecology)
 - Ground cover is ecologically impoverished, but a big opportunity as it is a "blank slate"
 - Soils and moisture are biggest constraints for future planting palettes
 - Because ecological constraints are minimal, planting can be considered primarily from the architectural / structural requirements or natural/ restoration narrative qualities that are desired

Ecological Findings

49

Opportunities: Trees with significant cavities

- need some management in short term due to risks
- could leave some snags for wildlife/nesting – opportunity, but also risk if certain sensitive species are attracted to a busy urban park – feature should be aligned with educational opportunity (signage etc)

Ecological Findings

50

Opportunities: Adding strategic pockets of understory planting in cathedral-like forests to:

- to direct foot traffic - mediating new stress (compaction adds to dry shade making it harder for trees to get moisture)
- preserve ground and roots
- provide new future growth and regeneration
- consider mulch circles around trees to preserve moisture, especially where grass is thinner

Ecological Findings

51

Opportunities: Enhancements of existing tree/woods

- Current replacement rate is 2 new trees for 1 removed
- Stress quality over quantity – increase native species, companion plantings, and more diversity of structure in the forest (canopy, sub-canopy, understory, ground cover, etc.
- Meet or exceed requirements of Public Tree Protection By-Law

Ecological Framework

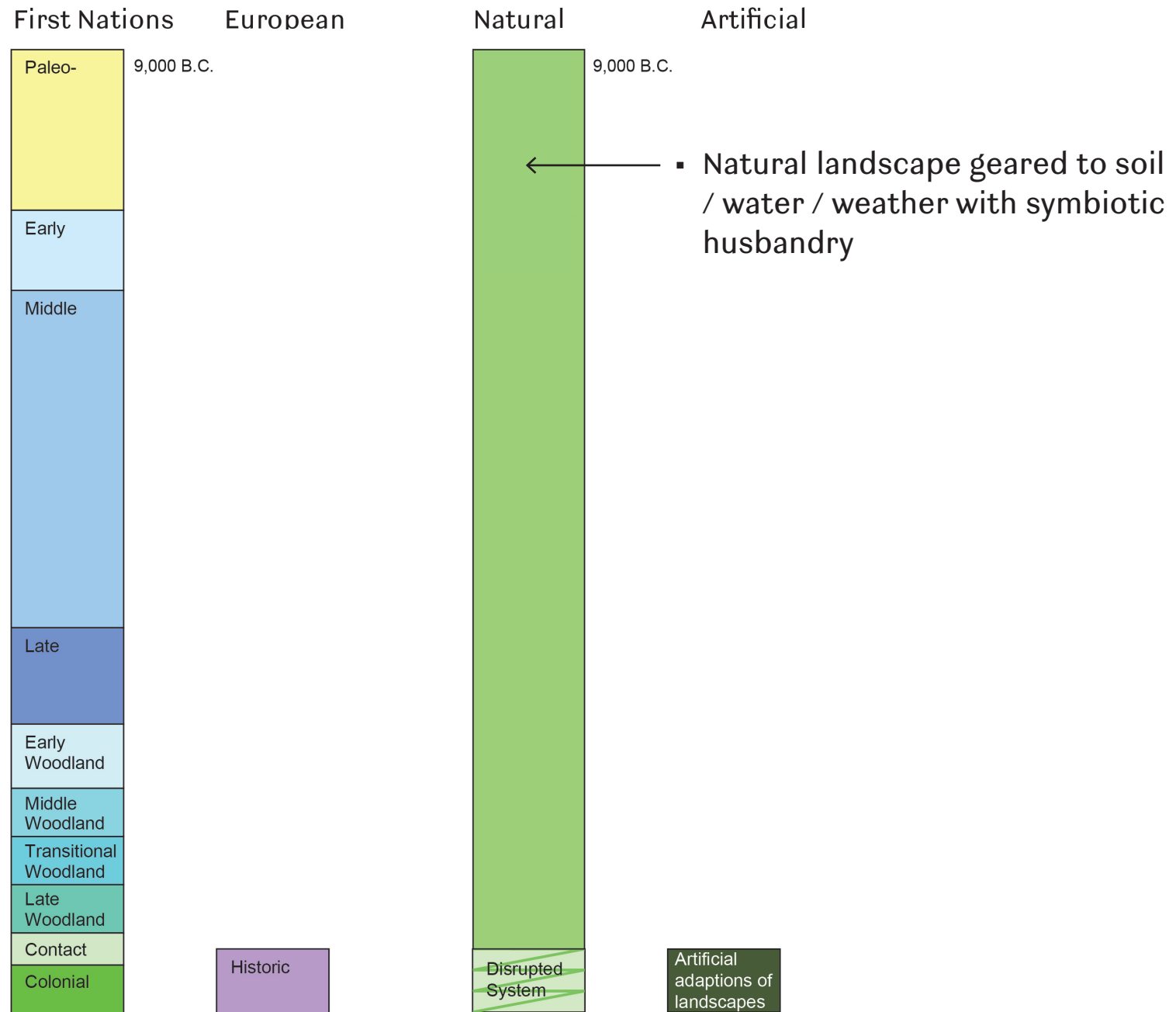


Figure 1 – Timeline of Human Habitation

Figure 2 – Timeline of Landscape

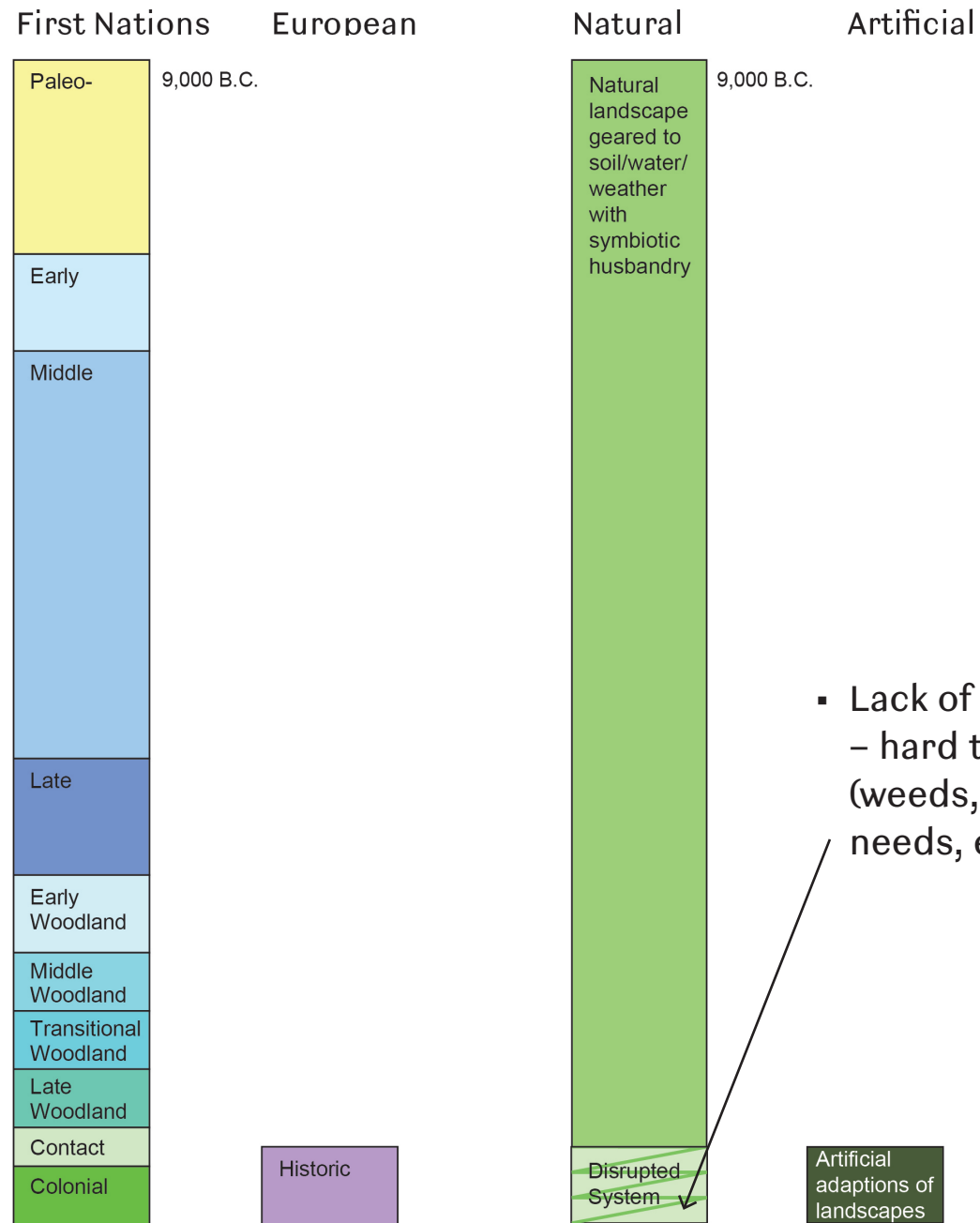


Figure 1 – Timeline of Human Habitation

Figure 2 – Timeline of Landscape

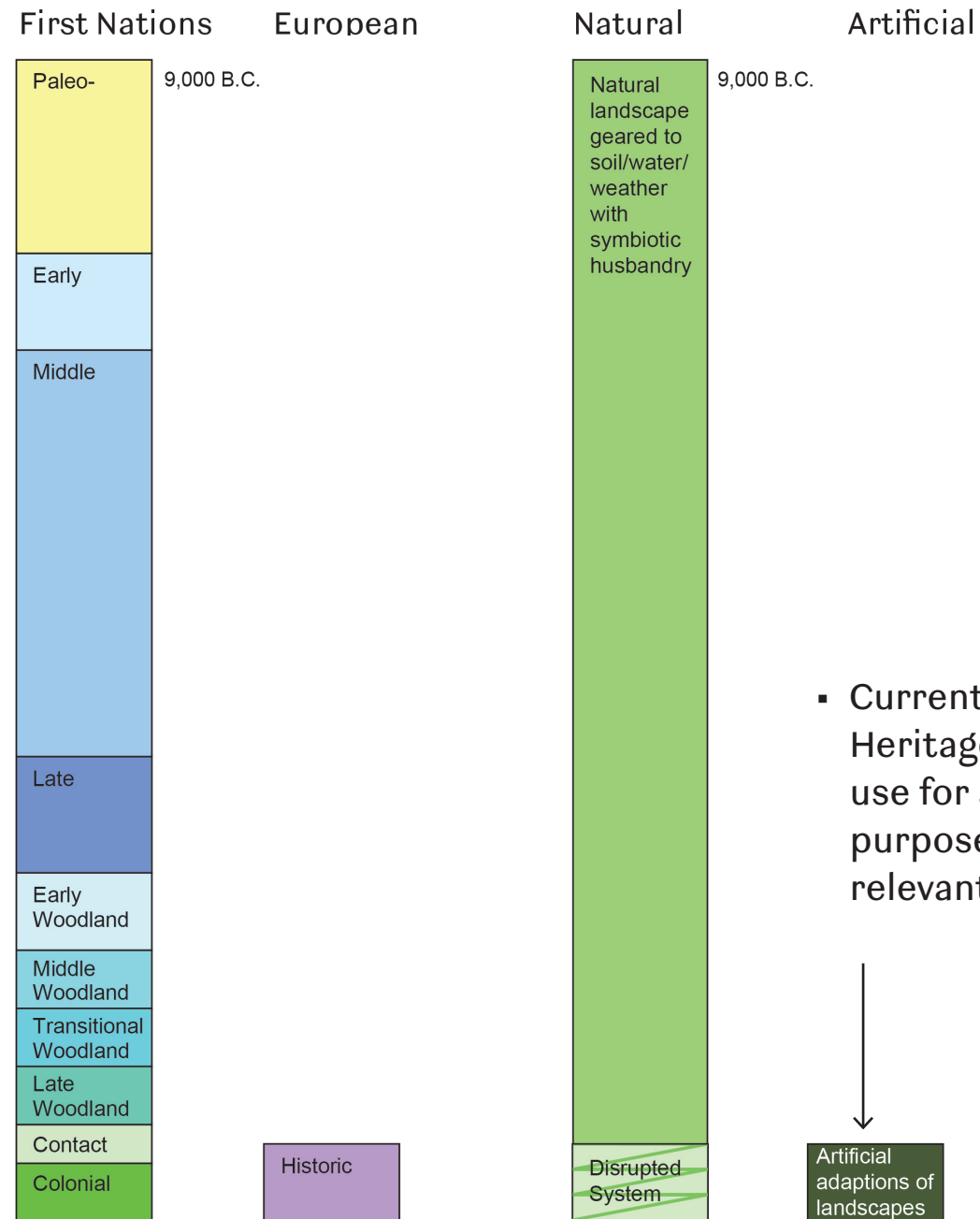


Figure 1 – Timeline of Human Habitation

Figure 2 – Timeline of Landscape

New Ecological Framework

- Target enhancements that push further back to a pre-colonial palette for reinvigoration for the future.
- Embed *indigenous reciprocity* concepts.
- Opening the land to wide public use while giving back to its nature.
- The new Park still shapes the landscape, but with enough enhancements that a visitor with the right interpretation, can perceive the precolonial/natural landscape from which the Park emerged.

Natural

Artificial

56



2021

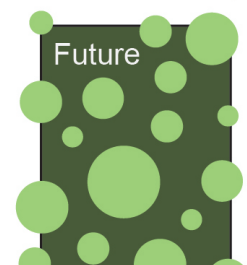


Figure 2 – Timeline of Landscape

New Ecological Framework

- Target an enhancement matrix that IS resilient and ready to function.
- New enhancements allow/encourage biodiversity to flourish based on soil / water / weather.
- Landscape enrichment includes planting for other species

Natural

Artificial

57

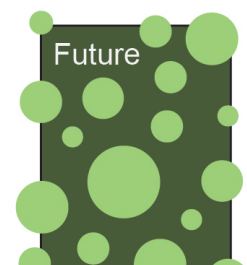


Disrupted
System



Artificial
adaptations of
landscapes

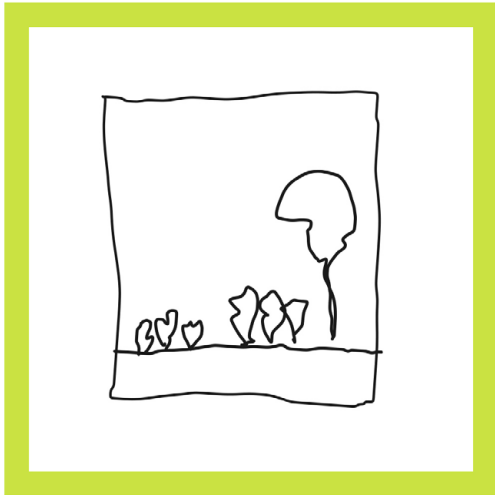
2021



Future

Figure 2 – Timeline
of Landscape

HISTORIC · INDIGENOUS · FOOD

Cultivation

Prioritize cultural, historical, and aesthetic requirements of gardens – plants should still be a minimum of 80% native, except where necessary for historic or cultural reasons (i.e. agriculture, historic garden, etc.)

OPEN WOODED · POLLINATOR · MEADOW

Naturalization + Remediation

Balance habitat / ecological needs and aesthetic requirements – native plants and some native cultivars (acceptable) for aesthetic purposes, minimal strata / strata per existing conditions i.e. cathedral-like woodland spaces, open lawn feel maintained with meadow and pollinator 'gardens'.



FOREST · WETLAND

Restoration

Prioritize habitat and ecological goals – native plants ONLY (source - identified where possible), diverse strata i.e. canopy, understorey, ground cover, to mimic natural environments.

○ ————— ○
**MANAGED
GARDENS**

○ ————— ○
**WILD
NATURE**



cultivation

remediation + naturalization

restoration

Questions

Plan Updates



Jordanray Blvd

Jordanray Blvd

Jordanray Blvd

nozel Cres

Osler Crt

Mulock Dr

1

1

Hydro Corridor Connection 63



Fire Route

64

LEGEND

- Fire Truck Stop
- Fire Truck Route
- ▤ Fire Truck "Laneway Approach"
- ⦿ House Access

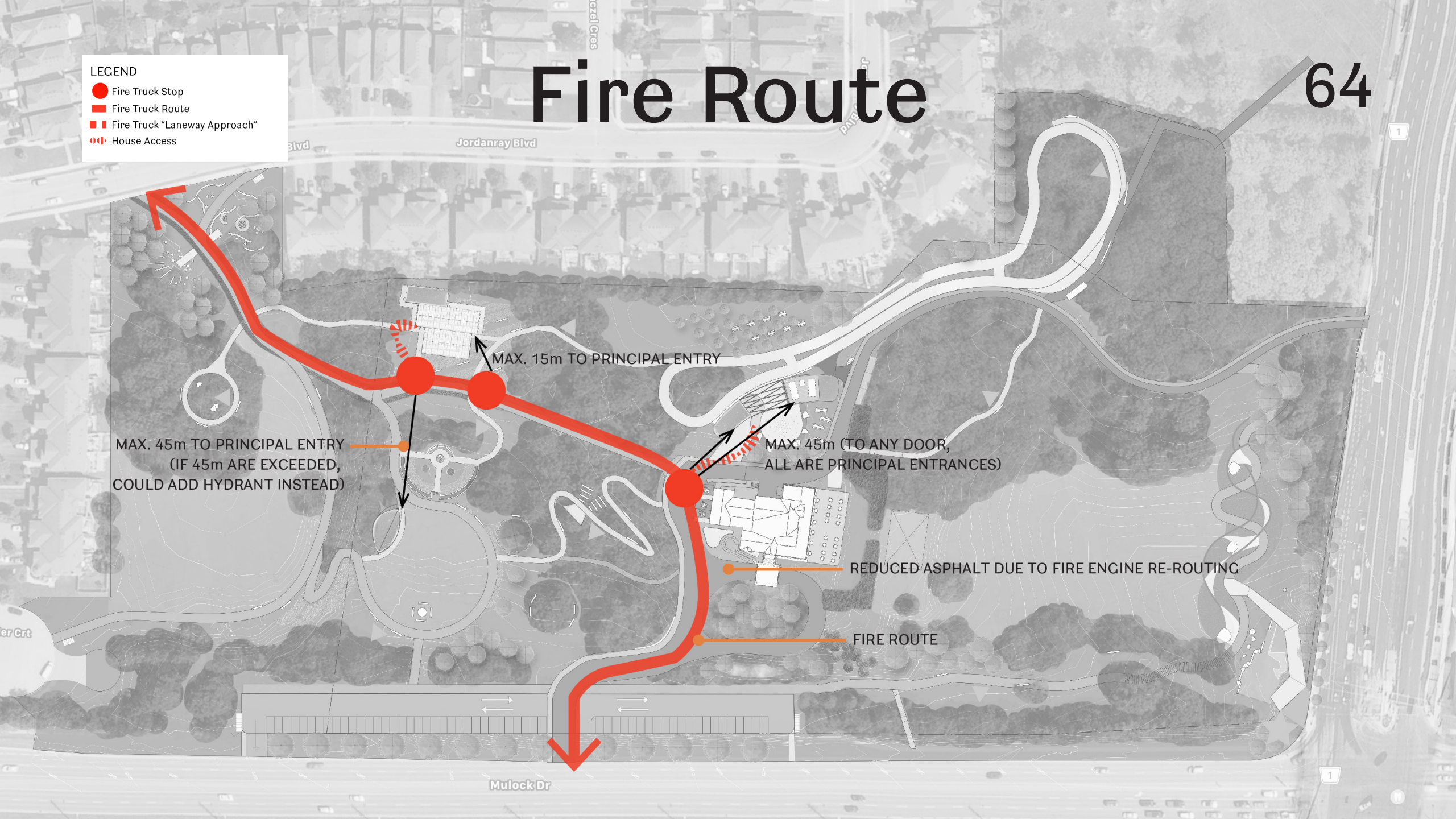
MAX. 45m TO PRINCIPAL ENTRY
(IF 45m ARE EXCEEDED,
COULD ADD HYDRANT INSTEAD)

MAX. 15m TO PRINCIPAL ENTRY

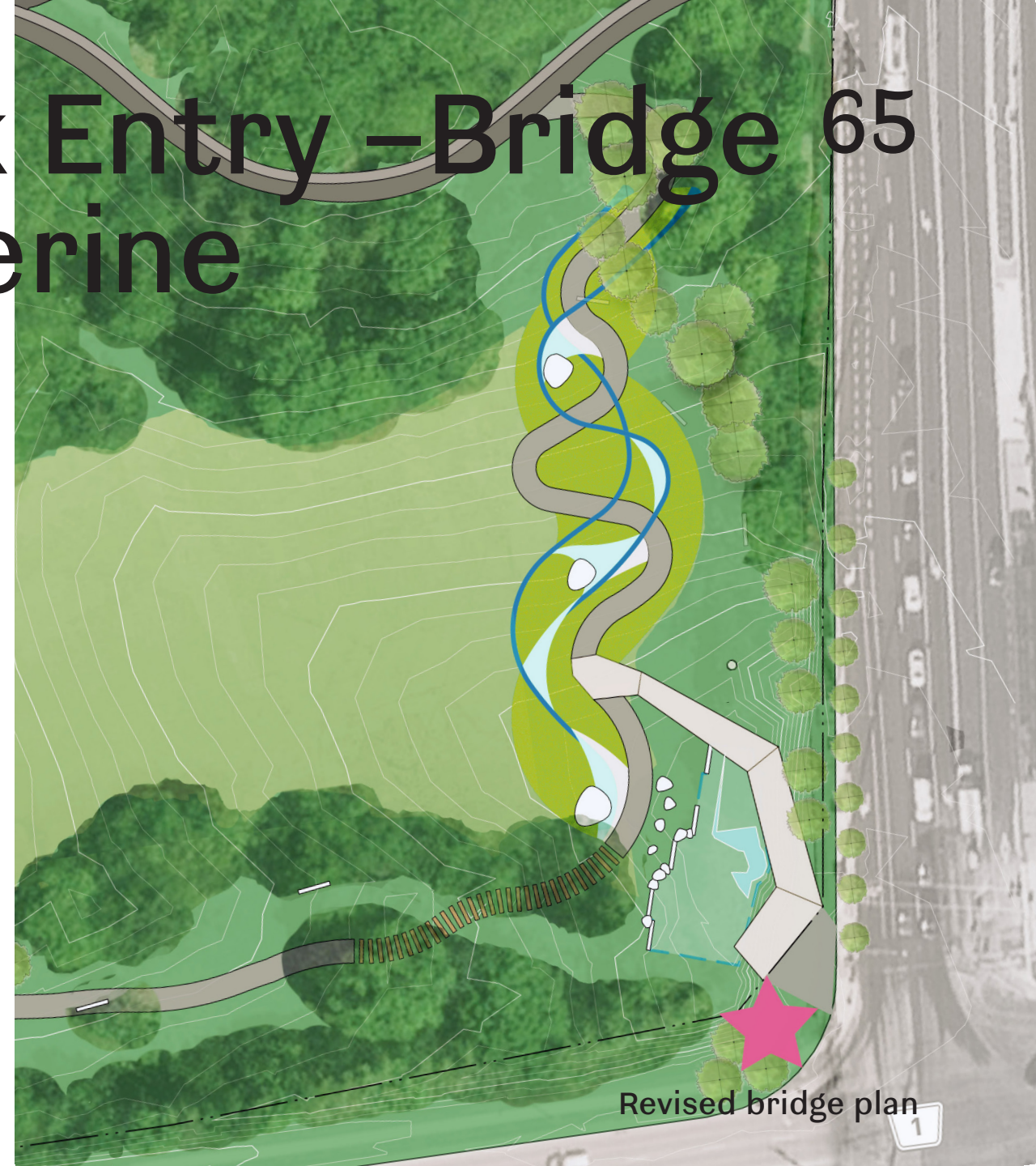
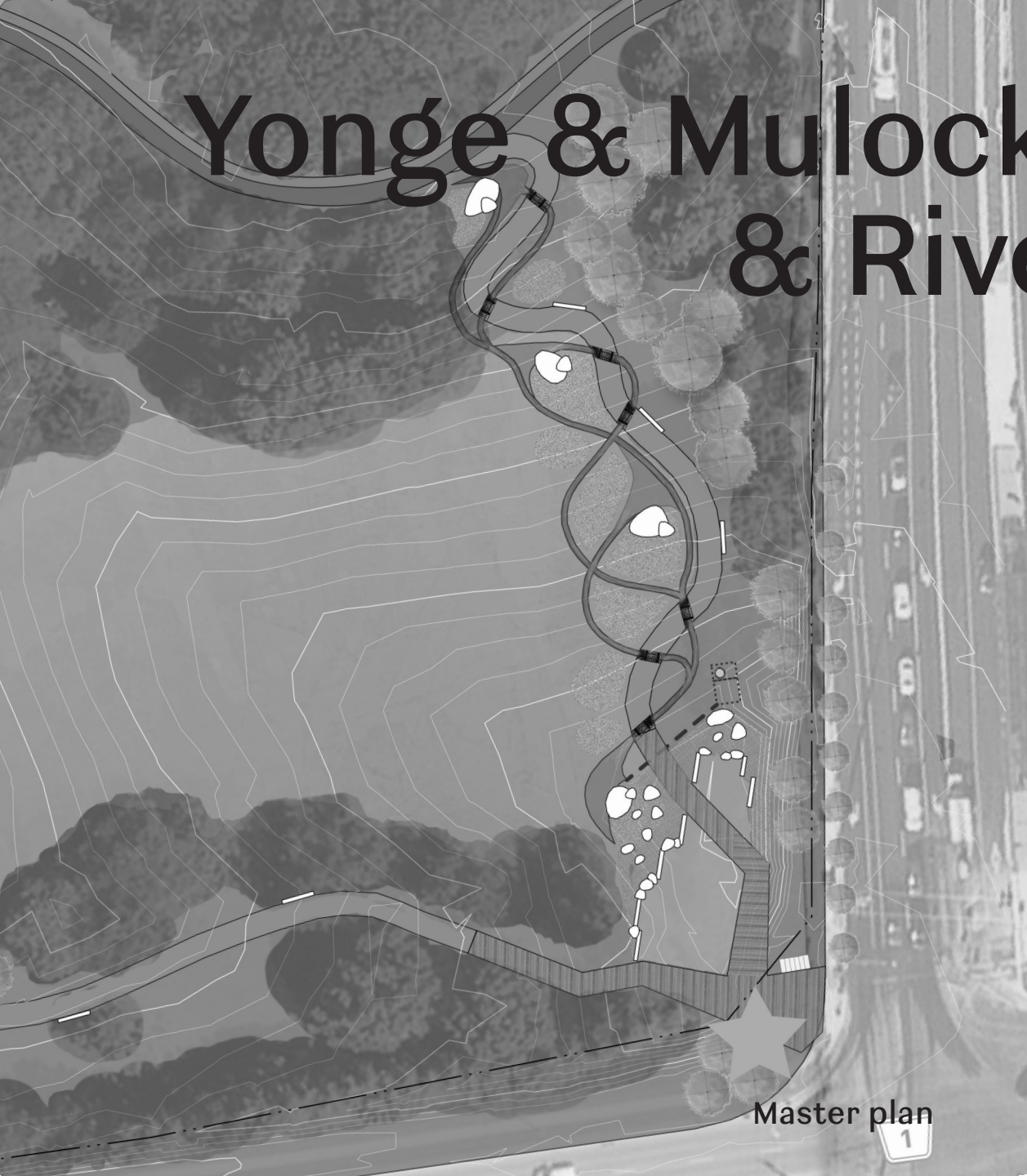
MAX. 45m (TO ANY DOOR,
ALL ARE PRINCIPAL ENTRANCES)

REDUCED ASPHALT DUE TO FIRE ENGINE RE-ROUTING

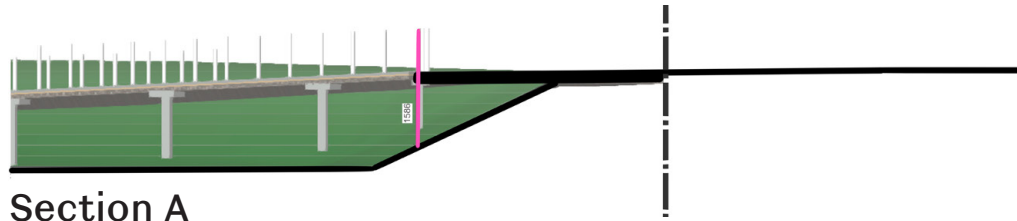
FIRE ROUTE



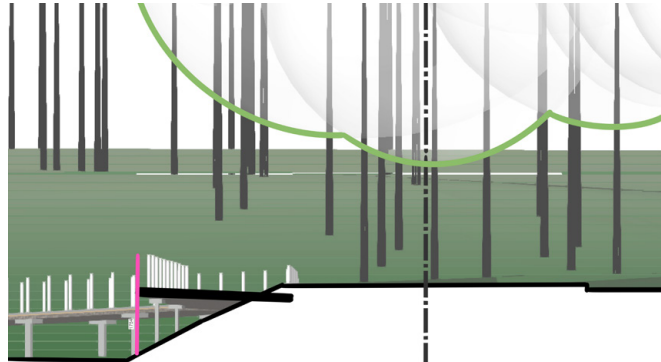
Yonge & Mullock Entry – Bridge 65 & Riverine



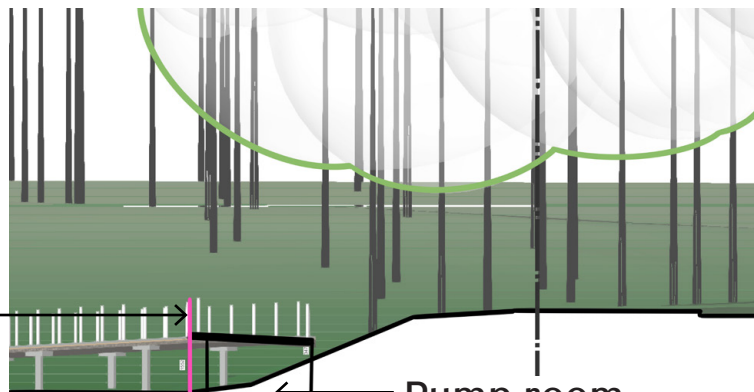
Yonge & Mullock Entry 66



Section A



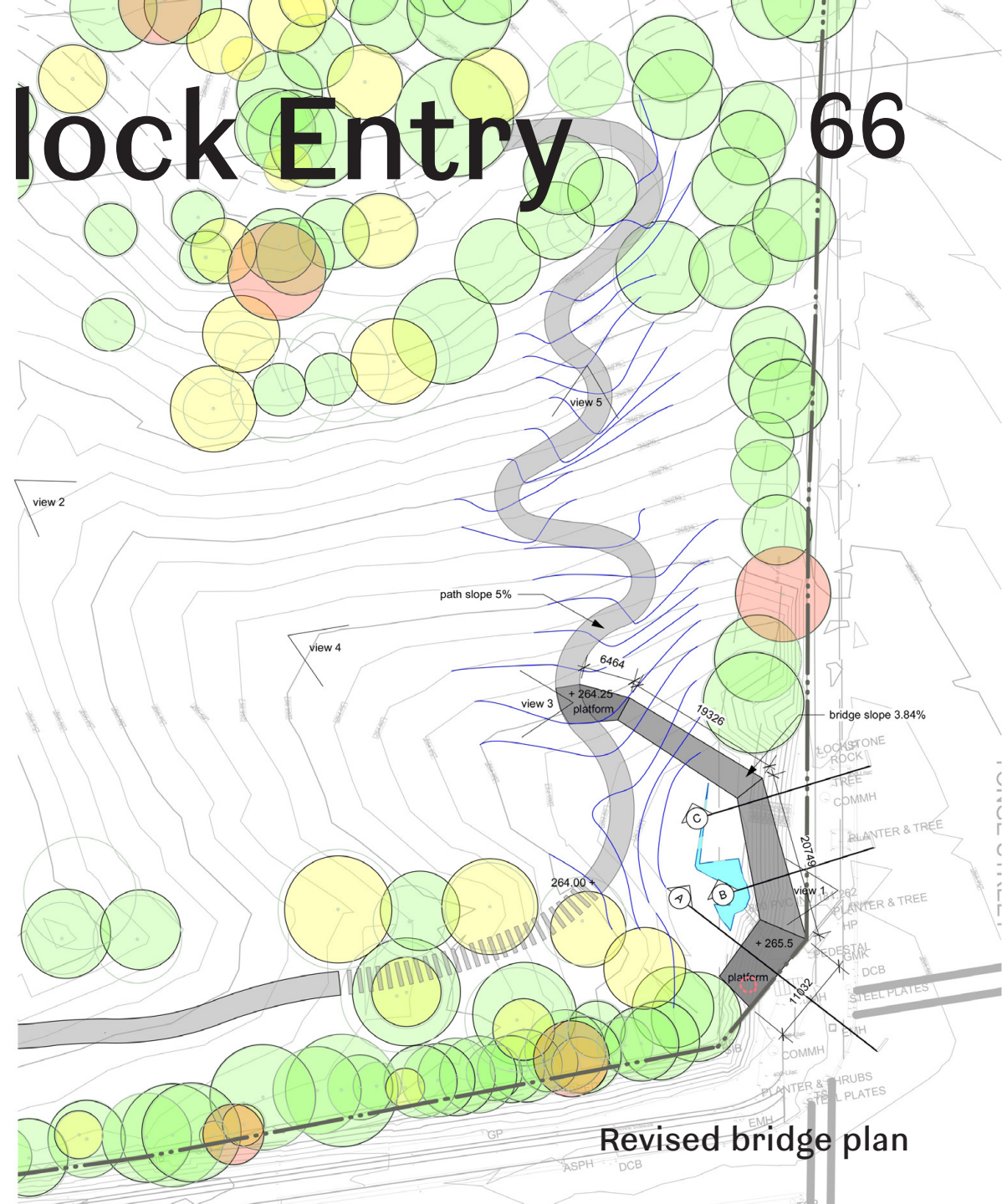
Section B



Possible
artwork

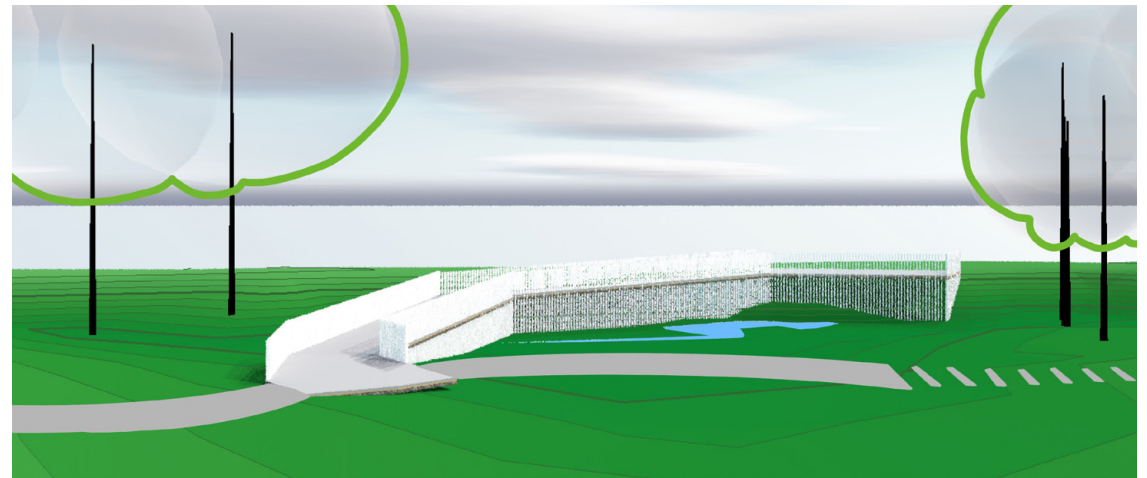
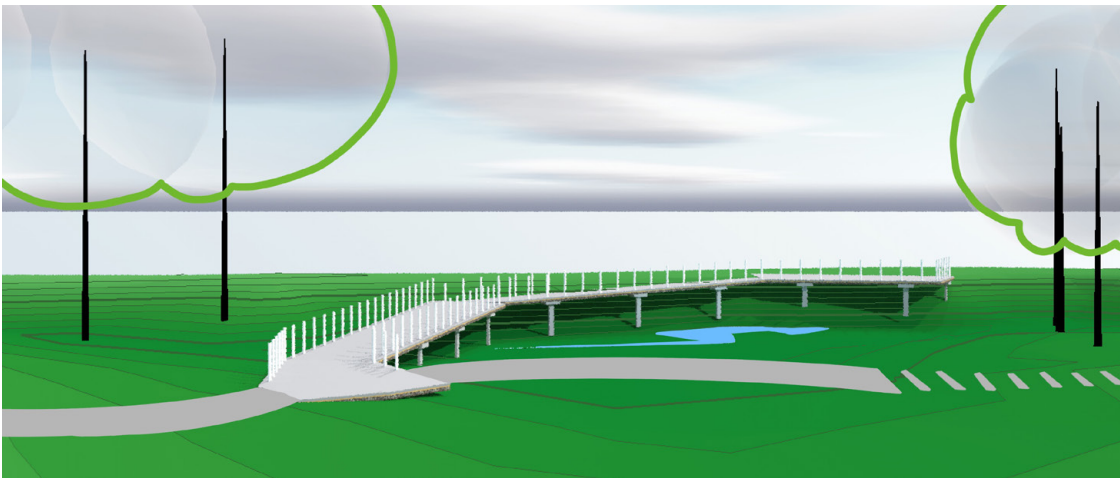
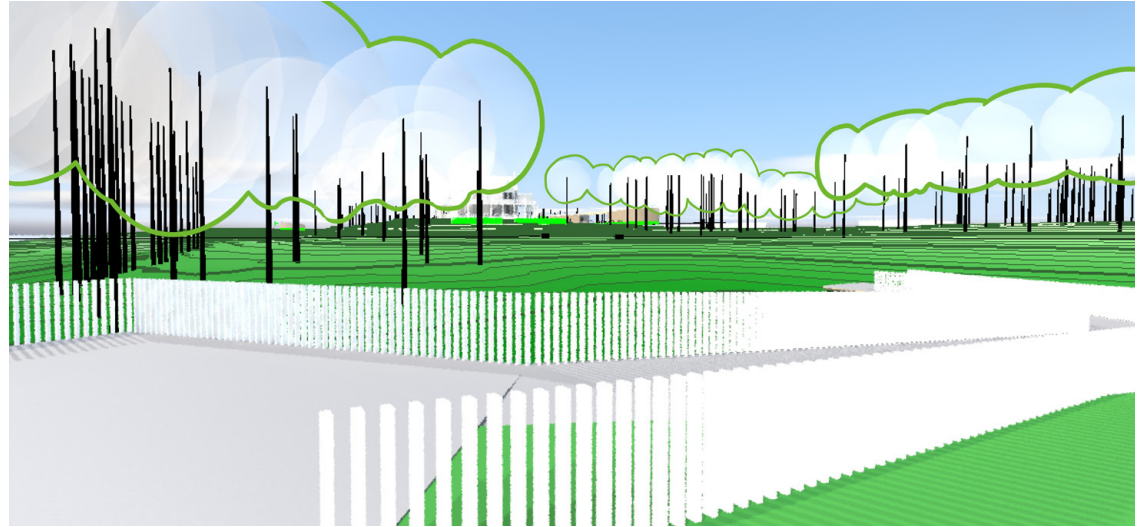
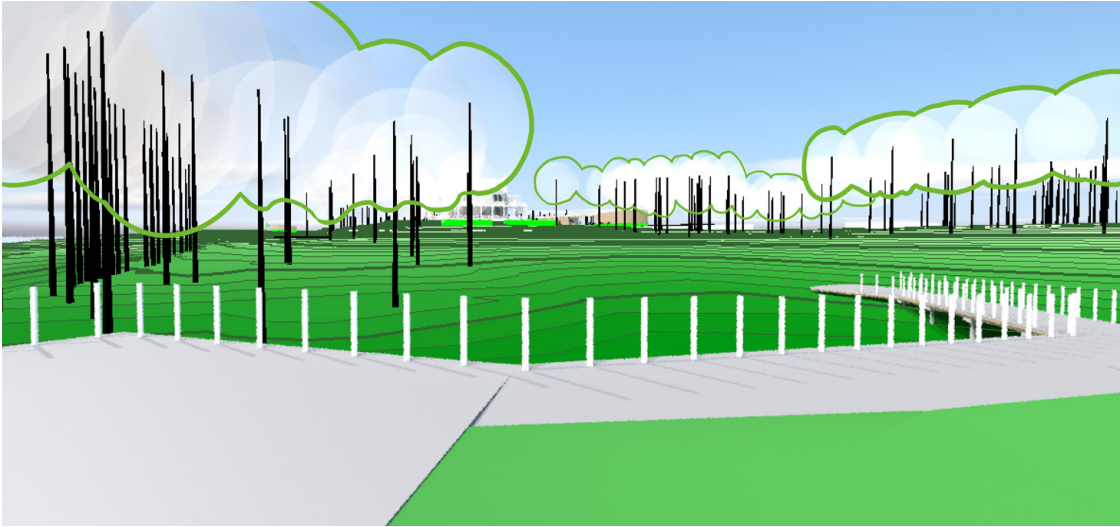
Section C

Pump room



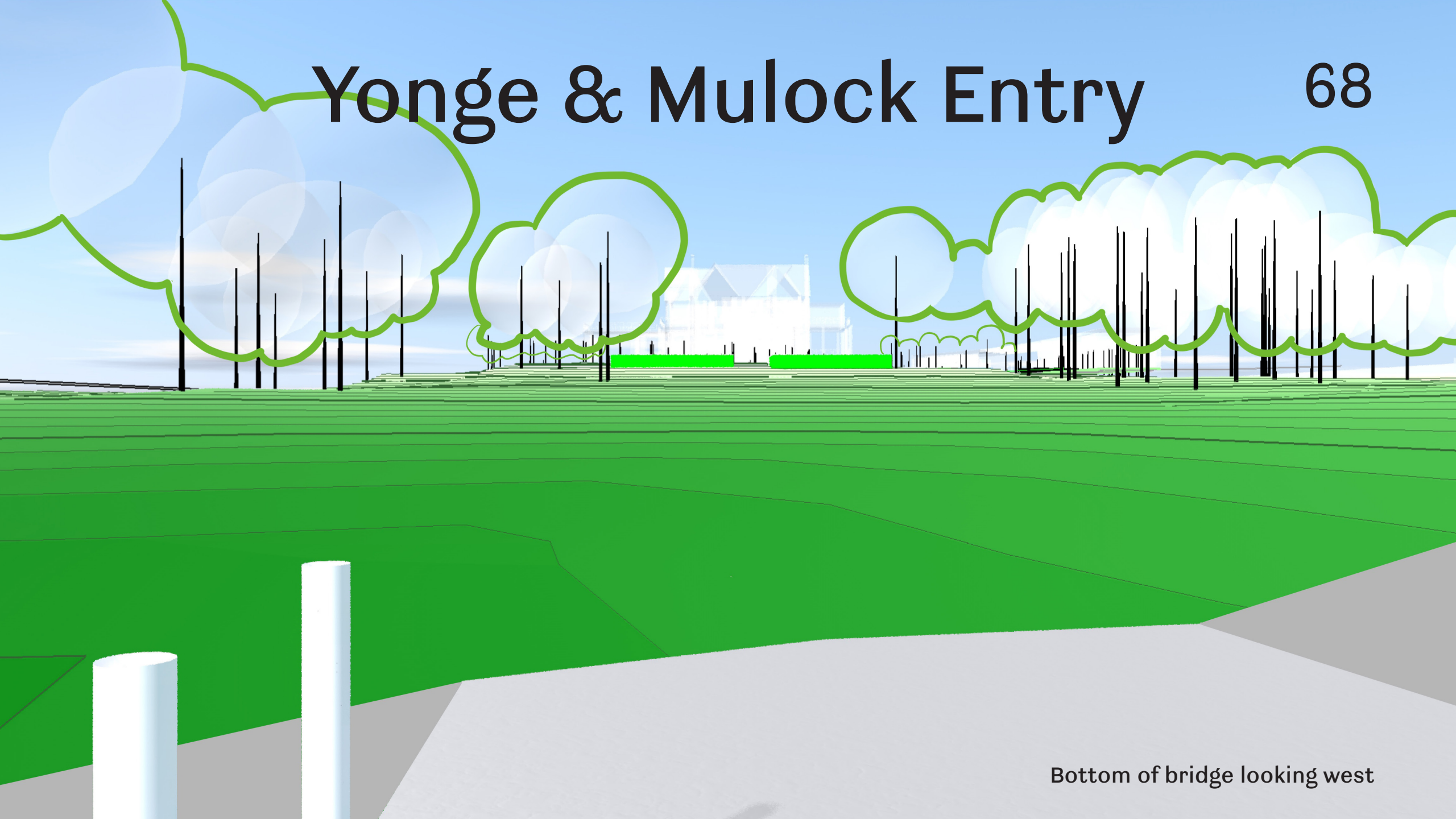
Yonge & Mullock Entry

67



Yonge & Mulock Entry

68



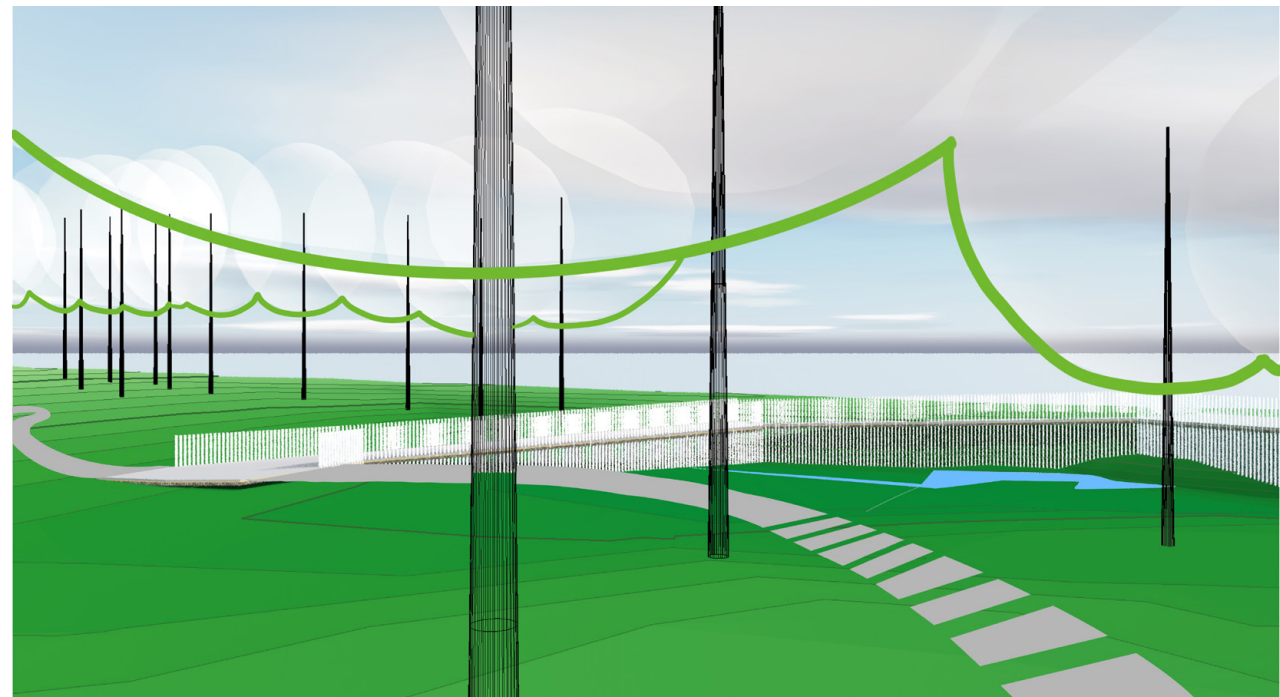
Bottom of bridge looking west

Yonge & Mulock Entry

69

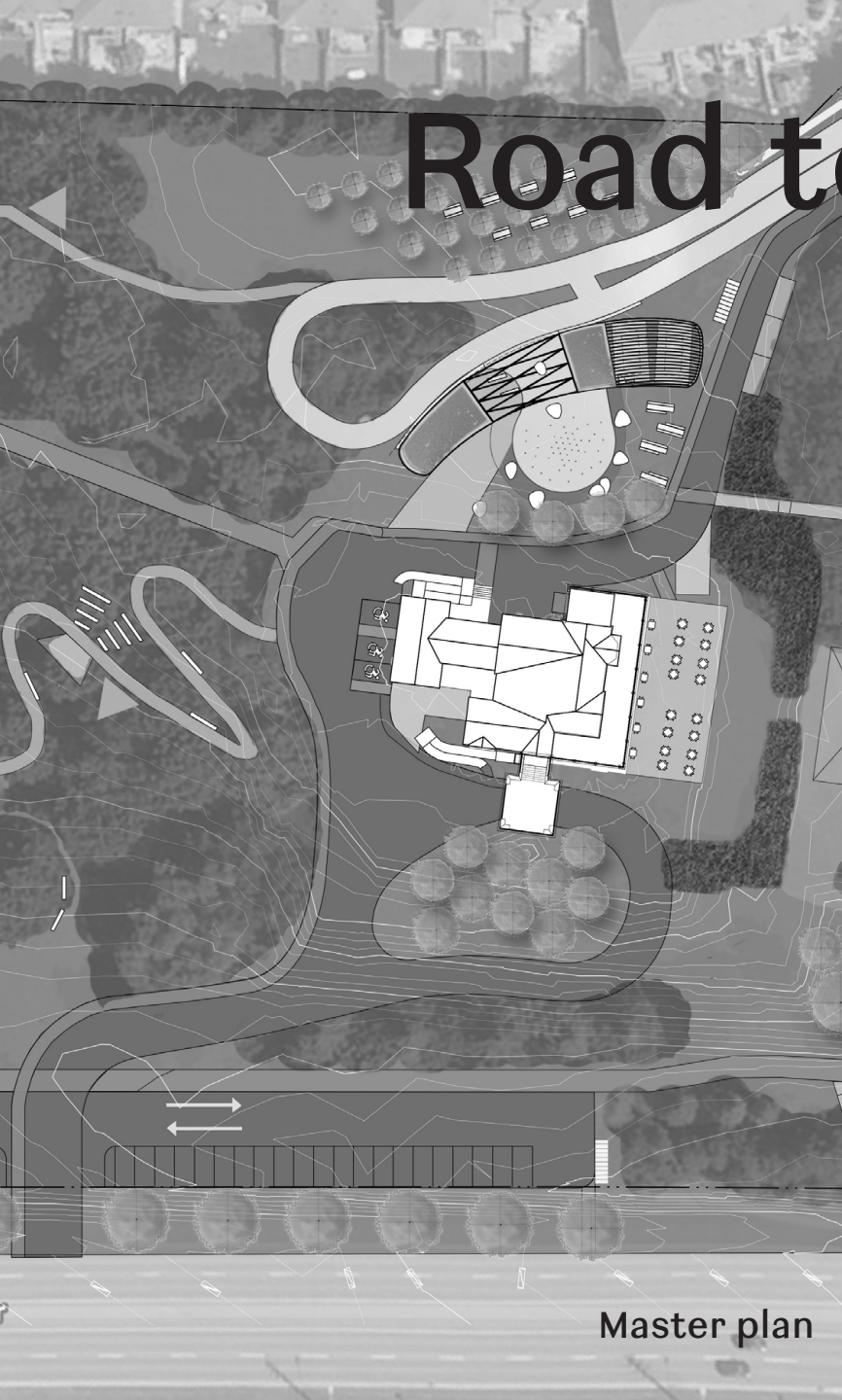


Perspective looking south - option 2



Perspective looking northeast - option 2

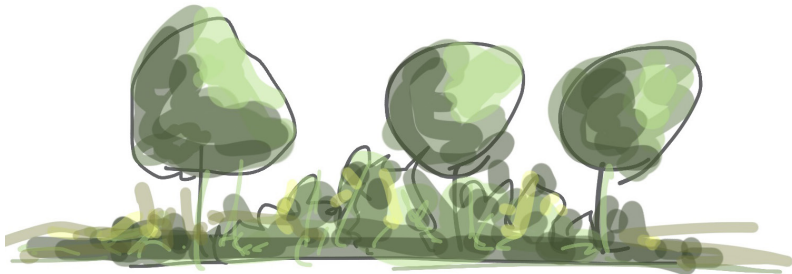
Road to house - grading 70



Road to house - planting 71



Forest planting

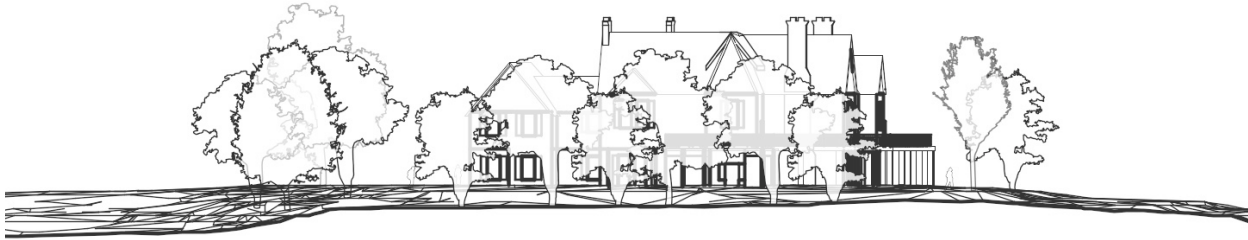


Woodland planting



Road to house - south

72



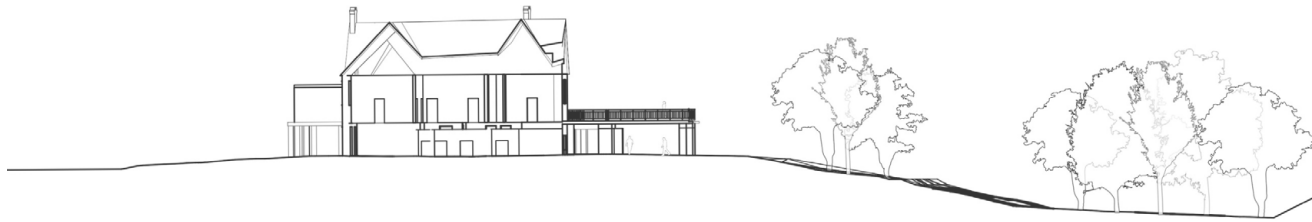
Existing house south elevation



Proposed house south elevation

Road to house - section

73

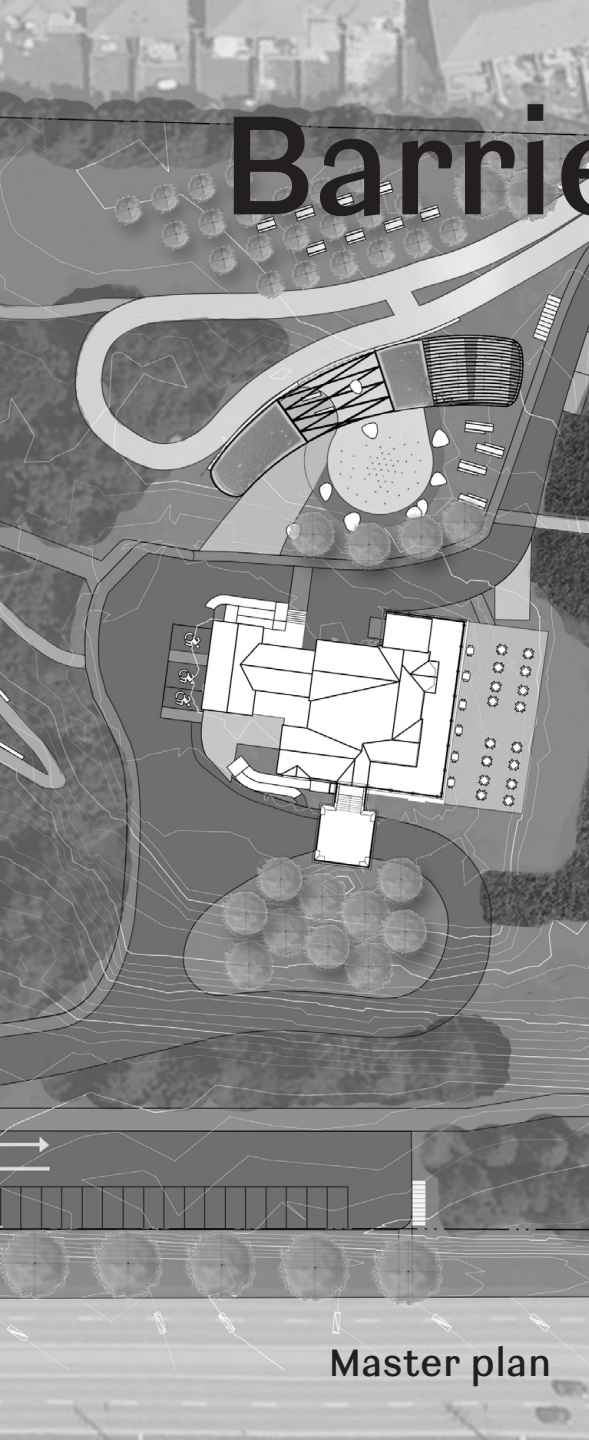


Existing house west elevation

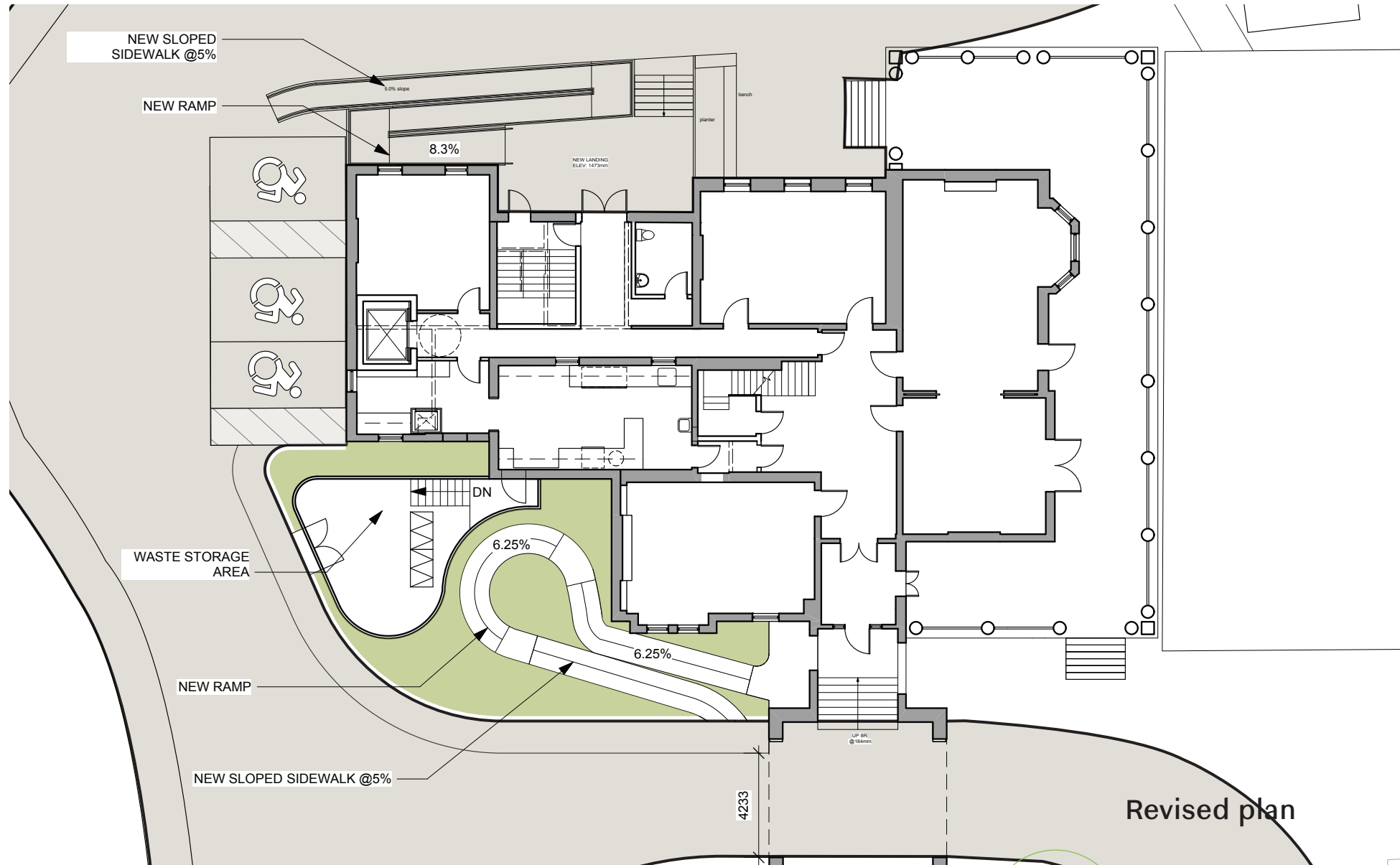


Proposed house west elevation

Barrier free access & waste-1 74



Master plan



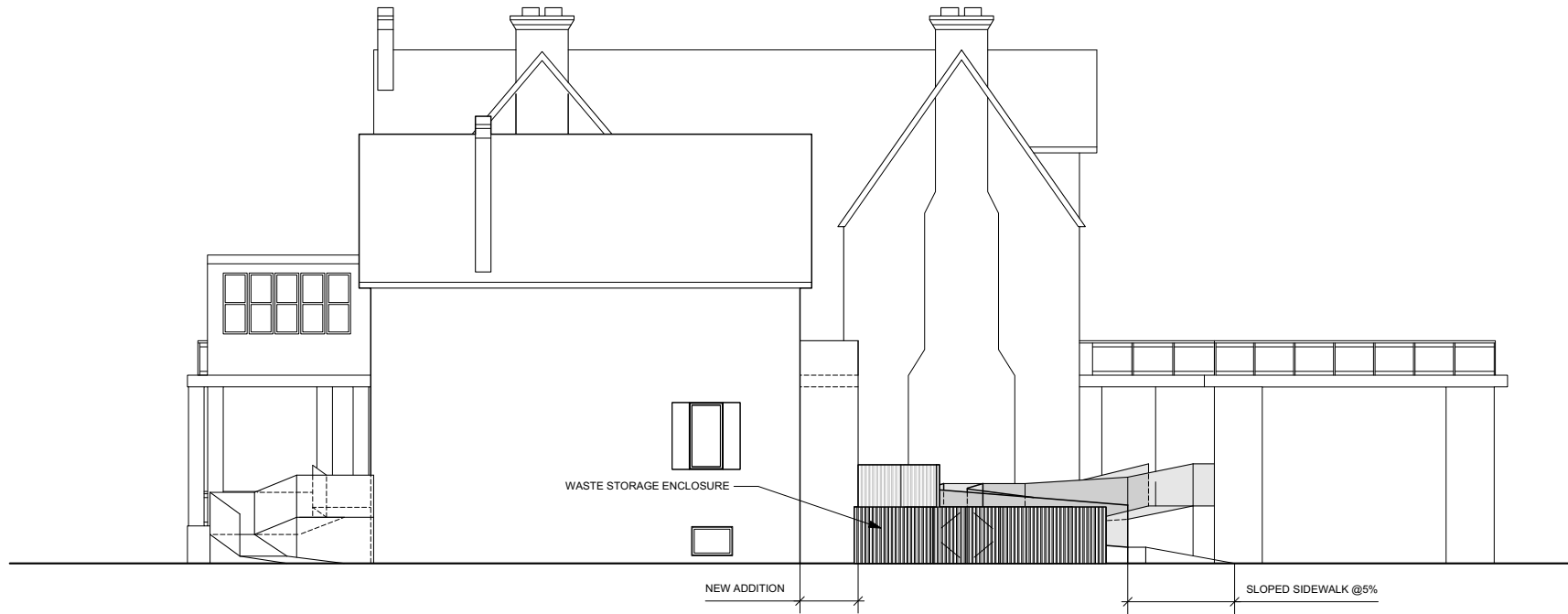
Revised plan

Barrier free access & waste-1/2 75



North elevation - option 1 and 2

Barrier free access & waste-1 76



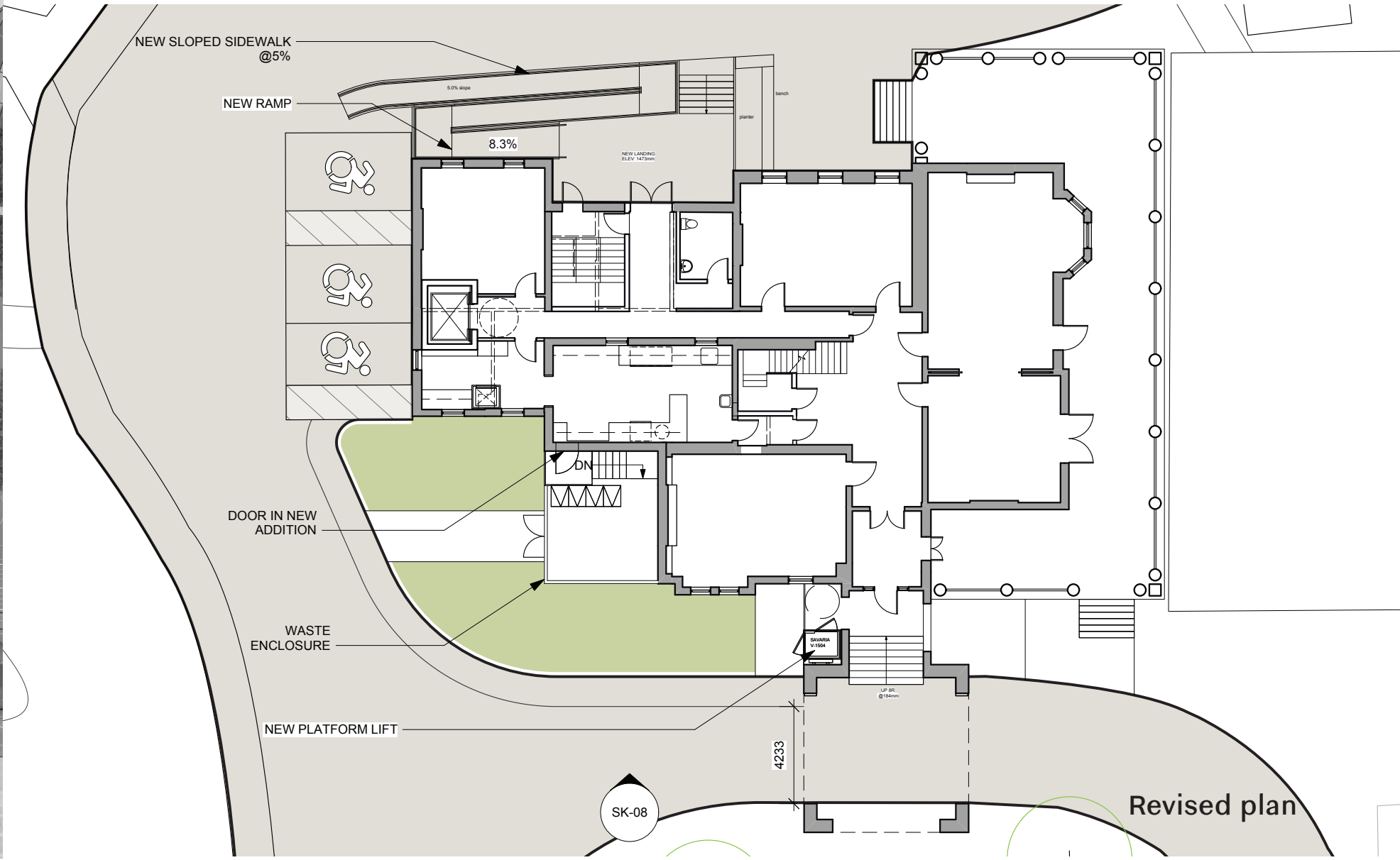
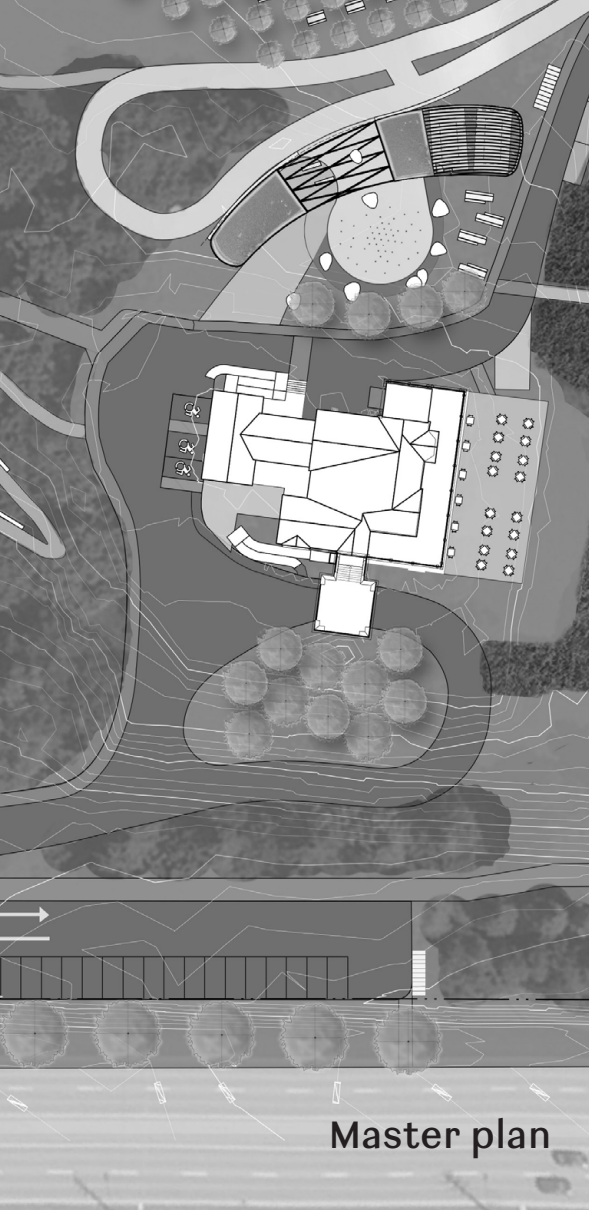
West elevation - option 1

Barrier free access & waste-1 77

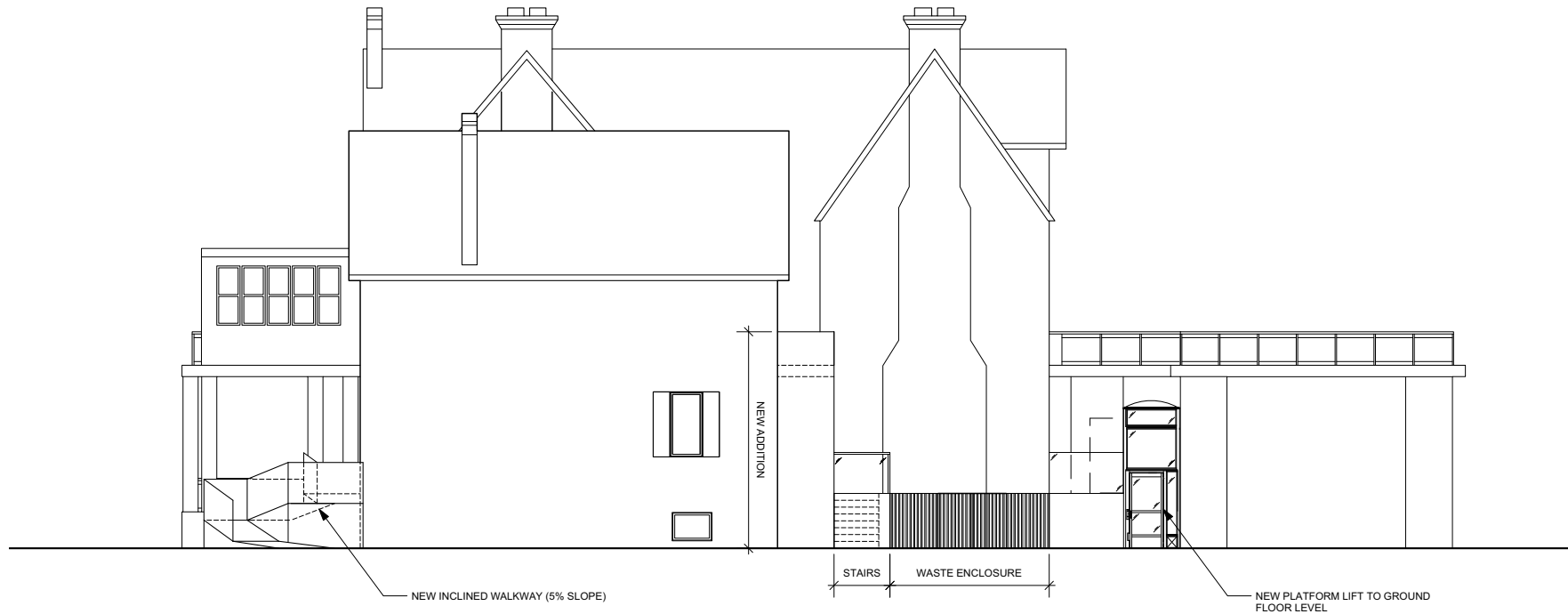


South elevation - option 1

Barrier free access & waste-2 78



Barrier free access & waste-2 79



West elevation - option 2

Barrier free access & waste-2 80

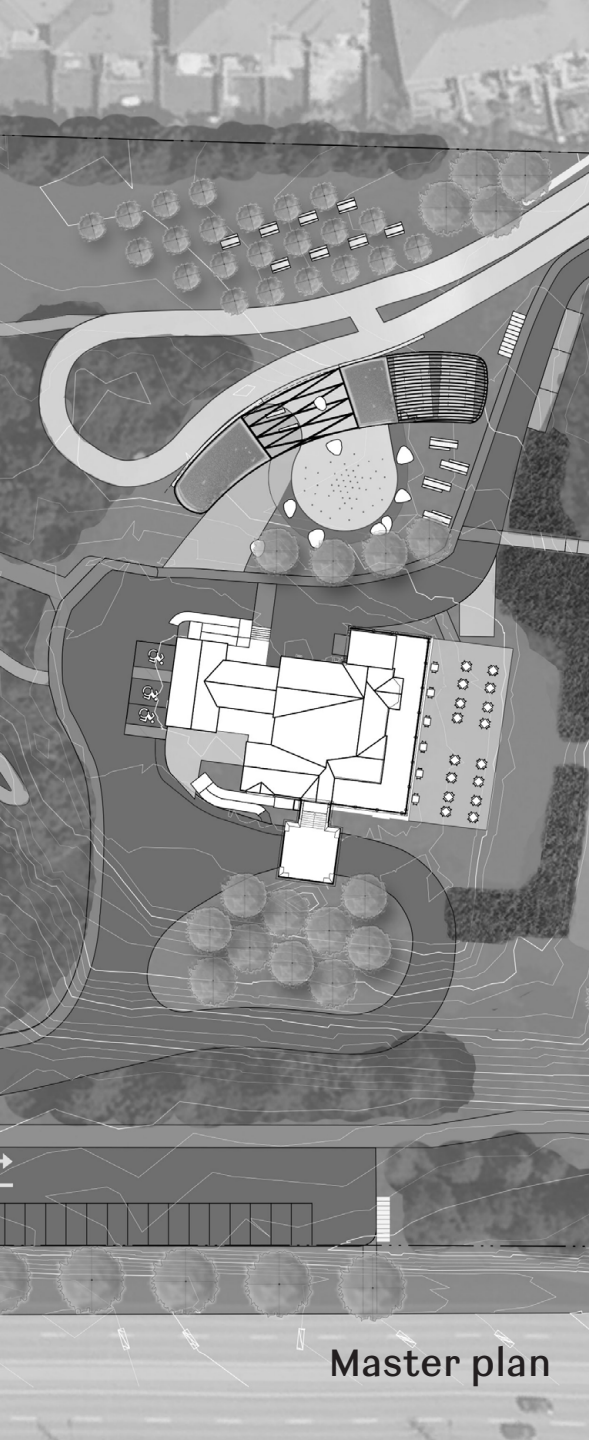


South elevation - option 2

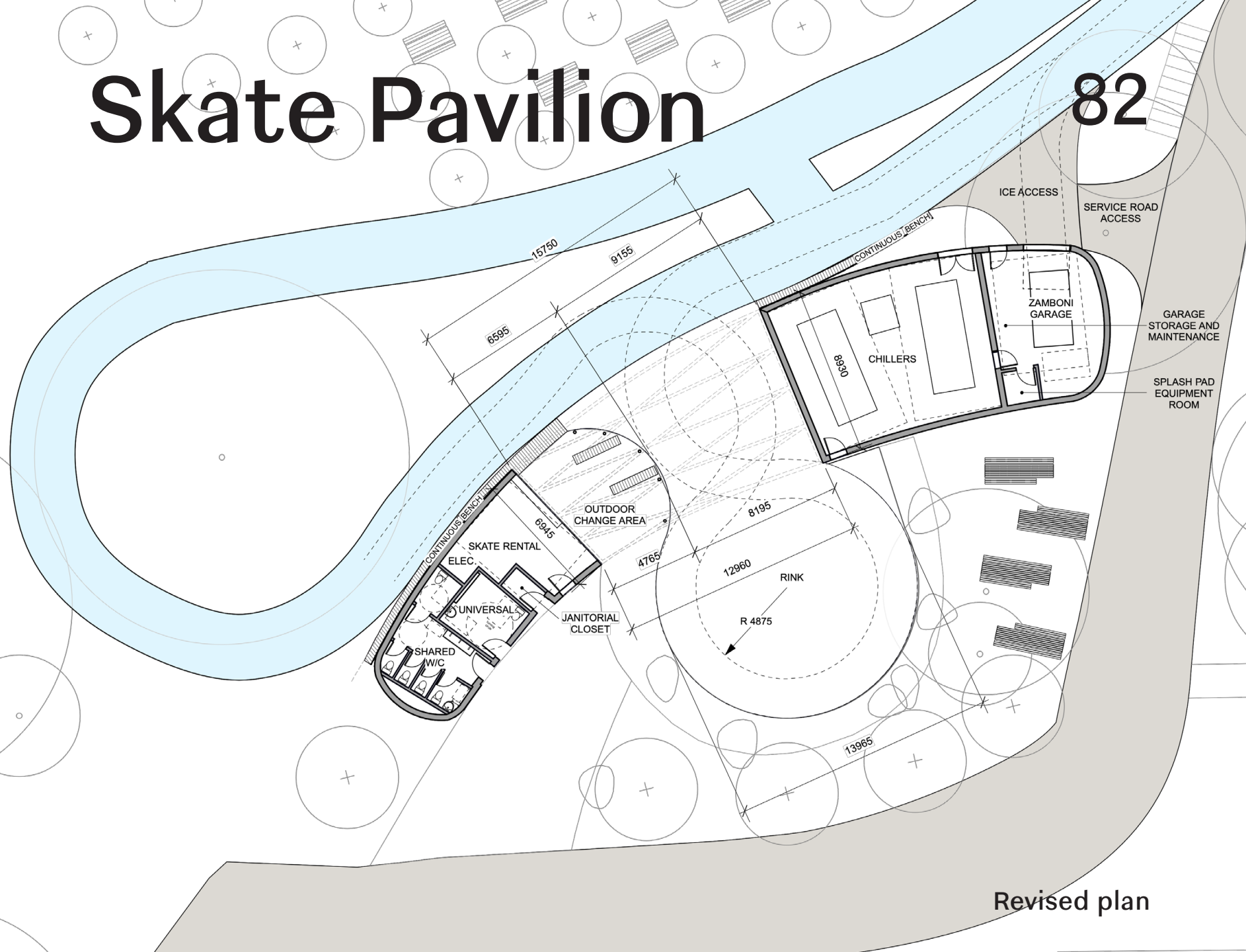
Questions

Skate Pavilion

82



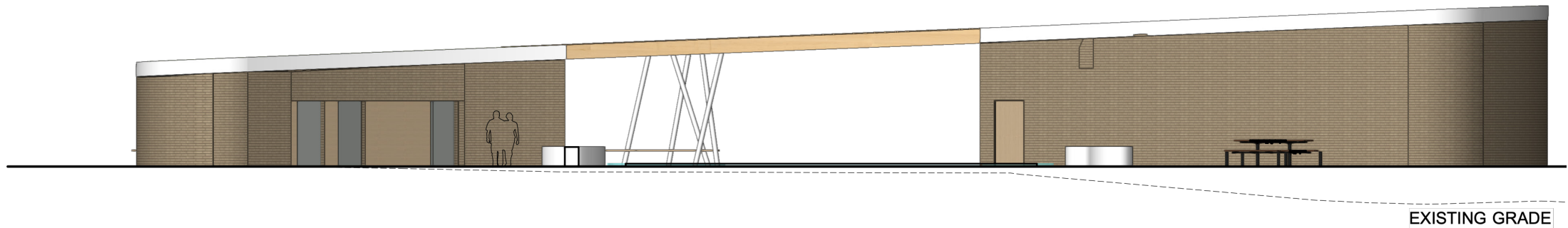
Master plan



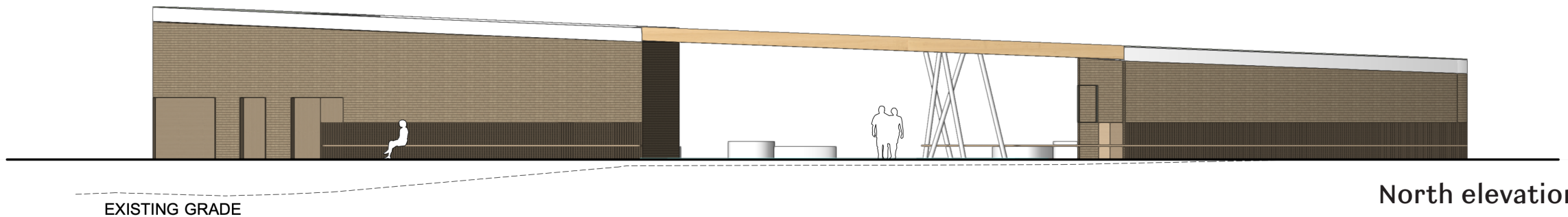
Revised plan

Skate Pavilion

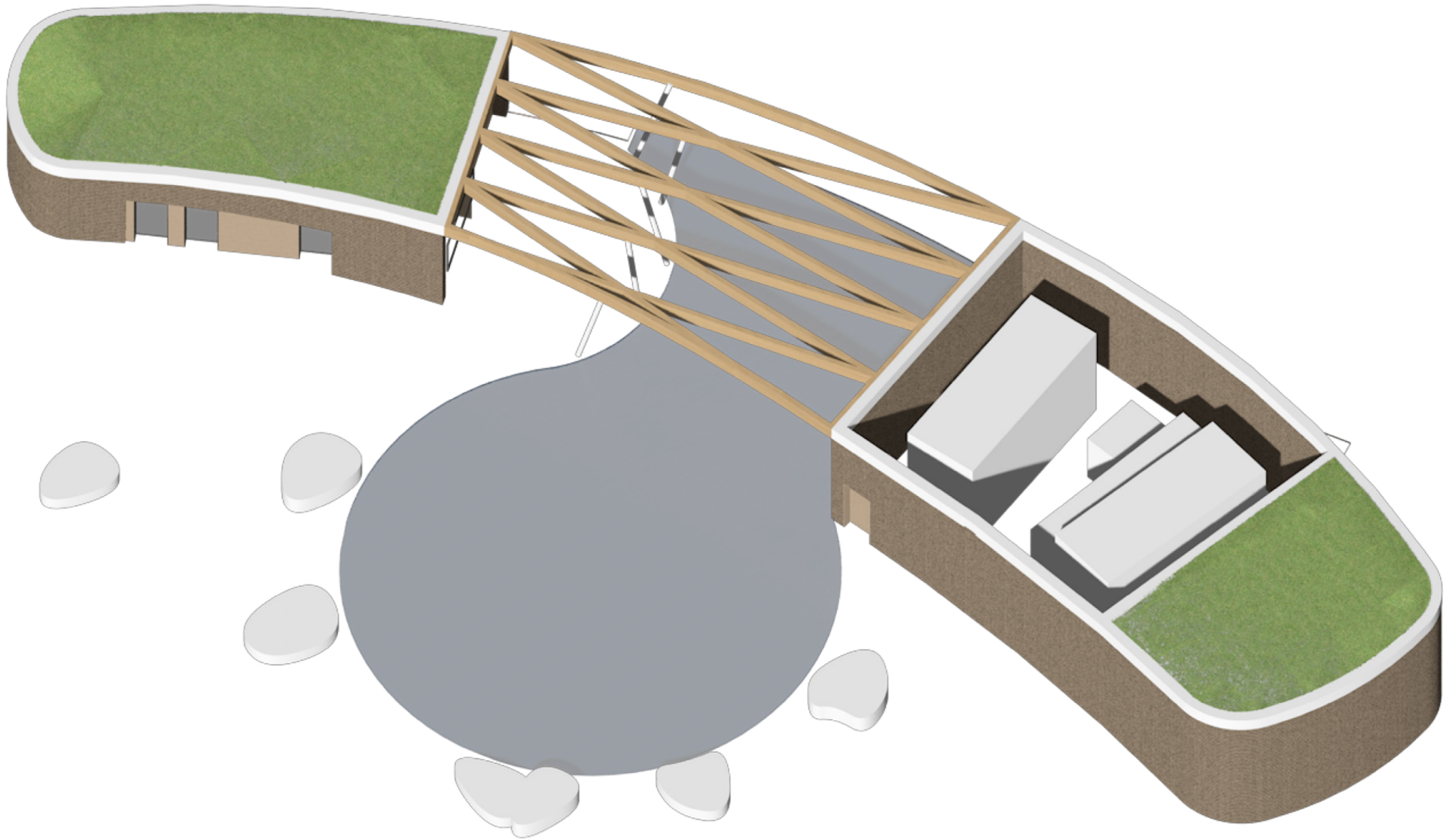
83



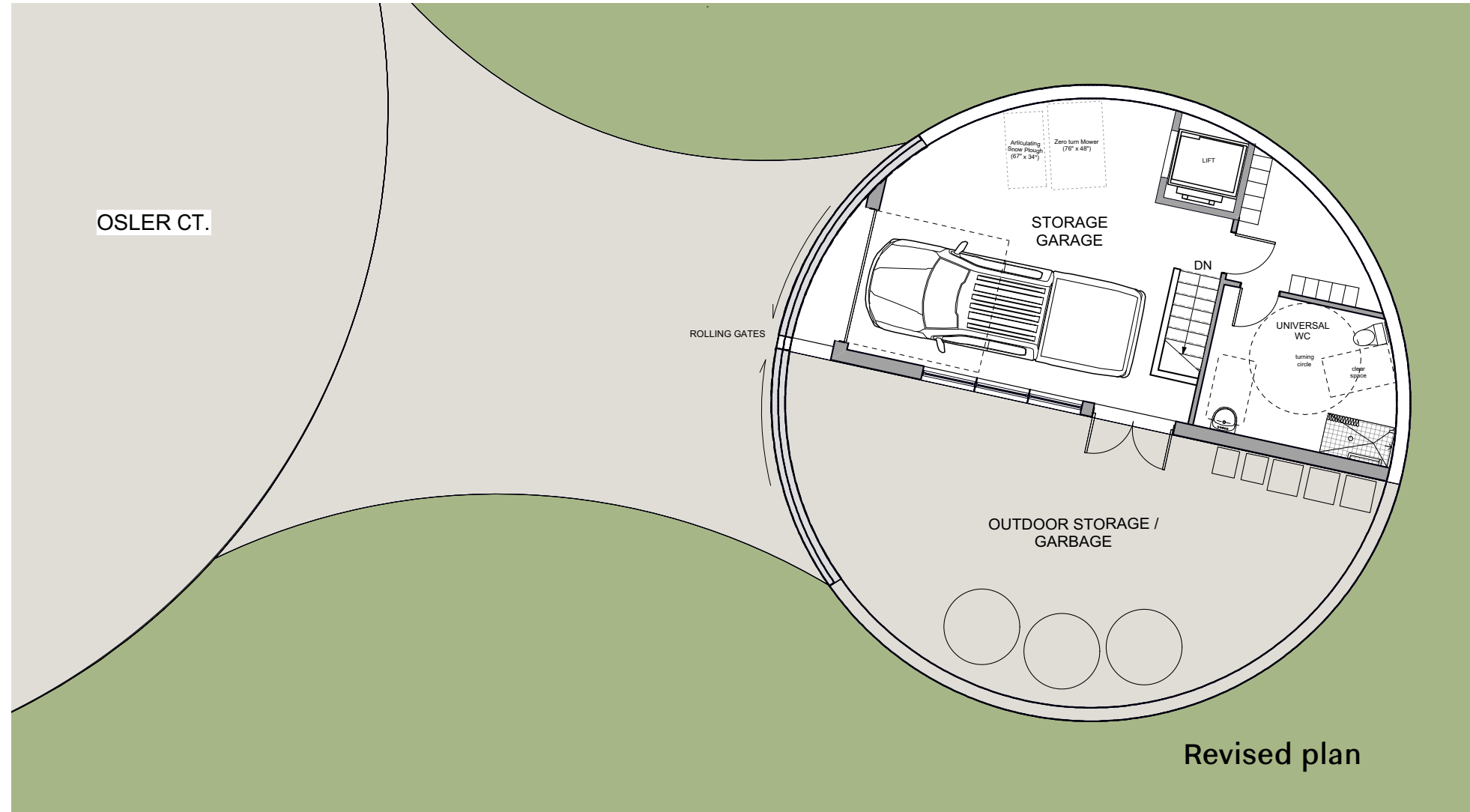
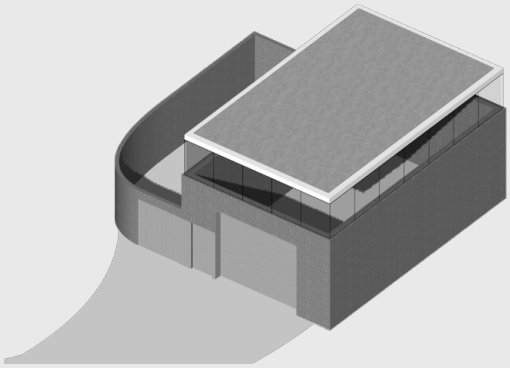
South elevation



North elevation



Maintenance Building 85



Maintenance Building

86

OSLER
CT.

Context plan



Maintenance Building

87

OSLER
CT.



Axonometric

Context plan

Maintenance Building

88



Artwork gates on utility wall



West elevation

Staff Comments

89



Maintenance:

- Storage and snow clearing

Mechanical/Electrical:

- Heat tracing
- Generator (house and conservatory)

Storage:

- Furniture storage

Skate:

- Maximum public space
- Where do bags go

House:

- Visibility of garbage

Questions

Project Status

91

WE ARE HERE



Schematic Design
Fall 2021

- Testing each element with:
- Regional and town feedback
- Engineering concepts
- Ecological concepts
- Art plan framework
- PIC

Design Development
Spring 2022

- Material Development
- Detailed element design
- Building and landscape engineering
- Lighting and planting
- Phasing plan
- PIC

Contract Drawings
Summer/Fall 2022

- Implementation drawings and integration
- Detailed specifications

Bid
2023

Phased Construction

Next Steps

92

October / November:

- Focus groups

December:

- Tentative Council touch point
- PIC

In development:

- Budget Pricing Oct/Nov
- Energy sources/cost vs. benefit
- Snow/garbage/maintenance
- Arts plan

- Conservatory and artist studio
- Heritage garden research
- Pedestrian/vehicle cycle logic/paving
- Engineering

P L A N T