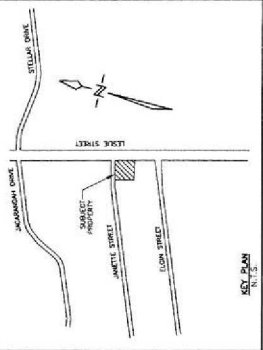
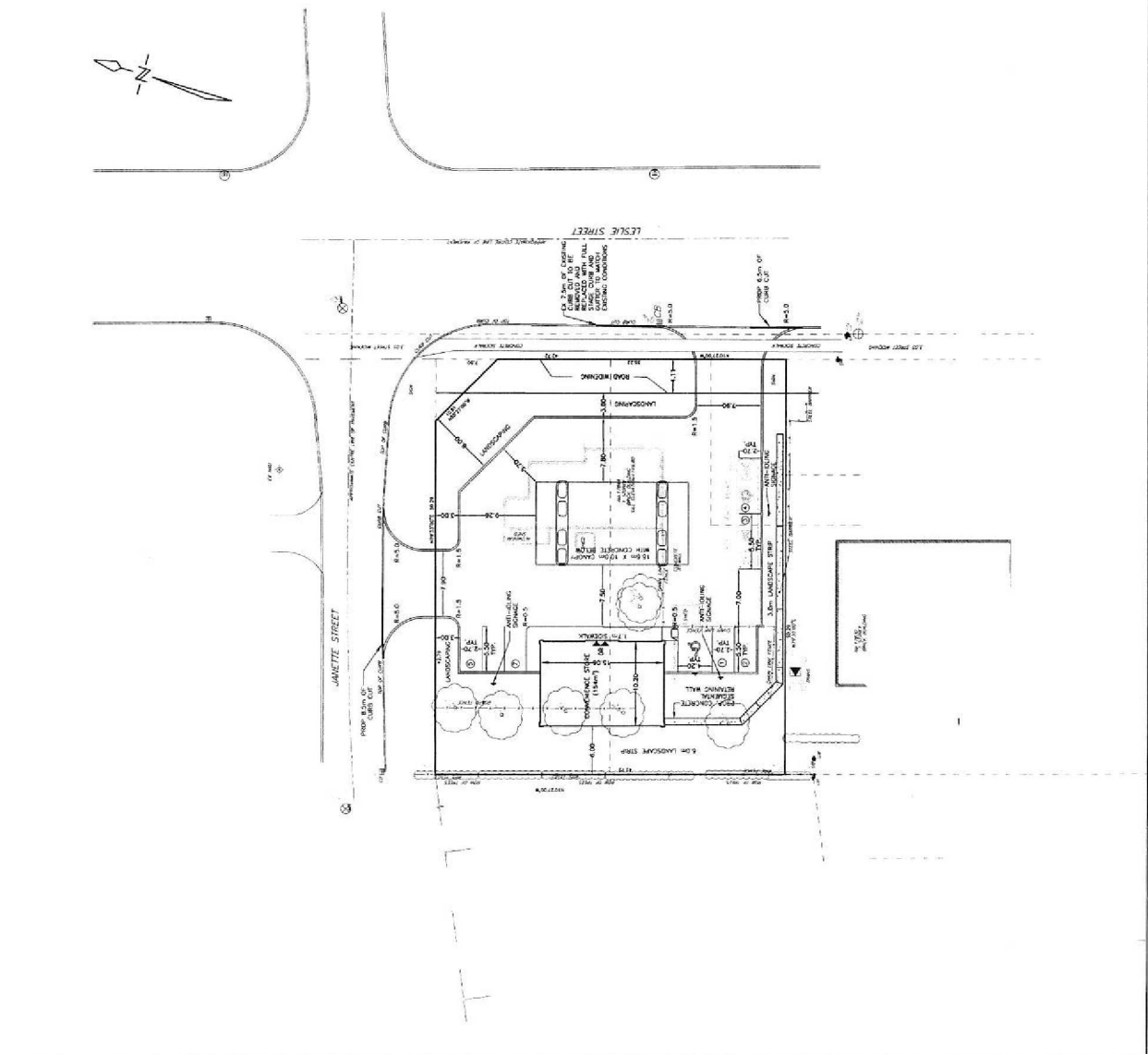


| Item | Description                                    | Quantity | Unit           | Notes |
|------|--|----------|----------------|-------|
| 1    | Excavate and backfill to existing ground level | 150      | m <sup>3</sup> |       |
| 2    | Excavate and backfill to existing ground level | 150      | m <sup>3</sup> |       |
| 3    | Excavate and backfill to existing ground level | 150      | m <sup>3</sup> |       |
| 4    | Excavate and backfill to existing ground level | 150      | m <sup>3</sup> |       |
| 5    | Excavate and backfill to existing ground level | 150      | m <sup>3</sup> |       |
| 6    | Excavate and backfill to existing ground level | 150      | m <sup>3</sup> |       |
| 7    | Excavate and backfill to existing ground level | 150      | m <sup>3</sup> |       |
| 8    | Excavate and backfill to existing ground level | 150      | m <sup>3</sup> |       |
| 9    | Excavate and backfill to existing ground level | 150      | m <sup>3</sup> |       |
| 10   | Excavate and backfill to existing ground level | 150      | m <sup>3</sup> |       |
| 11   | Excavate and backfill to existing ground level | 150      | m <sup>3</sup> |       |
| 12   | Excavate and backfill to existing ground level | 150      | m <sup>3</sup> |       |
| 13   | Excavate and backfill to existing ground level | 150      | m <sup>3</sup> |       |
| 14   | Excavate and backfill to existing ground level | 150      | m <sup>3</sup> |       |
| 15   | Excavate and backfill to existing ground level | 150      | m <sup>3</sup> |       |
| 16   | Excavate and backfill to existing ground level | 150      | m <sup>3</sup> |       |
| 17   | Excavate and backfill to existing ground level | 150      | m <sup>3</sup> |       |
| 18   | Excavate and backfill to existing ground level | 150      | m <sup>3</sup> |       |
| 19   | Excavate and backfill to existing ground level | 150      | m <sup>3</sup> |       |
| 20   | Excavate and backfill to existing ground level | 150      | m <sup>3</sup> |       |
| 21   | Excavate and backfill to existing ground level | 150      | m <sup>3</sup> |       |
| 22   | Excavate and backfill to existing ground level | 150      | m <sup>3</sup> |       |
| 23   | Excavate and backfill to existing ground level | 150      | m <sup>3</sup> |       |
| 24   | Excavate and backfill to existing ground level | 150      | m <sup>3</sup> |       |
| 25   | Excavate and backfill to existing ground level | 150      | m <sup>3</sup> |       |
| 26   | Excavate and backfill to existing ground level | 150      | m <sup>3</sup> |       |
| 27   | Excavate and backfill to existing ground level | 150      | m <sup>3</sup> |       |
| 28   | Excavate and backfill to existing ground level | 150      | m <sup>3</sup> |       |
| 29   | Excavate and backfill to existing ground level | 150      | m <sup>3</sup> |       |
| 30   | Excavate and backfill to existing ground level | 150      | m <sup>3</sup> |       |
| 31   | Excavate and backfill to existing ground level | 150      | m <sup>3</sup> |       |
| 32   | Excavate and backfill to existing ground level | 150      | m <sup>3</sup> |       |
| 33   | Excavate and backfill to existing ground level | 150      | m <sup>3</sup> |       |
| 34   | Excavate and backfill to existing ground level | 150      | m <sup>3</sup> |       |
| 35   | Excavate and backfill to existing ground level | 150      | m <sup>3</sup> |       |
| 36   | Excavate and backfill to existing ground level | 150      | m <sup>3</sup> |       |
| 37   | Excavate and backfill to existing ground level | 150      | m <sup>3</sup> |       |
| 38   | Excavate and backfill to existing ground level | 150      | m <sup>3</sup> |       |
| 39   | Excavate and backfill to existing ground level | 150      | m <sup>3</sup> |       |
| 40   | Excavate and backfill to existing ground level | 150      | m <sup>3</sup> |       |
| 41   | Excavate and backfill to existing ground level | 150      | m <sup>3</sup> |       |
| 42   | Excavate and backfill to existing ground level | 150      | m <sup>3</sup> |       |
| 43   | Excavate and backfill to existing ground level | 150      | m <sup>3</sup> |       |
| 44   | Excavate and backfill to existing ground level | 150      | m <sup>3</sup> |       |
| 45   | Excavate and backfill to existing ground level | 150      | m <sup>3</sup> |       |
| 46   | Excavate and backfill to existing ground level | 150      | m <sup>3</sup> |       |
| 47   | Excavate and backfill to existing ground level | 150      | m <sup>3</sup> |       |
| 48   | Excavate and backfill to existing ground level | 150      | m <sup>3</sup> |       |
| 49   | Excavate and backfill to existing ground level | 150      | m <sup>3</sup> |       |
| 50   | Excavate and backfill to existing ground level | 150      | m <sup>3</sup> |       |



**KEY PLAN**  
SHEET NO. 1 OF 2

**BENCHMARK**  
BENCHMARK NO. 475-89  
ONE AND ONE HALF STORY BRICK HOUSE ON SOUTH SIDE OF DAVIS DRIVE,  
EAST OF SUTTON AND SOUTH OF EXTERIOR OF DAVIS DRIVE,  
EAST 1/2 SET HORIZONTALLY IN EAST FACE OF STONE FOUNDATION.  
ELEV. 200.175

**DEVELOPMENT STATISTICS**

|                          |                      |
|--------------------------|----------------------|
| PROPERTY AREA            | 2034m <sup>2</sup>   |
| CONVENIENCE STORE HEIGHT | 154m <sup>2</sup>    |
| LANDSCAPED AREA          | 70m <sup>2</sup>     |
| LANDSCAPED AREA          | 632.60m <sup>2</sup> |
| CANOPY HEIGHT            | 186m <sup>2</sup>    |
| PARKING SPACES REQUIRED  | 5.0m                 |
| PARKING SPACES PROVIDED  | 8                    |

**NOTES**

- ALL BARBER FREE ENTRANCES AND BARBER FREE PARTS OF TRAVEL
- THE OWNER/CONTRACTOR SHALL SUPPLY ALL ACCESSIBLE SIDING AS
- ALL CURB RAMP AS PER DCR 3.8.8.2(3)

|     |      |          |
|-----|------|----------|
| NO. | DATE | REVISION |
|     |      |          |
|     |      |          |
|     |      |          |

PROJECT NO. 114037  
DRAWN BY: K.G.K.  
DESIGN BY: K.G.K.  
CHECKED BY: P.M.L.  
DATE: JULY 2014

**D.B. Biddis & Associates Limited**  
consulting engineers and planners  
1000 SHEPPARD AVENUE EAST, SUITE 200  
SCARBOROUGH, ONTARIO M1S 1T6  
TEL: (416) 291-8888  
WWW.DBBI.COM

SCALE: 1:250  
PROJECT: PETROGOLD - NEWMARKET  
SITE PLAN

