

An aerial photograph of a suburban area. In the center, there is a large green park with a baseball field and a pond. Surrounding the park are residential streets with houses and some commercial buildings. The text '600 Stonehaven Avenue' is overlaid in large white letters at the top. At the bottom, there is a block of text providing details about a public meeting and the project name.

# 600 Stonehaven Avenue

**Public Meeting**  
**Proposed Official Plan Amendment, Zoning By-law Amendment, and Draft Plan of Subdivision**  
**Files: D09NP2004 (OPA), D14NP2004 (ZBA), D12NP2004 (DPS)**  
**October 13, 2020**

**Marianneville Stonehaven Developments Ltd.**



## 2. Subject Lands



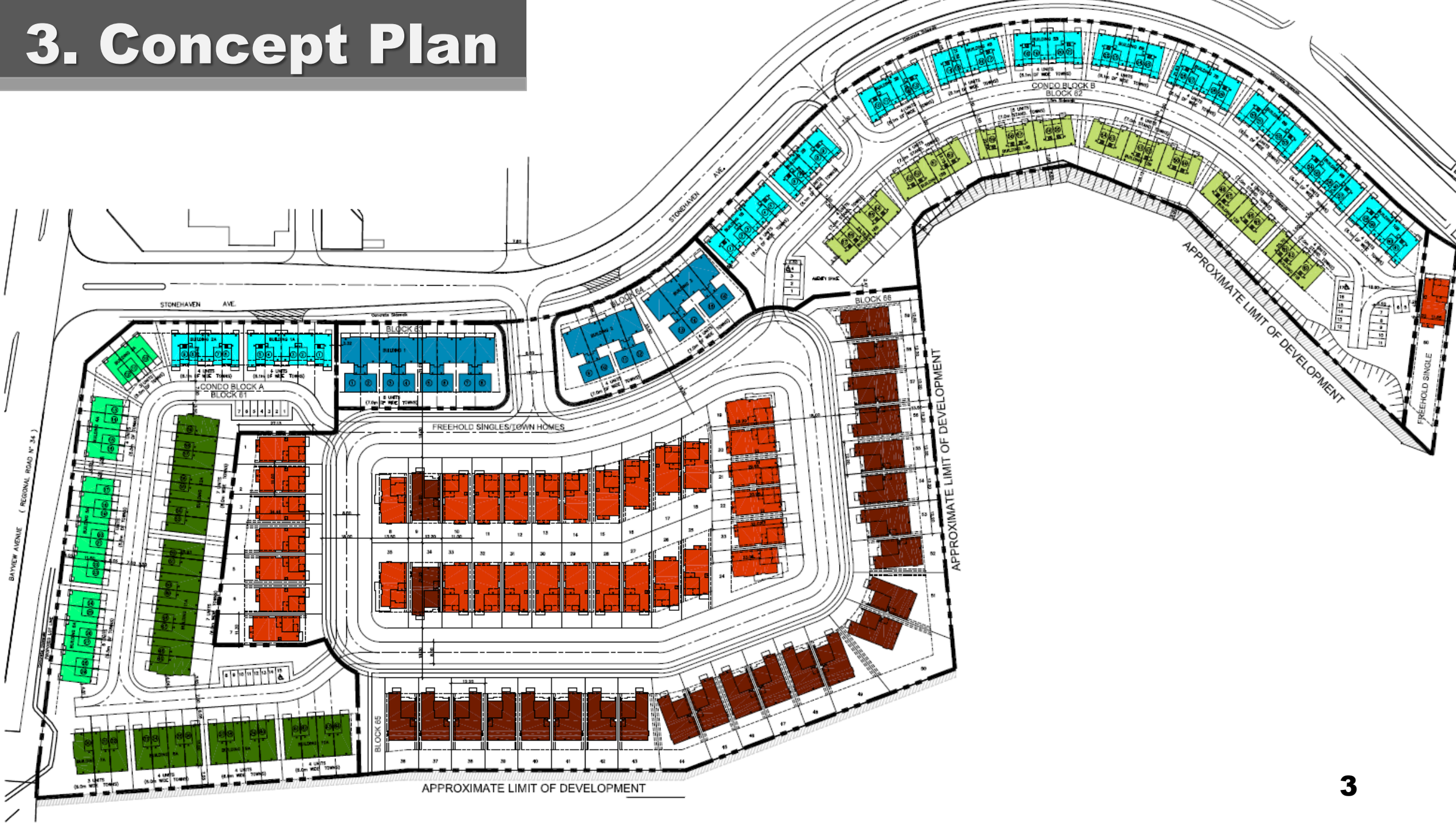
Subject Lands: +/- 7.52 ha



Retained Open Space: +/- 10.29 ha



# 3. Concept Plan



# 4. Sample Elevations

36' frontage



40' frontage



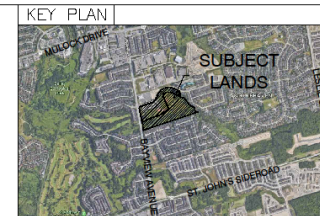
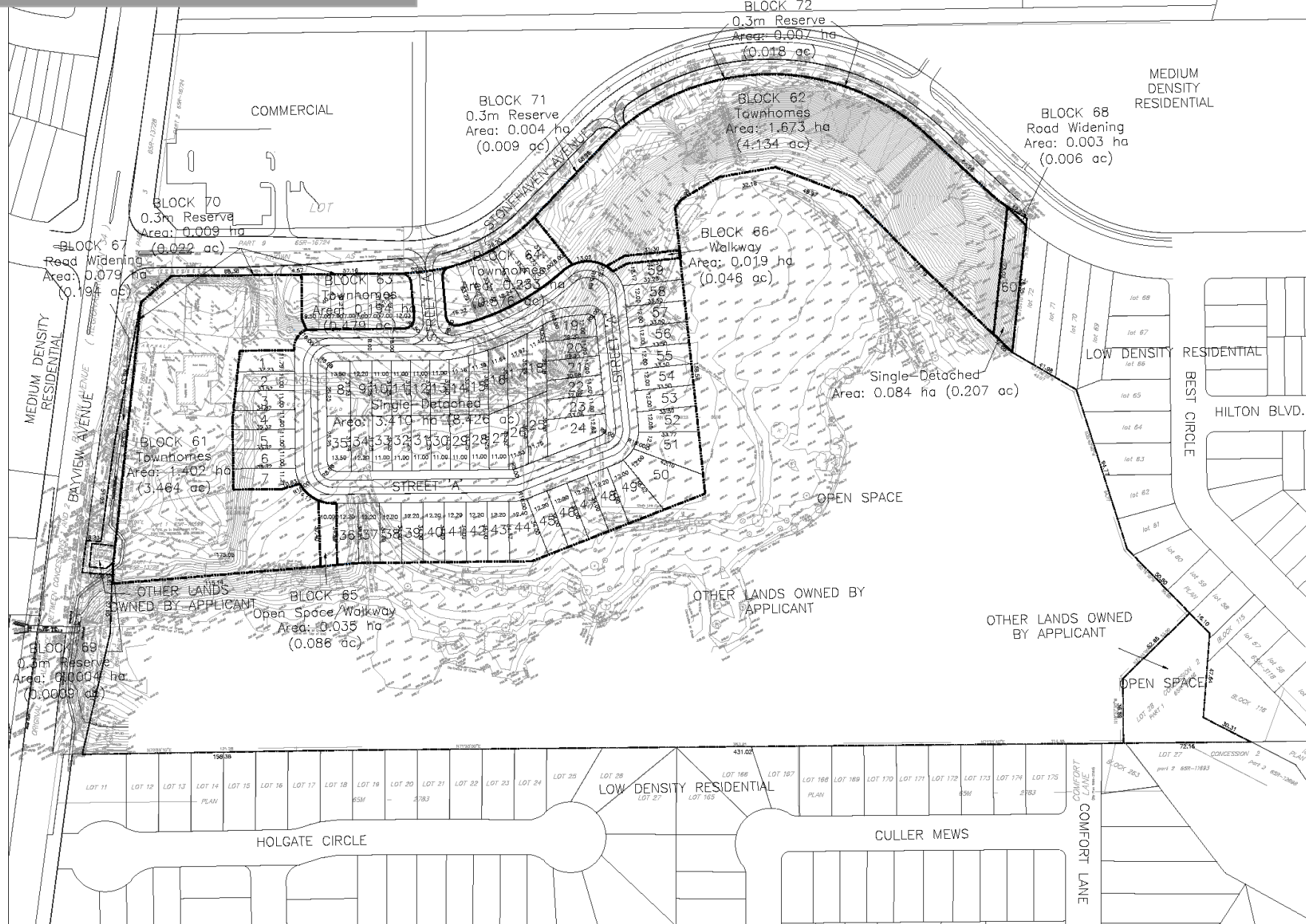


# 5. Sample Elevations - Bayview



ANDRIN HOMES  
NEWMARKET

# 6. Draft Plan



## DRAFT PLAN OF SUBDIVISION OF PART OF PART OF LOT 28 CONCESSION 2

TOWN OF NEWMARKET  
REGIONAL MUNICIPALITY OF YORK

INFORMATION REQUIRED UNDER  
SECTION 51 (17) OF THE PLANNING  
ACT

- |             |   |
|-------------|---|
| A) As shown | G) As shown                               |
| B) As shown | H) Municipal water supply available       |
| C) As shown | I) Mix of Silty Sand & Silty Clay & Silt  |
| D) As shown | J) As shown                               |
| E) As shown | K) All municipal services to be available |
| F) As shown | L) As shown                               |

### PROPOSED LAND USES AND AREAS

LAND USE	UNITS	AREA
RESIDENTIAL, SINGLE DETACHED (BLOCKS 1-60)	60	3,494 ha
RESIDENTIAL, CONDO TOWNHOUSES (BLOCKS 61 & 62)	126	3,075 ha
RESIDENTIAL, FRESHOLD TOWNHOUSES (BLOCKS 63 & 64)	16	0,427 ha
PARKLAND / OPEN SPACE / WALKWAYS (BLOCKS 65 & 66)		0,054 ha
ROAD WIDENING (BLOCKS 67 & 68)		0,082 ha
RESERVES (BLOCKS 69-72)		0,003 ha

TOTAL 202 7,152 ha

### OWNER'S CERTIFICATE

MARINNEVILLE STONEHAVEN DEVELOPMENTS LIMITED  
HEREBY CONSENTS TO THE FILING OF THIS PLAN IN DRAFT  
FORM

MARINNEVILLE STONEHAVEN DEVELOPMENTS LTD., OWNER

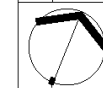
### SURVEYOR'S CERTIFICATE

I HEREBY CERTIFY THAT THE BOUNDARIES OF THE LAND  
TO BE SUBDIVIDED AND THEIR RELATIONSHIP TO THE  
ADJACENT LANDS ARE ACCURATELY SHOWN ON THIS PLAN.

Greg G. Robinson, ONTARIO LAND SURVEYOR  
for J.D. BARNES LTD.

NO. REVISION DATE INITIAL

NO.	REVISION	DATE	INITIAL



**ZELINKA PRIAMO LTD.**  
A Professional Planning Practice

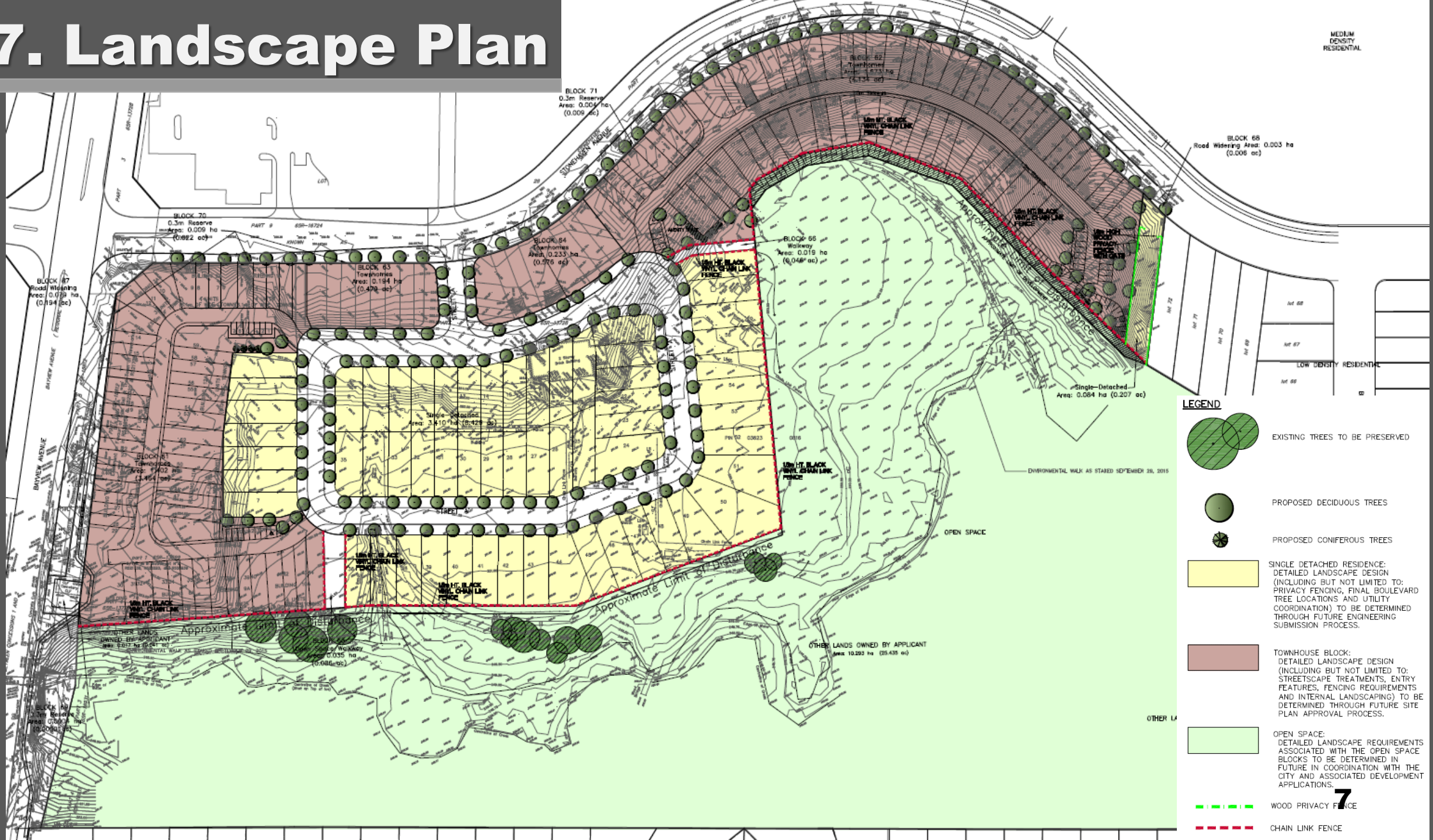
318 Wellington Road, London, Ontario N6C 4P4  
Tel: (519) 474-7137 Fax: (519) 474-2284 e-mail: zp@zplan.com

DRAWN BY: KMC PROJECT NO: MVL/NMK/10-01

DATE: OCTOBER 2019 SCALE: 1:1,000

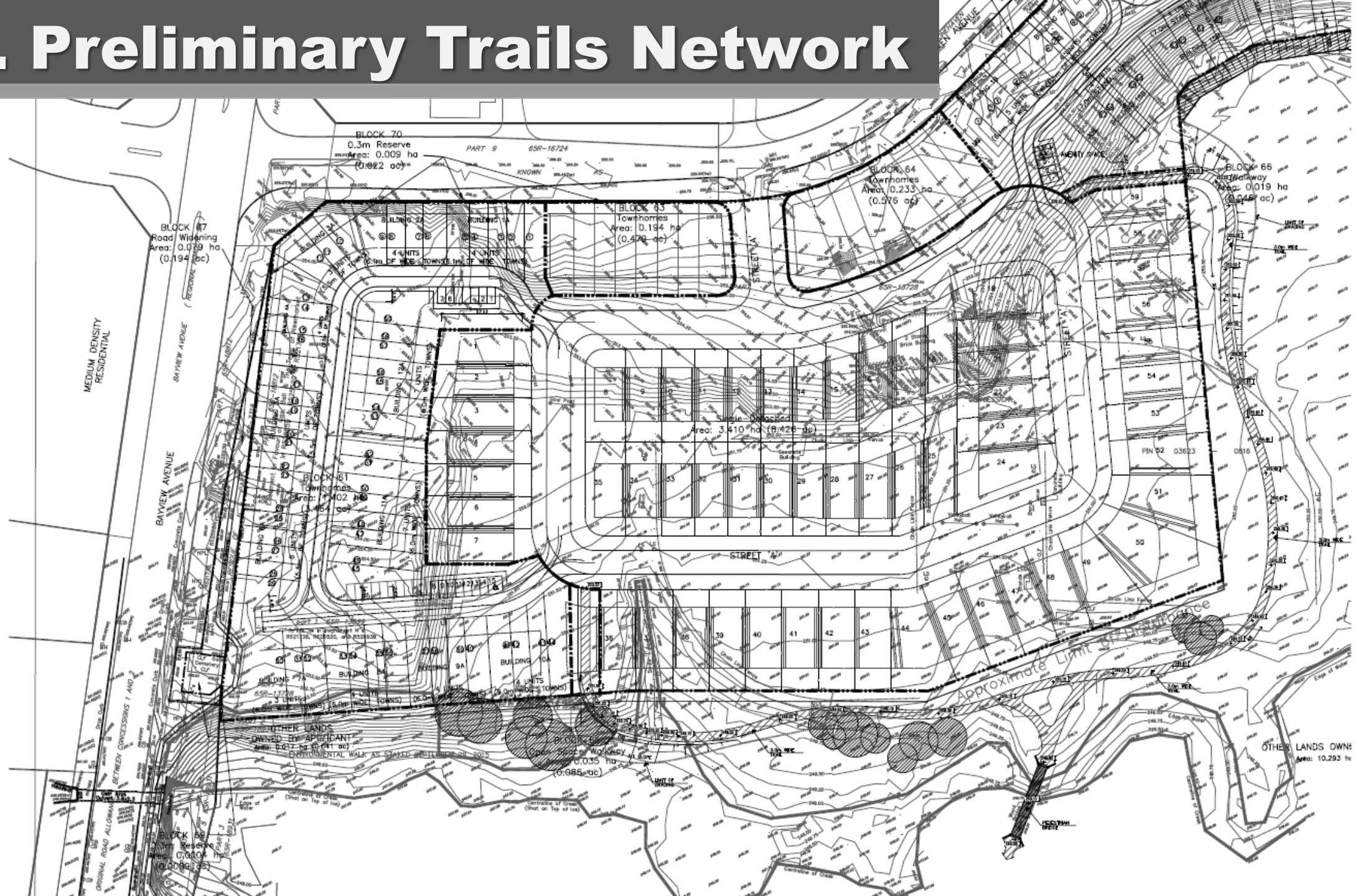


## 7. Landscape Plan



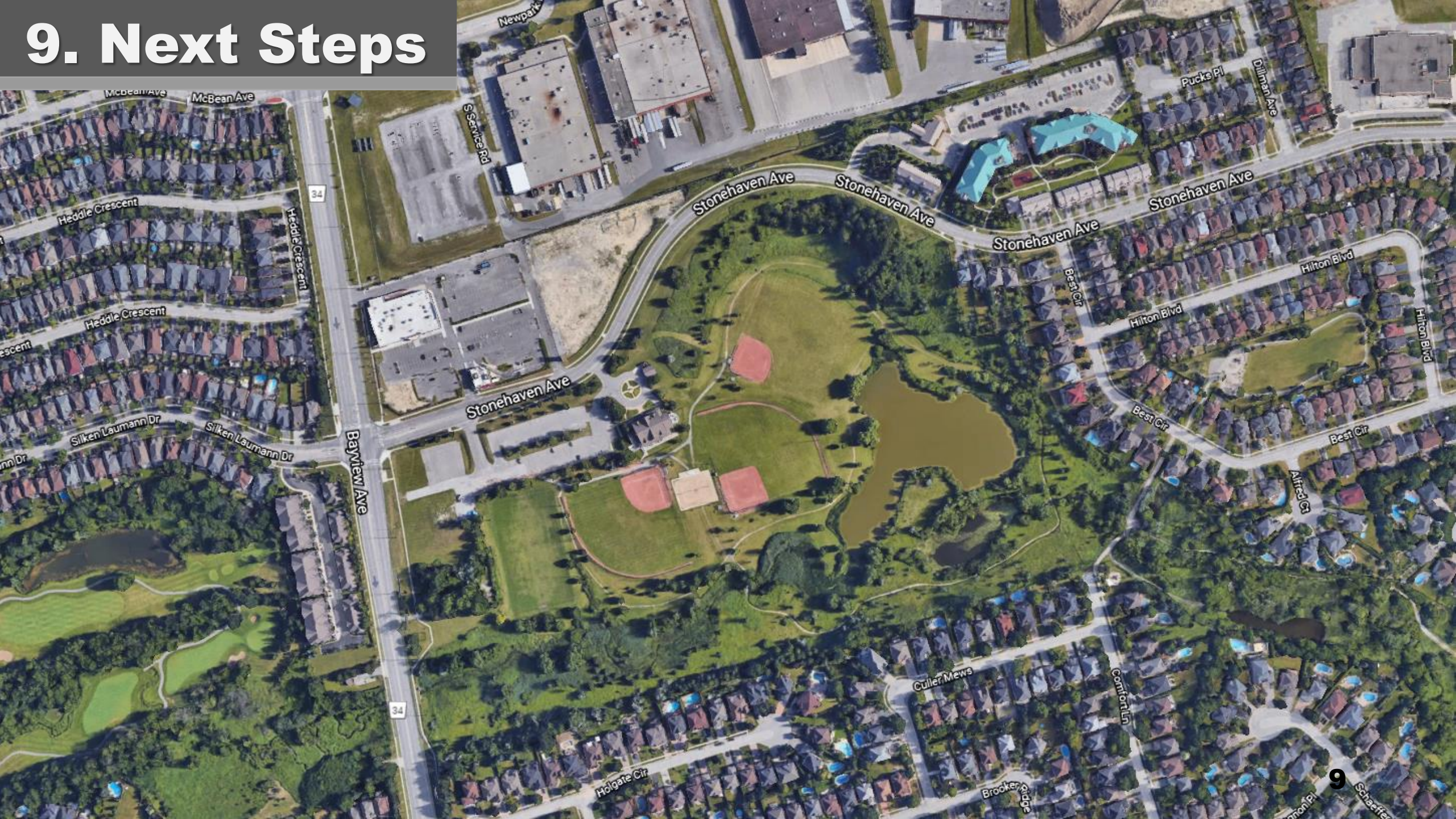


## 8. Preliminary Trails Network



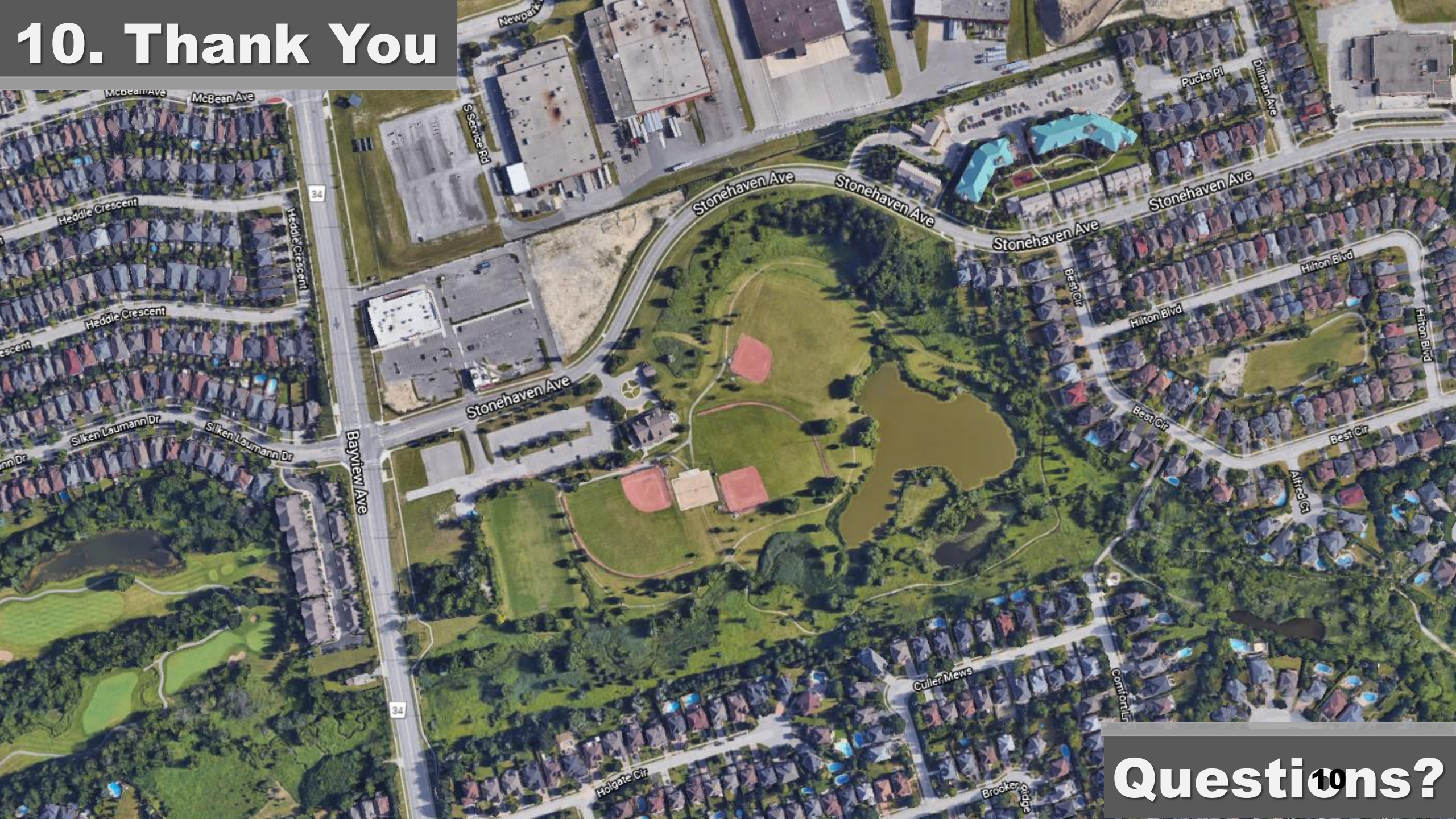


# 9. Next Steps





# 10. Thank You



# Questions?