

**ENGINEERING SERVICES****Town of Newmarket**

395 Mulock Drive

P.O. Box 328, STN Main

Newmarket, ON L3Y 4X7

www.newmarket.ca

engineering@newmarket.ca

T: 905 895.5193

F: 905 953 5138

May 12, 2015**DEVELOPMENT & INFRASTRUCTURE SERVICES REPORT
ENGINEERING SERVICES 2015-33**

TO: Committee of the Whole

SUBJECT: Silken Laumann Drive – Parking Restrictions
File No.: T.08 T.30 Silken Laumann

ORIGIN: Director, Engineering Services

RECOMMENDATIONS

THAT Development and Infrastructure Services Report – ES 2015-33 dated May 12, 2015 regarding “Silken Laumann Drive – Parking Restrictions” be received and the following recommendation be adopted:

THAT the existing parking restrictions on Silken Laumann Drive remain as they are.

COMMENTS

Through the Ward Councillor, Engineering Services received a request from a resident on Silken Laumann Drive just west of Bayview Avenue asking the Town to remove parking restrictions on the south side to allow more on-street parking. Engineering Services undertook the process outlined in the Corporate Parking Policy by contacting the community for feedback. It was concluded that the majority of residents on Silken Laumann Drive (from household numbers #463, and #466 eastward to Bayview Avenue) are against any changes to the current existing parking regulations. Several residents expressed a concern that changing the existing parking restrictions would result in safety issues in this curved section of Silken Laumann Drive. In fact, this safety concern was the original reason why the existing parking restrictions were implemented.

Therefore, it is recommended that there be no changes to the existing parking restrictions on Silken Laumann Drive at this time.

PUBLIC CONSULTATION

A letter was sent to a total of 25 households in the Silken Laumann community (from #463 to #519 and #466 to #508) on March 26, 2015 to solicit their comments on the proposed changes to the parking restrictions. Out of the households contacted, four (4) were against any changes, and one (1) did not indicate that they were either for or against, but expressed some concerns about any changes.

A copy of this report will be forwarded to affected residents prior to the Committee of the Whole Meeting so that residents may attend the meeting or present a deputation if they so wish.

BUSINESS PLAN AND STRATEGIC PLAN LINKAGES

- Well-planned and connected...strategically planning for the future to improve information access and enhance travel to, from and within Newmarket.

HUMAN RESOURCE CONSIDERATIONS

No impact on current staffing levels.

IMPACT ON BUDGET

Operating Budget (Current and Future)

No impact on the Operating Budget.

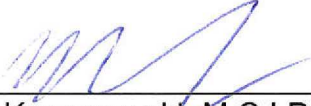
Capital Budget


No impact on the Capital Budget.

CONTACT

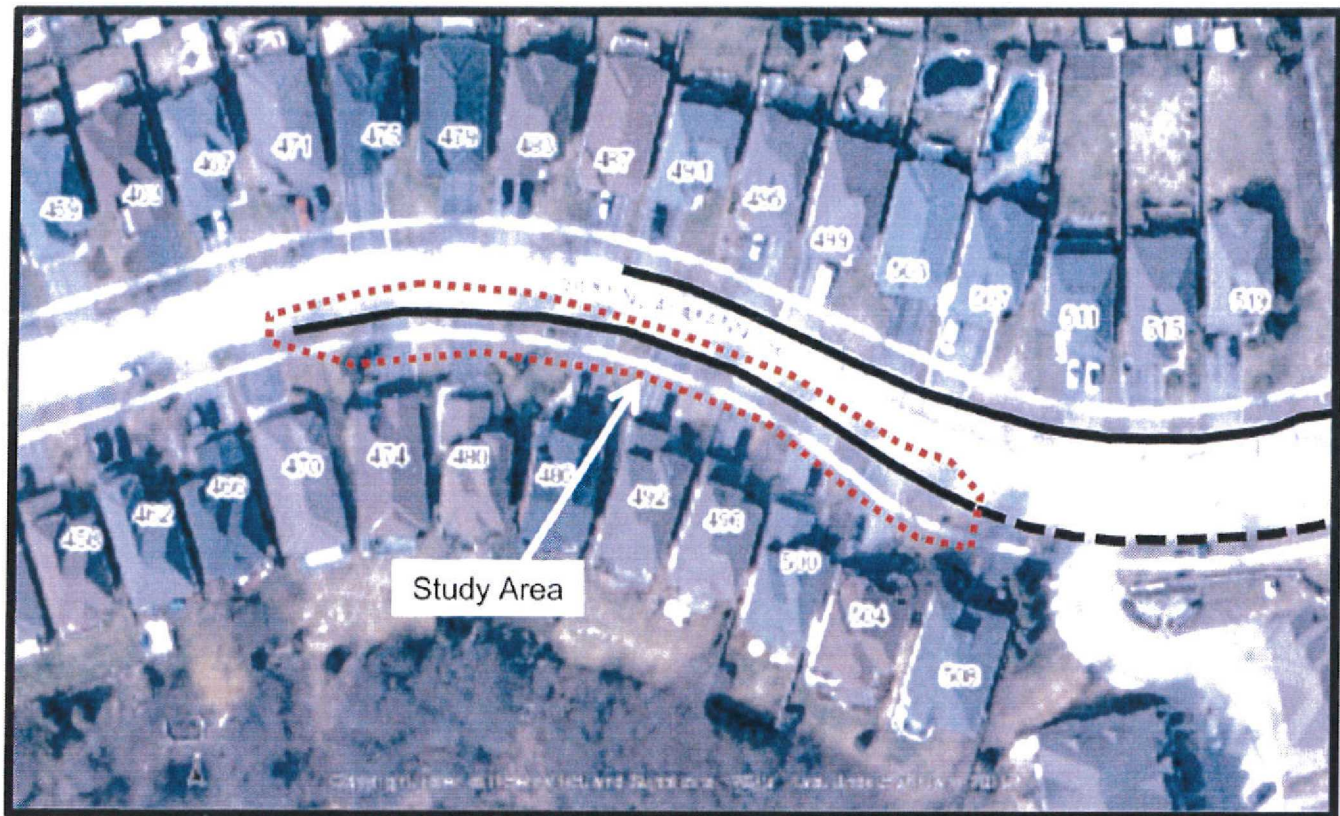
For more information on this report, please contact Mark Kryzanowski at 905-895-5193 extension 2508; mkryzanowski@newmarket.ca.

Prepared by:


M. Kryzanowski, M.C.I.P., R.P.P.
Senior Transportation Coordinator


R. Prudhomme, M.Sc., P.Eng.
Director, Engineering Services


P. Noehammer, P.Eng., Commissioner
Development & Infrastructure Services



- Existing NO Parking Zone
- - - - Existing NO Stopping Zone