

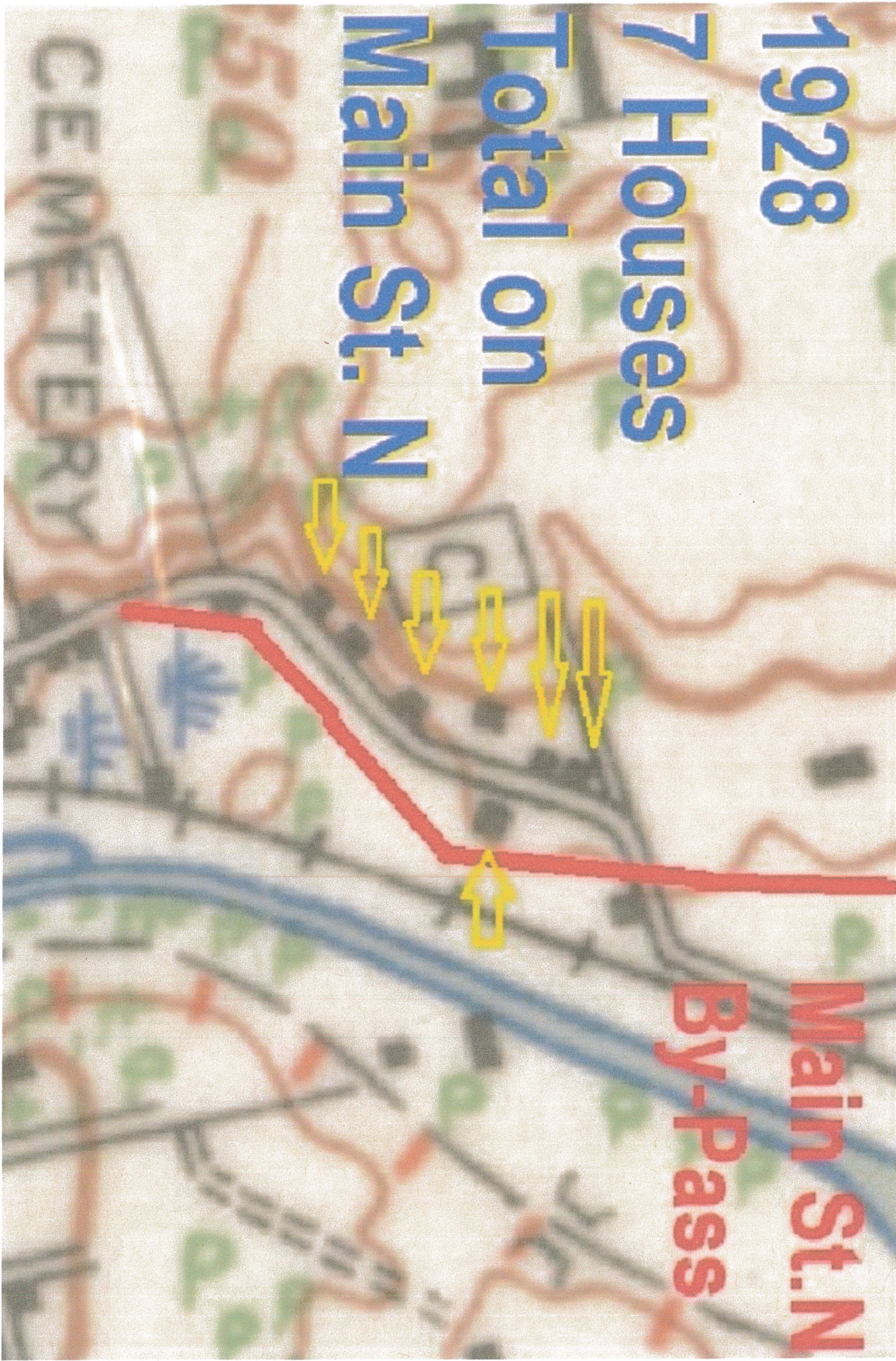
Main St. North Tertiary Plan

Natural Heritage Background Information for Council & Staff

Provided by the Land Owners / Residents' of:

218, 226, 228, 238 & 241 Main St. N
Newmarket, ON

Of the 25 properties (24 houses) that are in the study area today, only 7 existed in 1928.



Key

Main St. N. By-Pass

Lot Lines (1954)

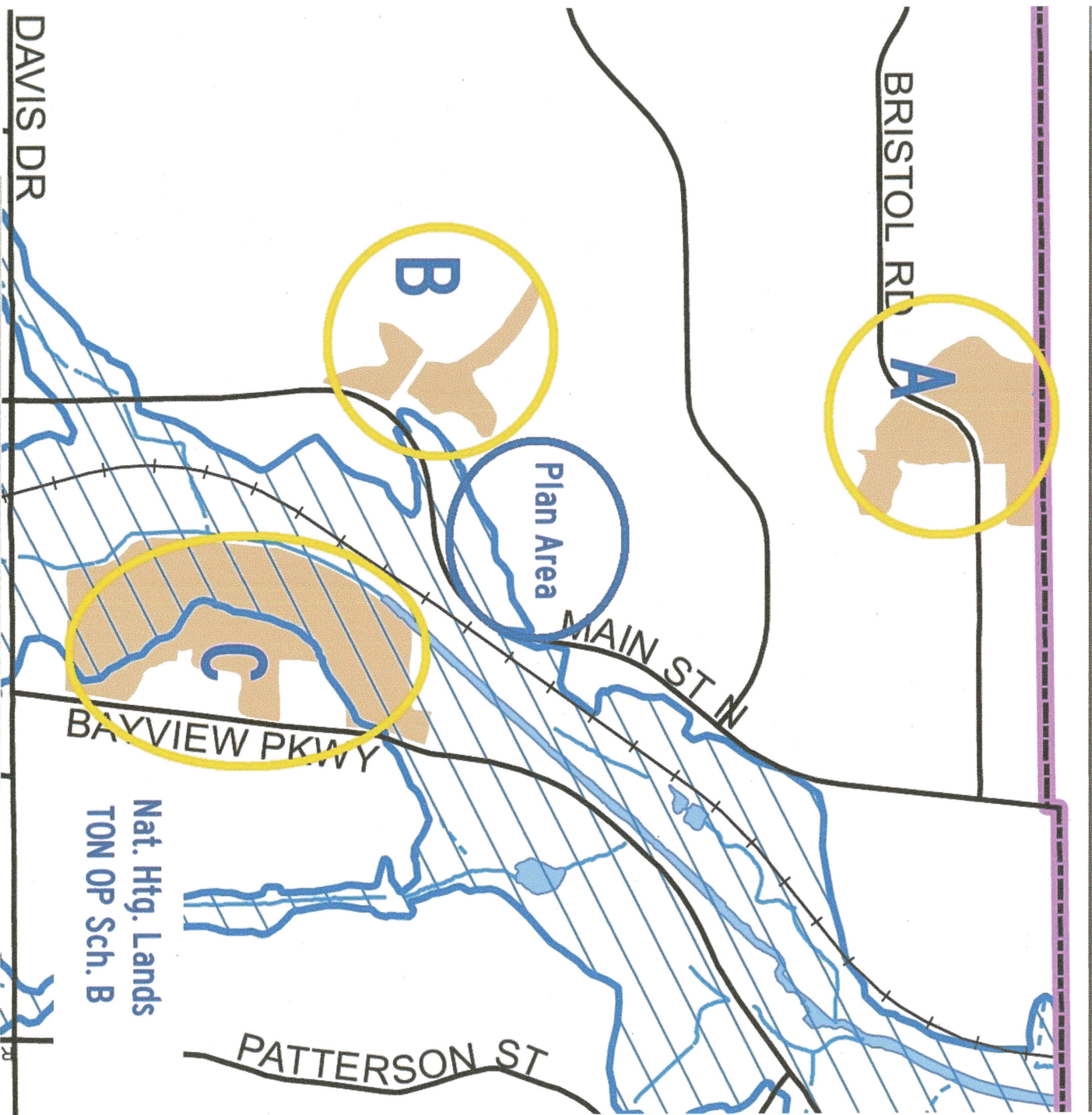
Infill Lots Created After 1954

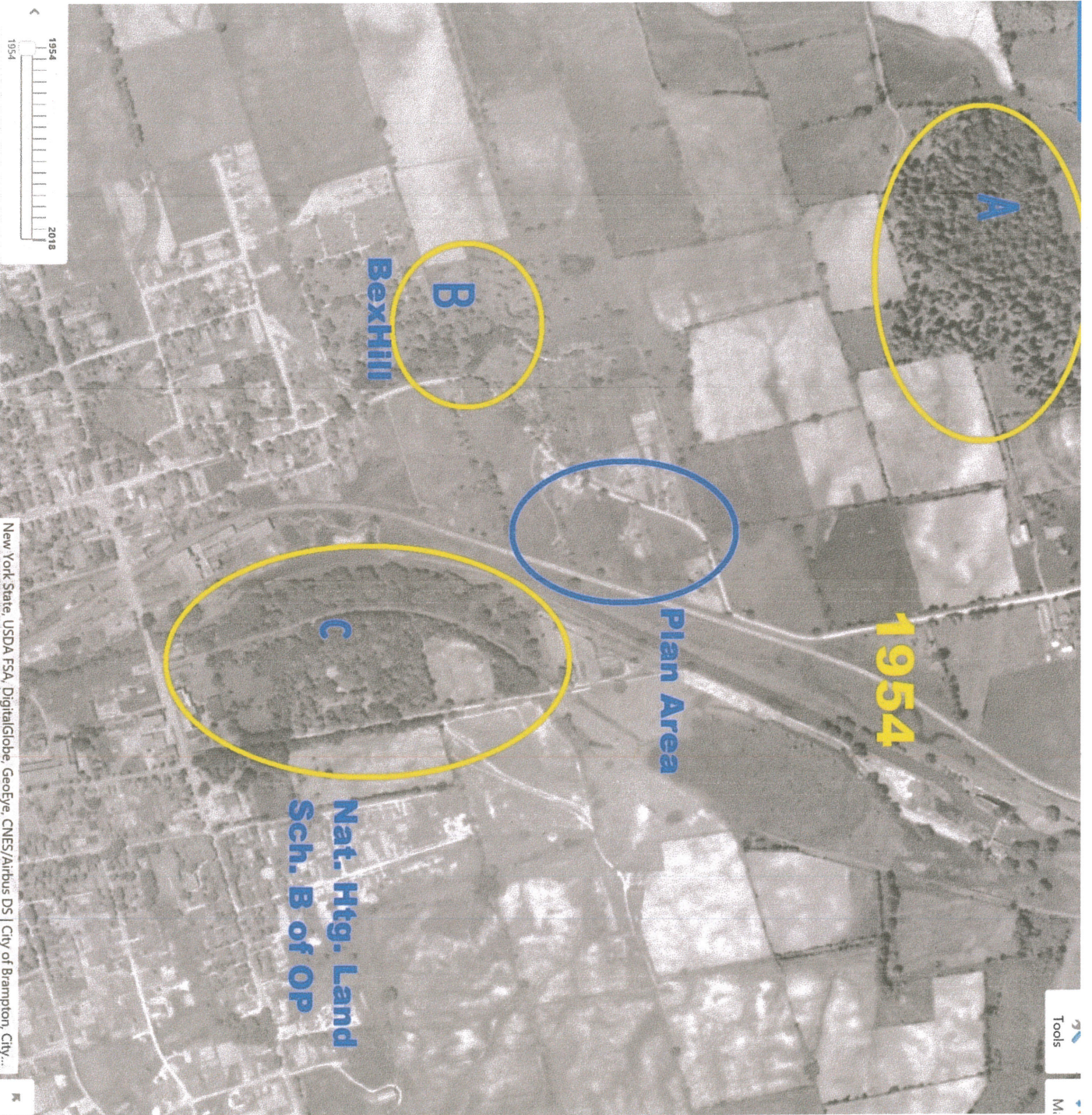
Cath.
Cem.

Nmkt.
Cem.

**By 1954 only 12
houses existed on
the street.**







1954

Nat Htg Lands
TON OP Sch B



1954

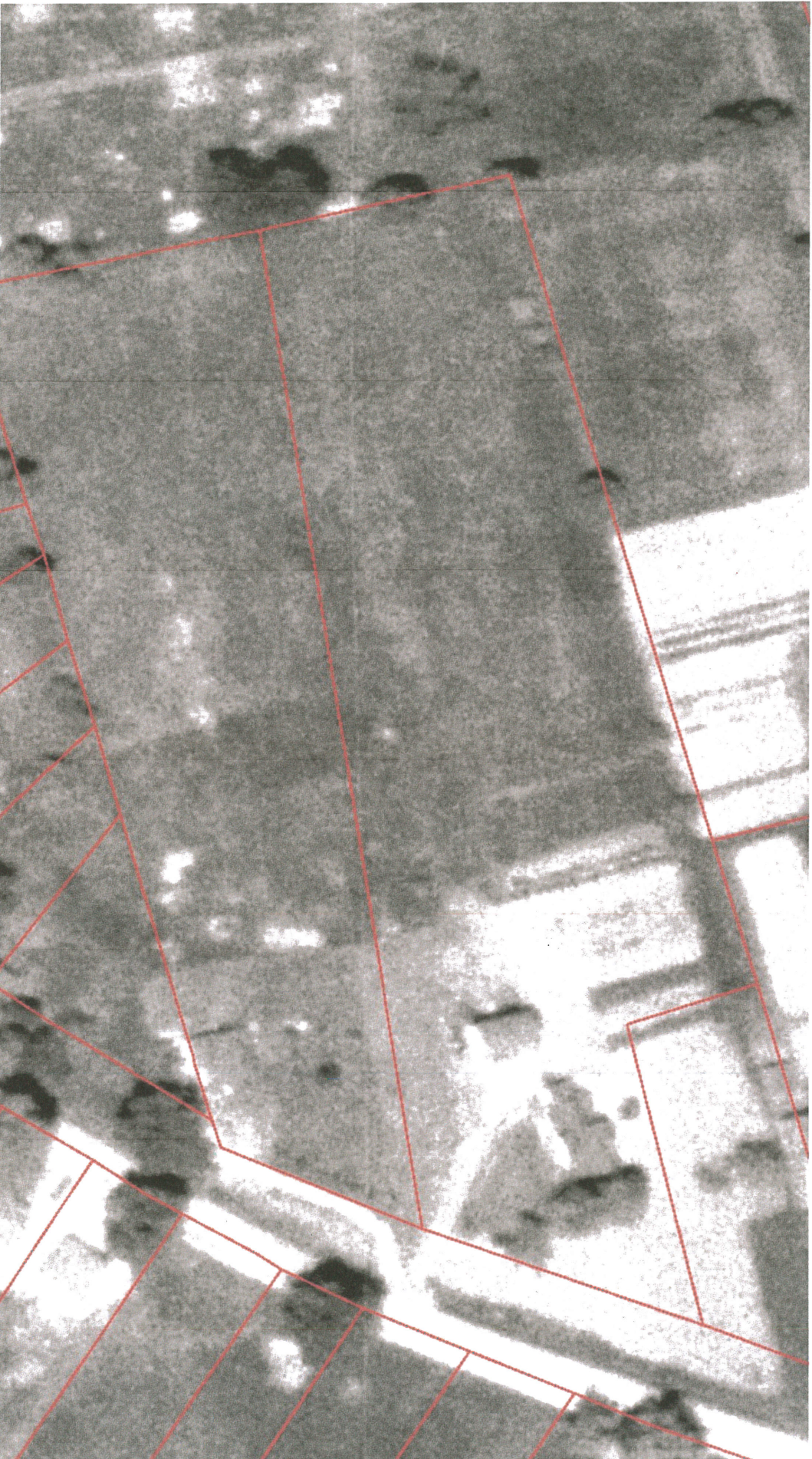


Very few trees remain from before the area was settled.

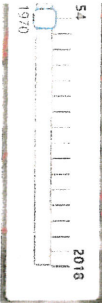
The few wooded areas that have survived were identified and protected in the TON Official Plan.

The center and north end of the street are not in or adjacent to any Nat Htg lands.

1954



1970



1970

Christmas Trees Planted as a Cash Crop.

2018

1978



New York State, DigitalGlobe | City of Brampton, City of Toronto, County of Simcoe, York Region, Province of C

By now, people have started to planted trees on their own property, maintained them, at their own expense.

The trees were planted as “private property”, on private land, for their own specific purposes.

Other properties still have no trees at all (still farm land).

2002



2017





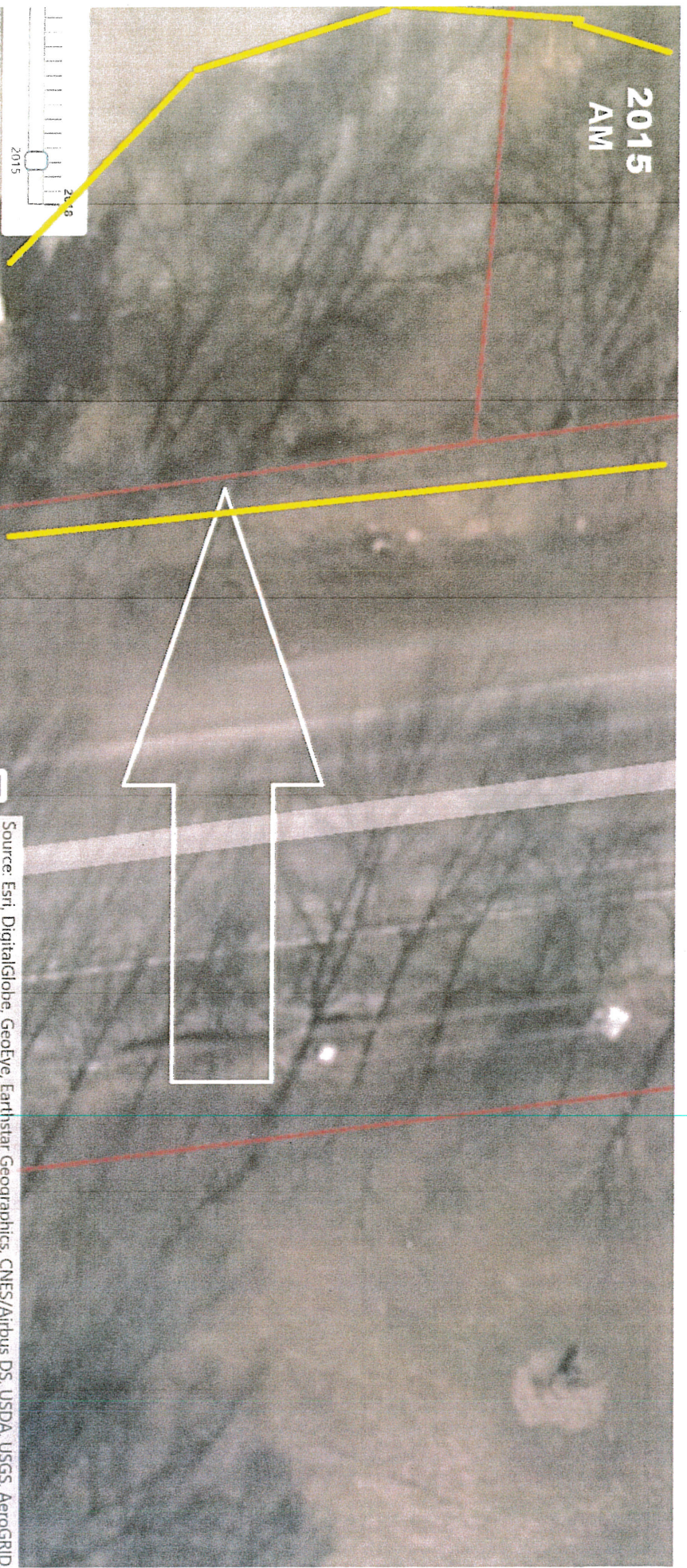
As seen in 1978, No Trees or any other "Natural Heritage Features" exist. How is the significant loss of usable land area being justified and what compensation is being planned for the land owners who will be financially affected?

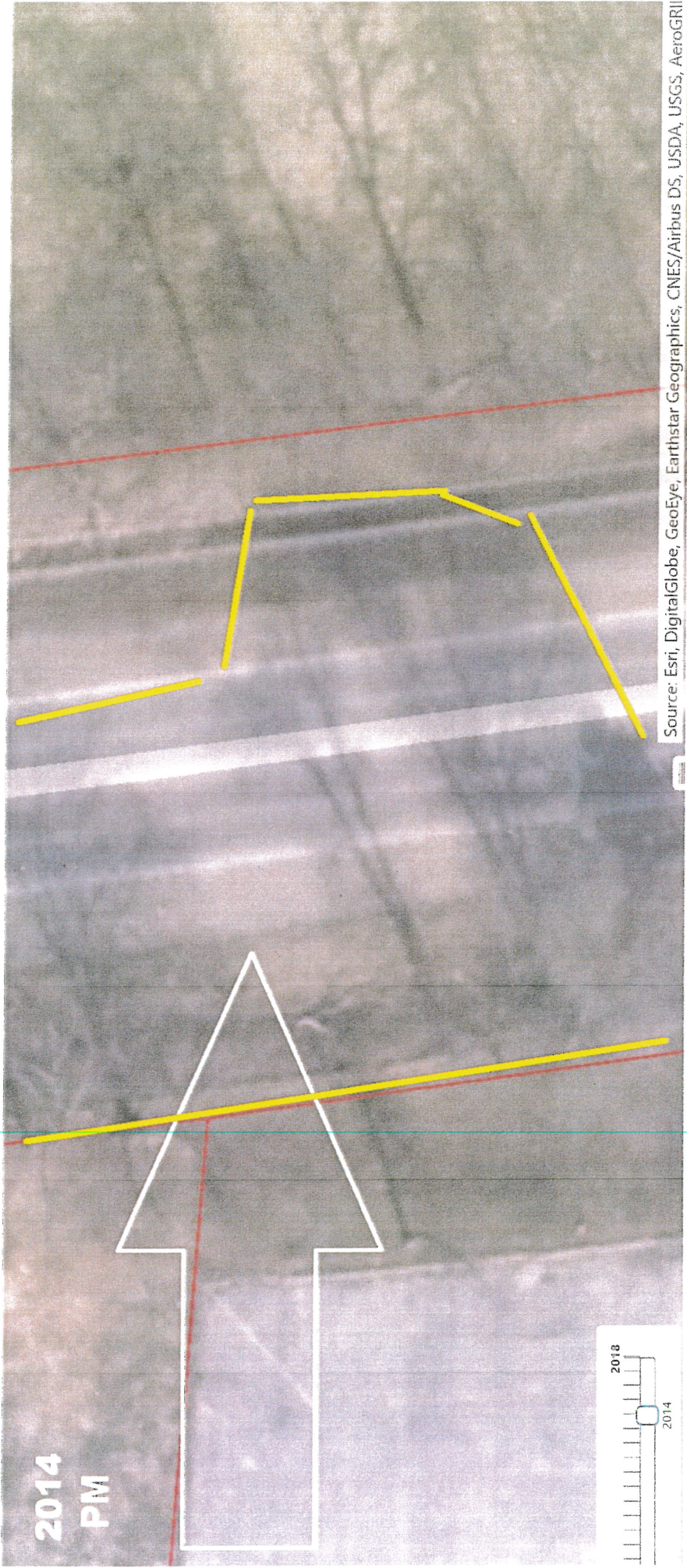


In a meeting with Town Staff, they stated that the nat. htg. features were determined by using aerial photographs.

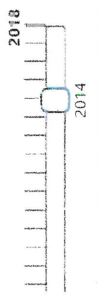
Aerial photos do not provide the accuracy needed to determine actual nat. htg. features. Depending on the time of day the photo was taken, the perceived area looks much different.

The 2014 vs 2015 photos illustrate why this is not an accurate or scientific method of attaining nat. htg. data.





2014
PM



Source: Esri, DigitalGlobe, GeoEye, Earthstar Geographics, CNES/Airbus DS, USDA, USGS, AeroGRII

1954

**Actual Nat Htg lands that
have been developed,
now provide extensive
canopy cover.**



Tools

Maps +

1978



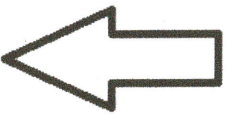
TODAY

Actual Nat Htg lands that
have been developed,
now provide extensive
canopy cover.

Tools

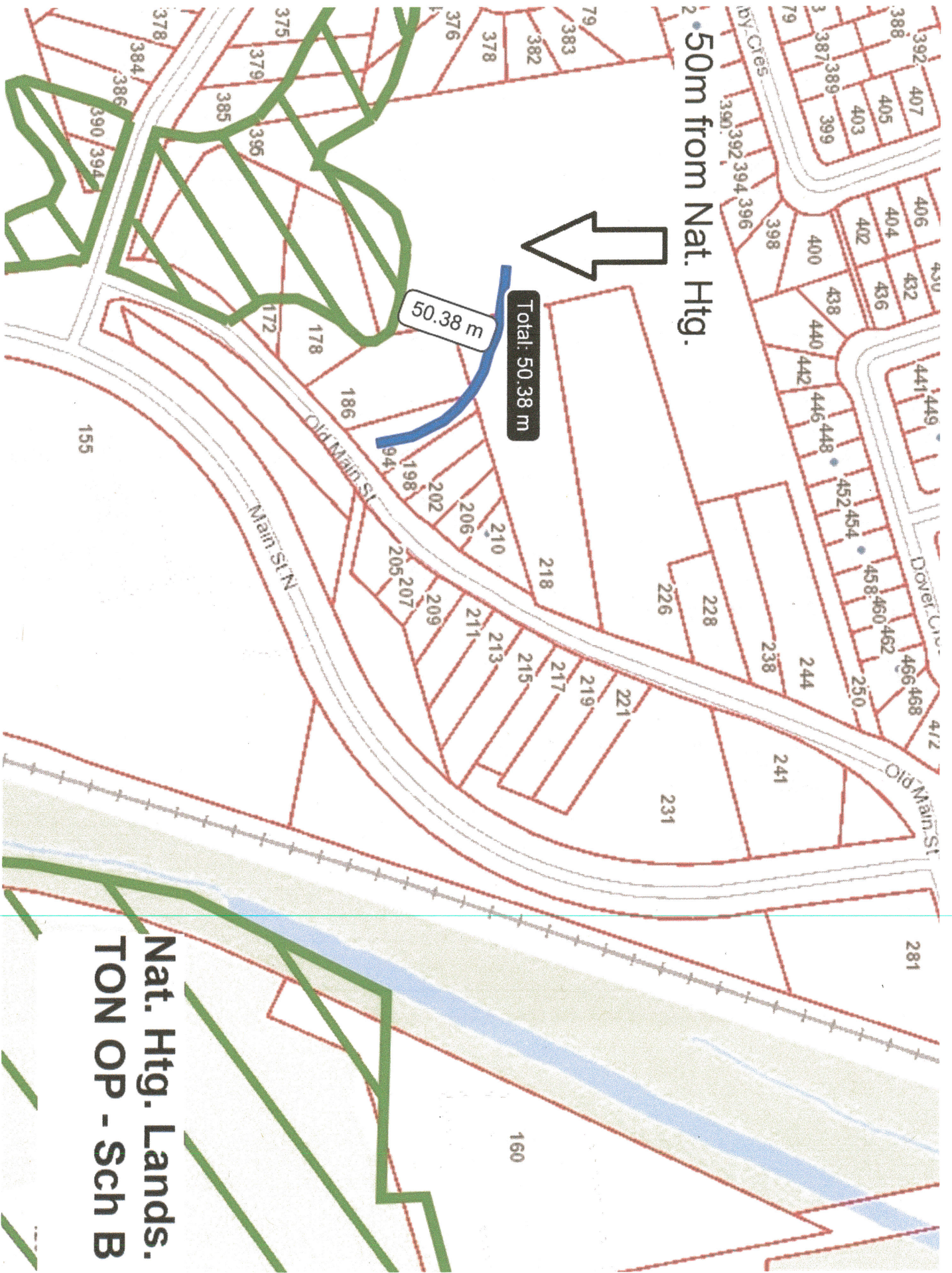
Maps +

2 • 50m from Nat. Htg.

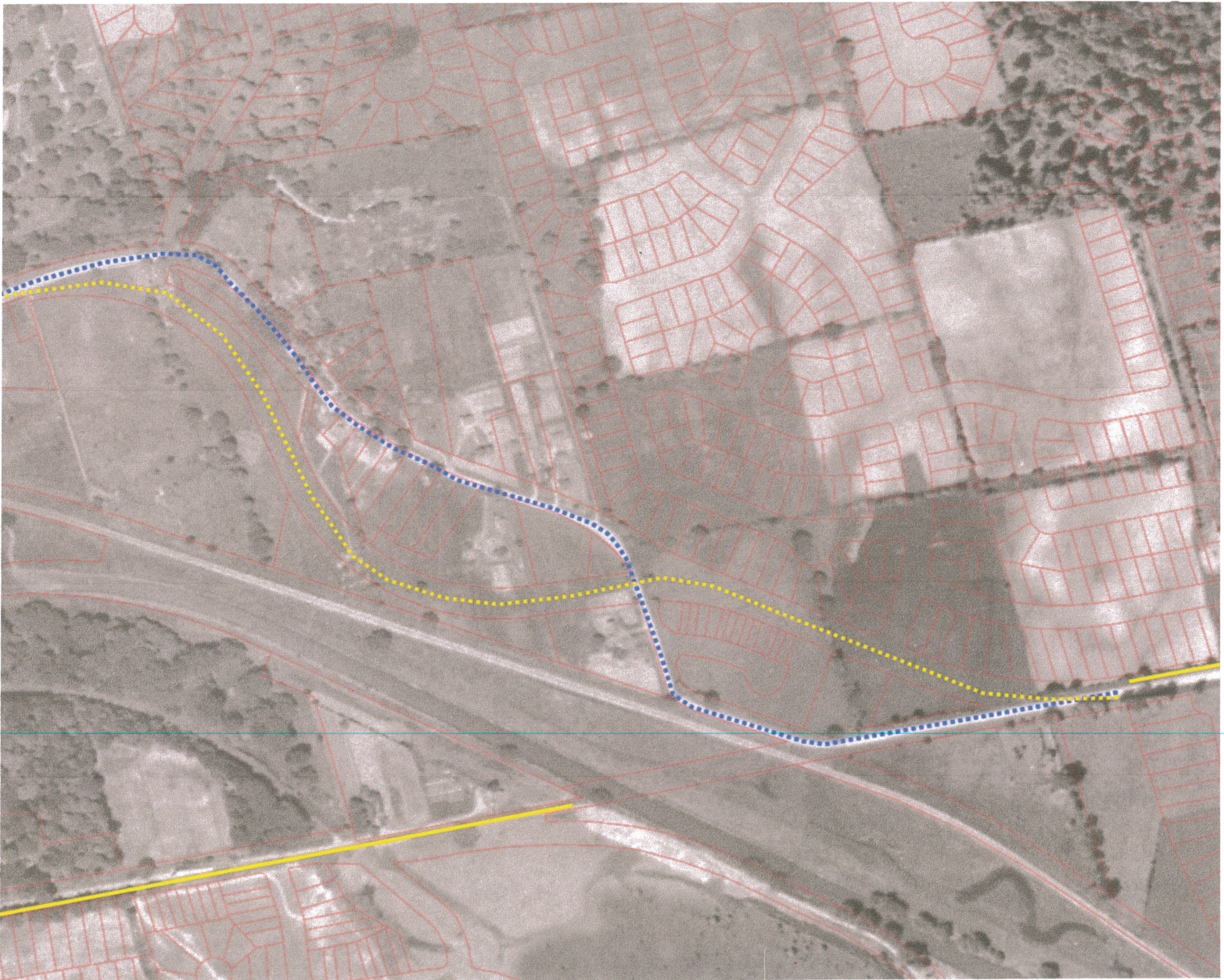


Total: 50.38 m

50.38 m



Nat. Htg. Lands.
TON OP - Sch B



Possible Compromise

